

Society for Immunotherapy of Cancer (SITC)

Basic Principles of Tumor Immunotherapy

Satiro De Oliveira, M.D.

Mattel Children's Hospital at UCLA
Jonsson Comprehensive Cancer Center

Advances in Cancer Immunotherapy™ - Los Angeles
June 19, 2015



Society for Immunotherapy of Cancer

Outline

1. *Immunosurveillance and Immunoediting*
2. *Tumor-associated antigens*
3. *Cancer Immunity Cycle*
4. *Immunotherapy approaches*
5. *Take Home Messages*

Outline

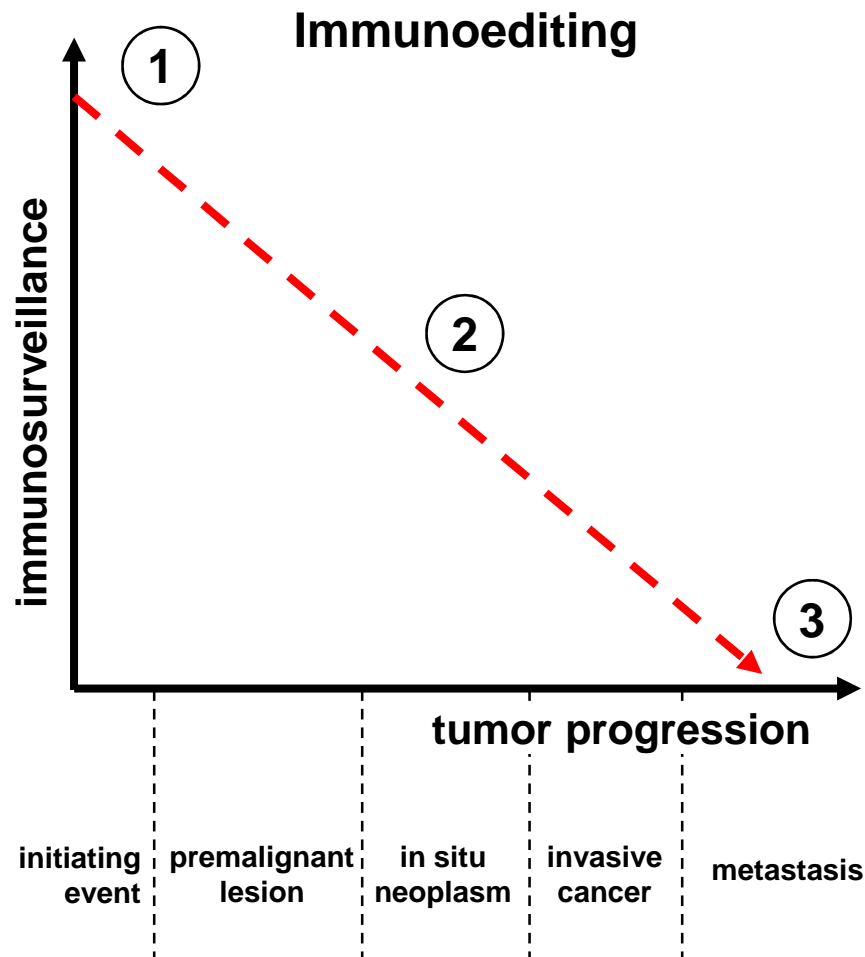
1. *Immunosurveillance and Immunoediting*
2. *Tumor-associated antigens*
3. *Cancer Immunity Cycle*
4. *Immunotherapy approaches*
5. *Take Home Messages*

Immunosurveillance and Immunotherapy

- The cancer Immunosurveillance hypothesis: initial concept in 1909
- Burnet & Thomas, 1957: lymphocytes acting as sentinels in recognizing and eliminating continuously emerging transformed cells.

Immunoediting: changes in the immunogenicity of tumors due to the anti-tumor response of the immune system, resulting in the emergence of immune-resistant variants.

Immunosurveillance and Immunotherapy ^{2/3}



1.Elimination: immune system recognizes and destroys potential tumor cells.

2.Equilibrium: elimination not complete successful, and tumor undergoes changes that aid survival facing selection pressure by the immune system

3.Escape: tumor cells accumulated sufficient mutations to escape the immune system, growing to become clinically detectable

Immunosurveillance and Immunotherapy

- **Immunotherapy:** “treatment of disease by inducing, enhancing, or suppressing an immune response”
- to harness and augment antitumor responses to treat cancer more effectively

❑ **Passive immunotherapy:**

- does not engage adaptive immune response
- fast-acting
- transient
- cytokines, monoclonal antibodies, adoptive T cells

❑ **Active immunotherapy:**

- engages adaptive immune response
- delayed onset
- life-long generation of immunological memory
- cancer vaccines

Outline

1. *Immunosurveillance and Immunoediting*
2. ***Tumor-associated antigens***
3. *Cancer Immunity Cycle*
4. *Immunotherapy approaches*
5. *Take Home Messages*

How the Immune System Recognizes and Eradicates Cancer

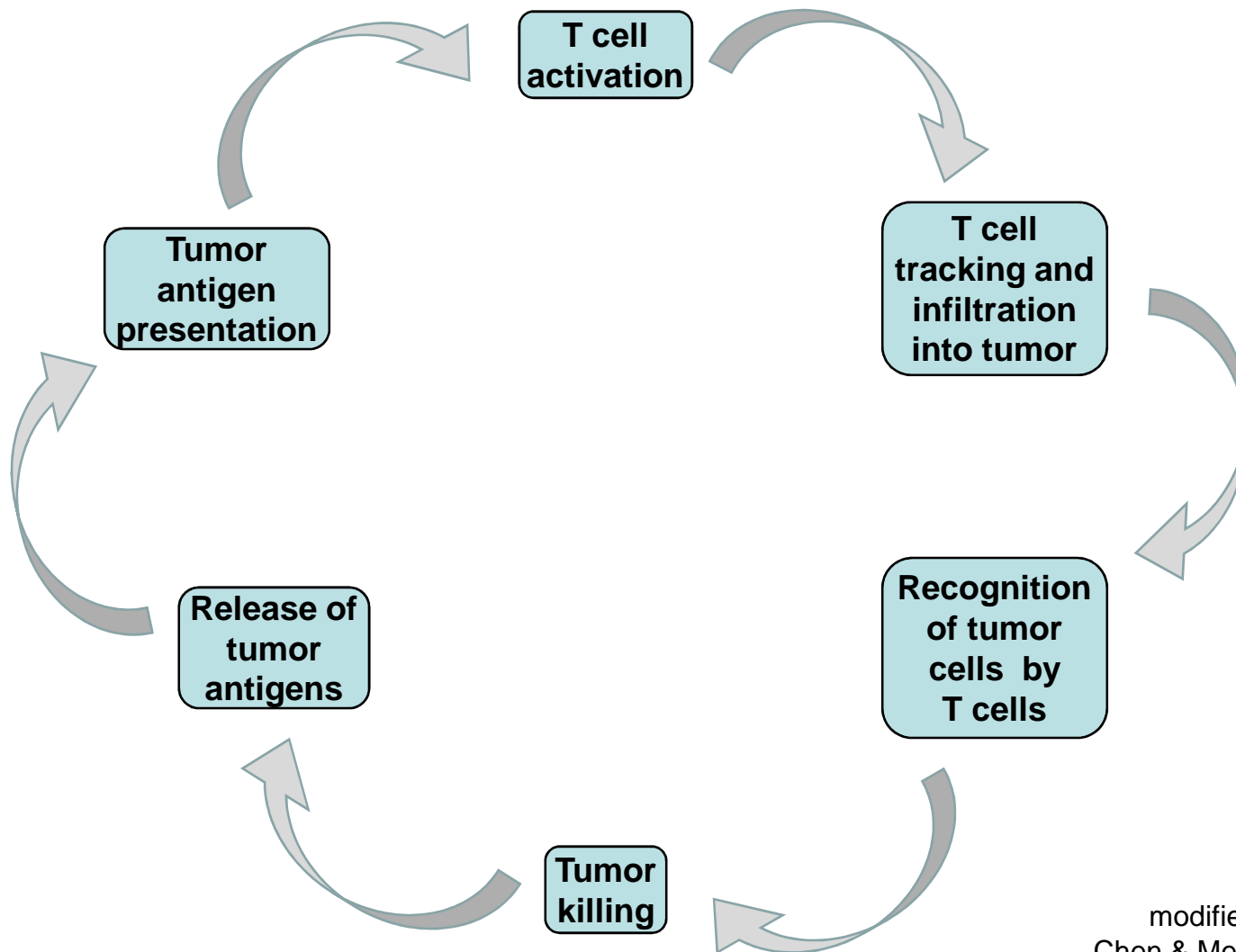
Tumor-associated antigens (TAA): targets of a tumor-specific T-cell response that rejects the tumor; immunization with irradiated tumor cells protects from challenge with live cells from the same tumor.

1. Tumor-specific Ag: mutated molecules (CDK4 and β -catenin)
2. Cancer-testis Ag: expressed only in germ cells in testis (NY-ESO, MAGE-3)
3. Differentiation Ag: expressed only in particular tissues (tyrosinase, CD19)
4. Abnormal tumor expression Ag: overexpression in tumor cells compared to normal counterparts (HER-2/neu, WT1)
5. Abnormal post-translational modification Ag (underglycosylated MUC-1)
6. Abnormal post-transcriptional modification: novel proteins generated when introns are retained in the mRNA (GP100)
7. Oncoviral protein Ag: viral proteins expressed in virus-associated tumors (HPV type 16, E6 and E7 proteins)

Outline

1. *Immunosurveillance and Immunoediting*
2. *Tumor-associated antigens*
3. ***Cancer Immunity Cycle***
4. *Immunotherapy approaches*
5. *Take Home Messages*

The cancer immunity cycle

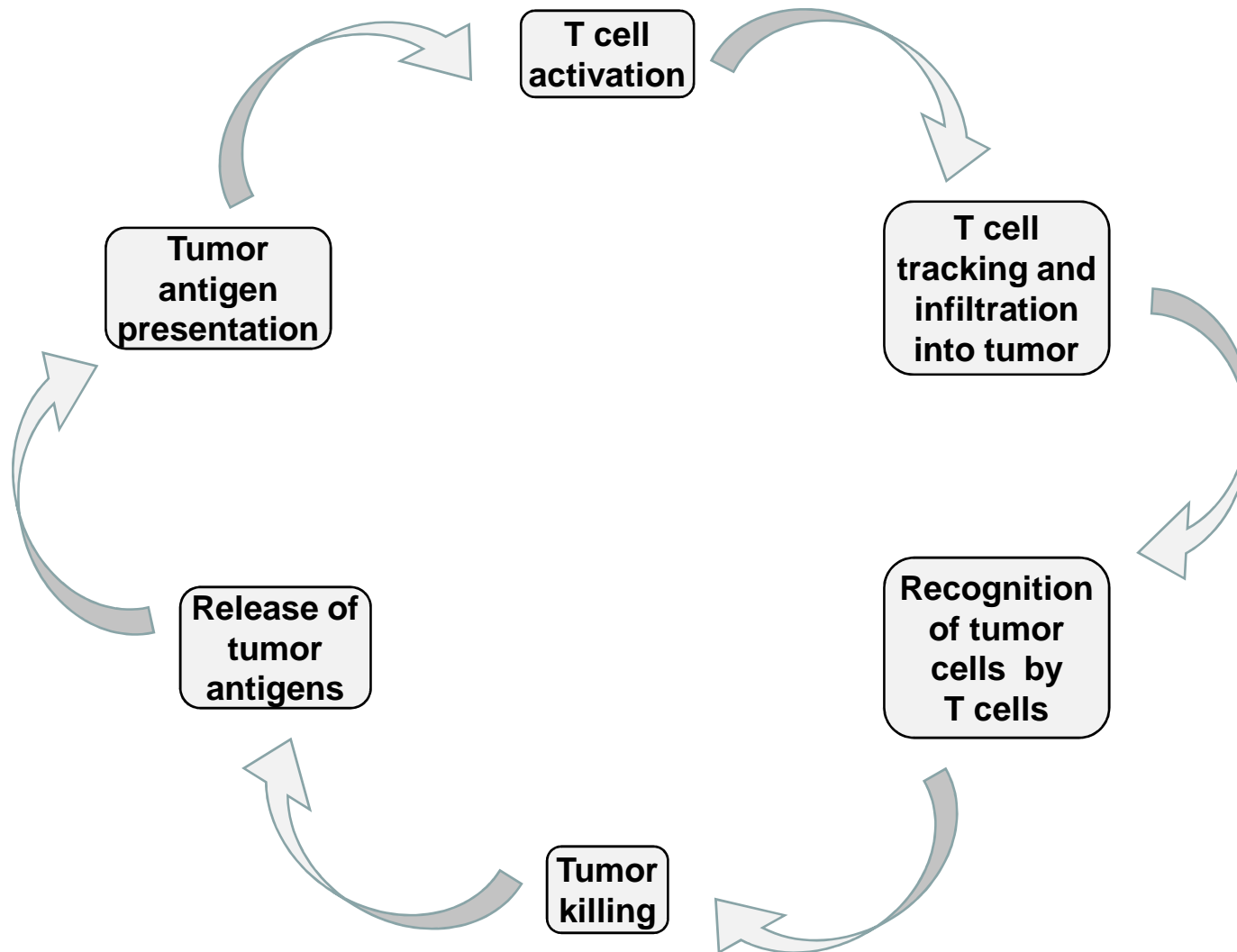


modified from
Chen & Mellman, 2013

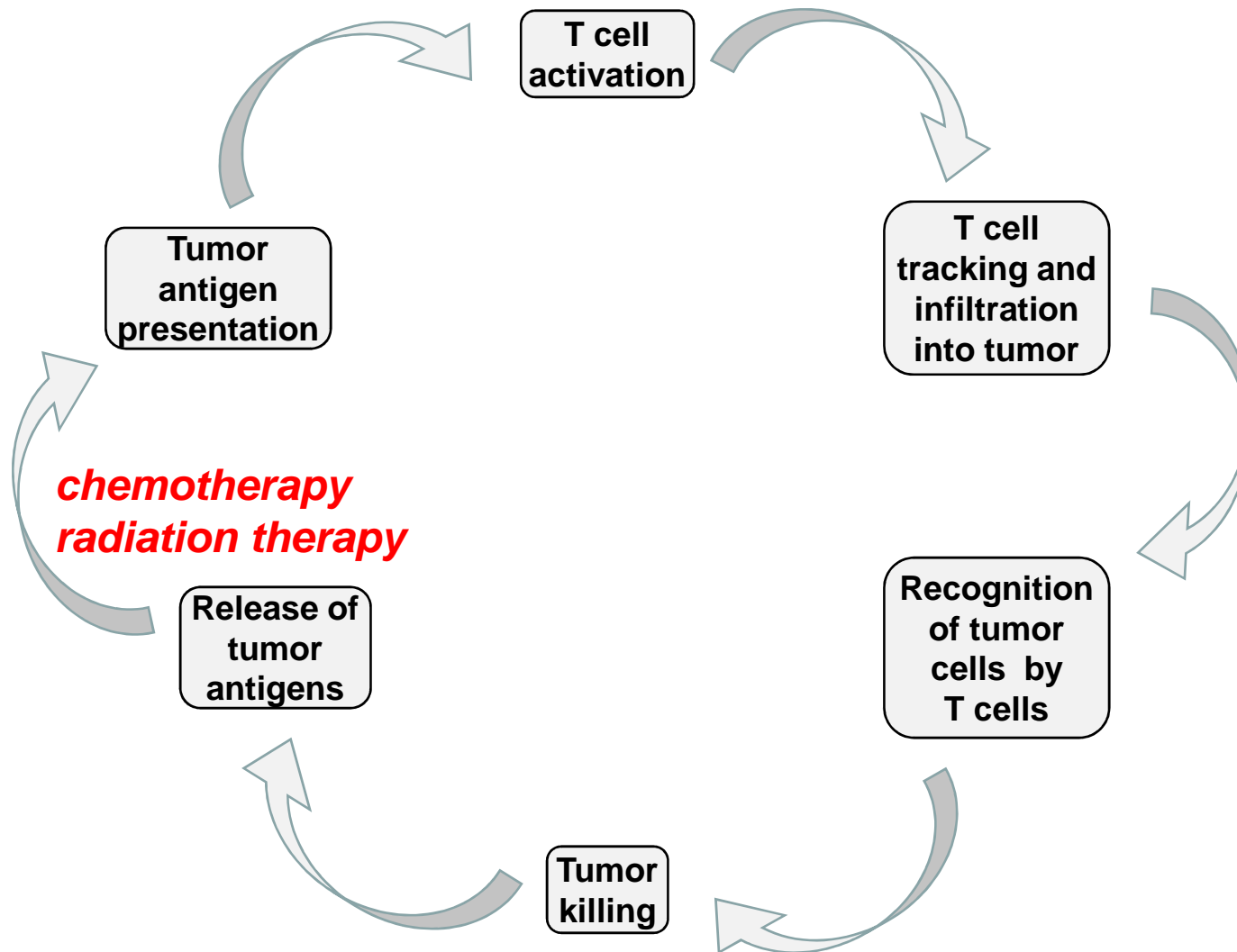
Outline

1. *Immunosurveillance and Immunoediting*
2. *Tumor-associated antigens*
3. *Cancer Immunity Cycle*
4. ***Immunotherapy approaches***
5. *Take Home Messages*

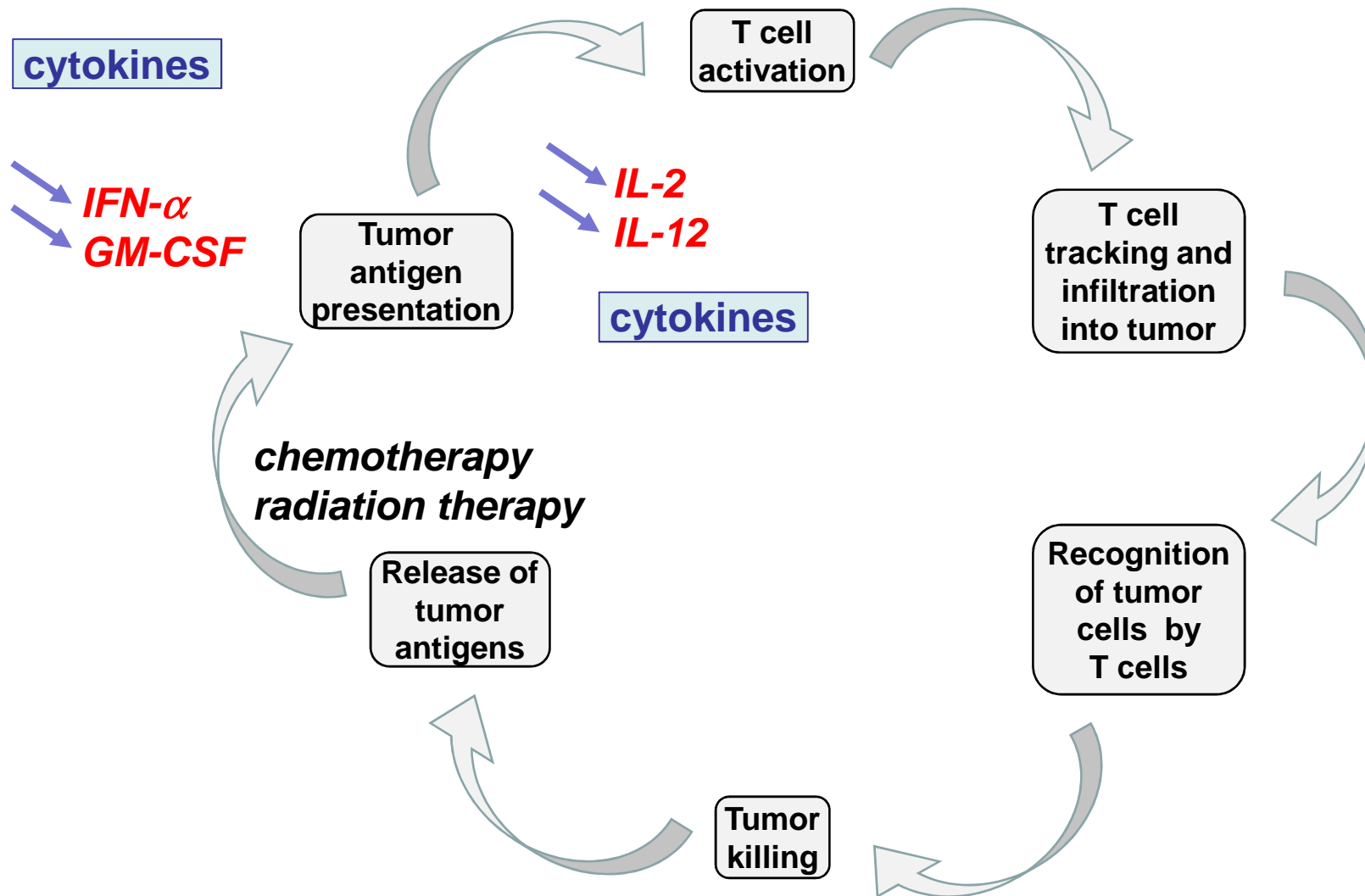
Approaches to Tumor Immunotherapy



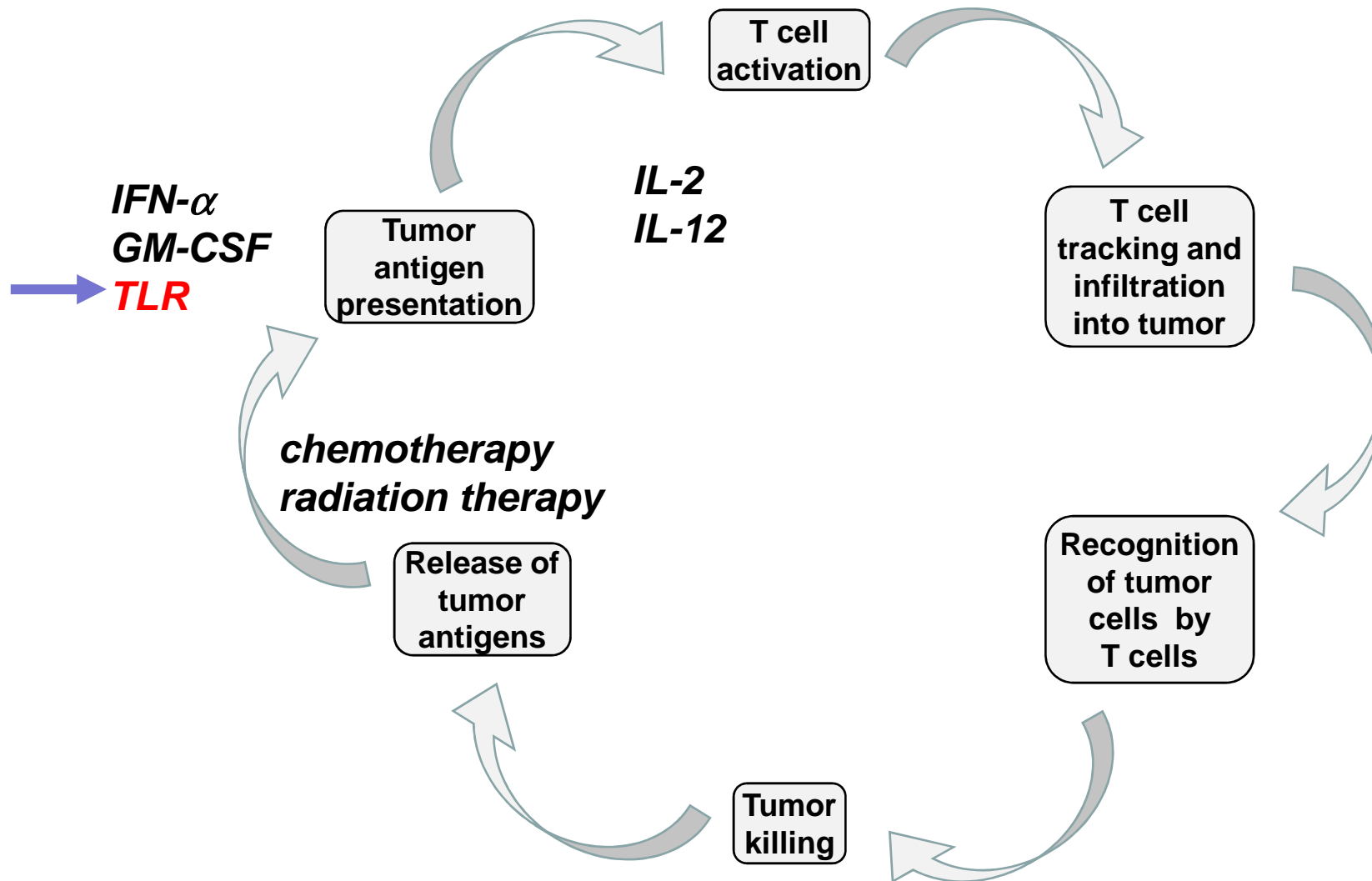
Approaches to Tumor Immunotherapy



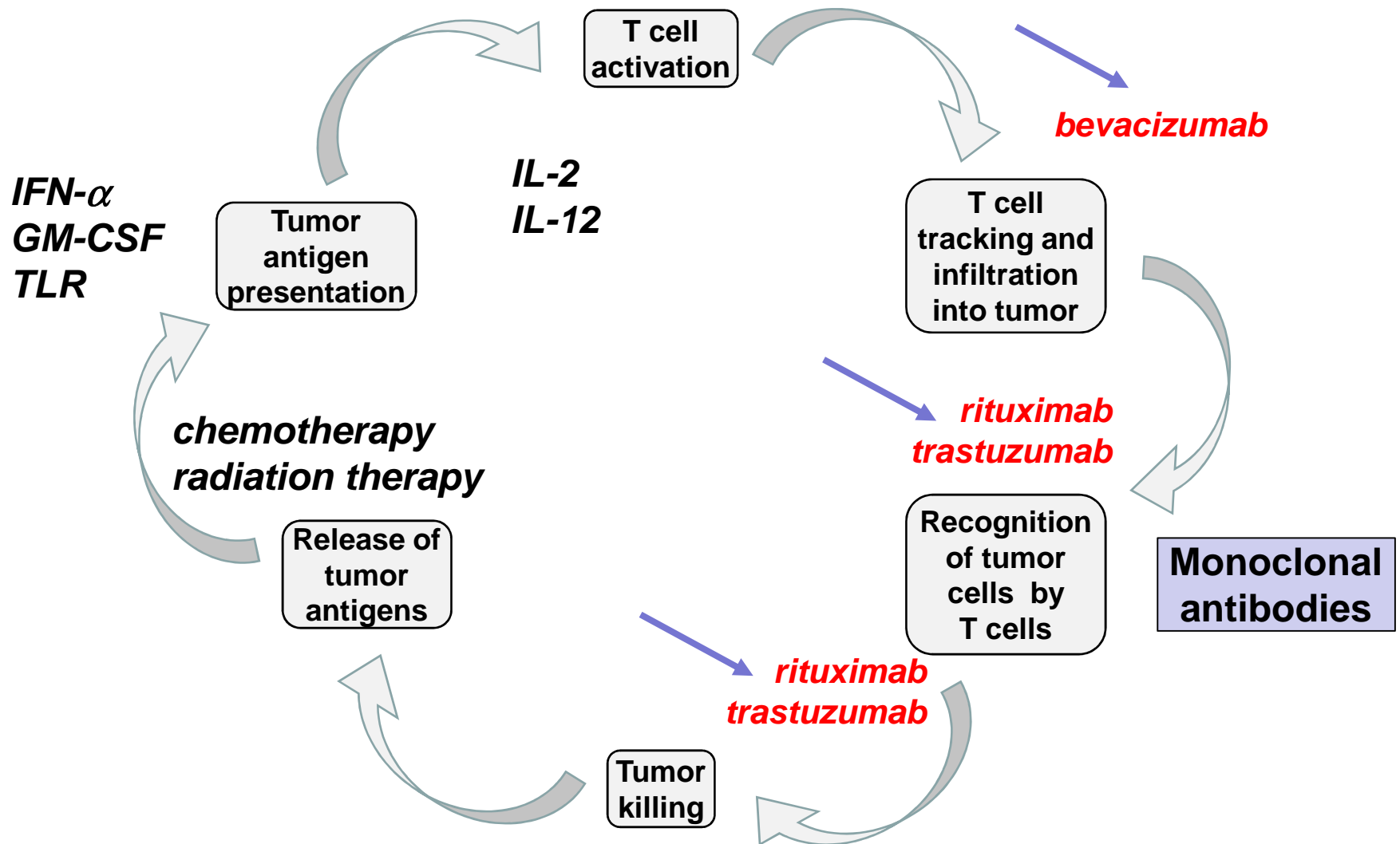
Approaches to Tumor Immunotherapy



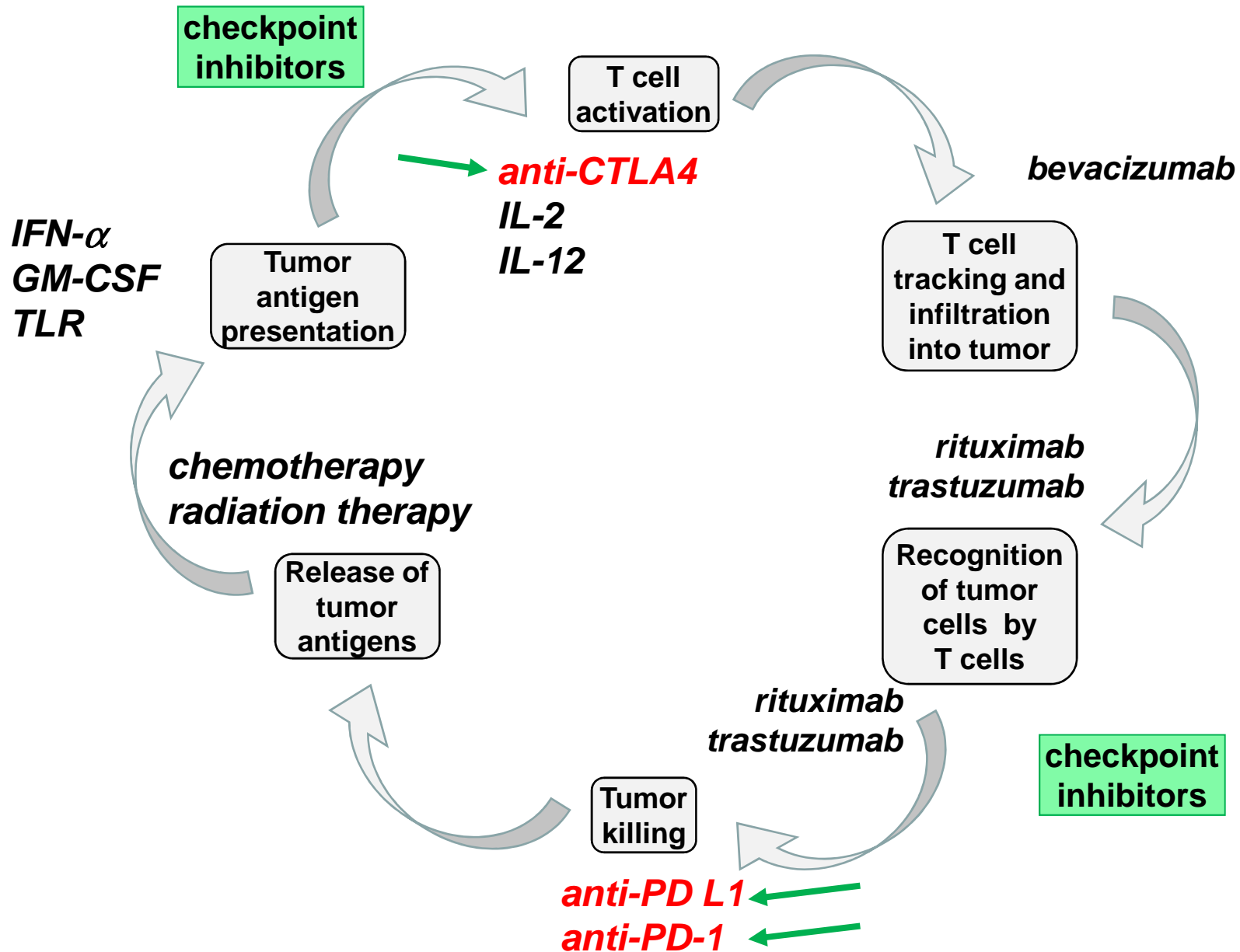
Approaches to Tumor Immunotherapy



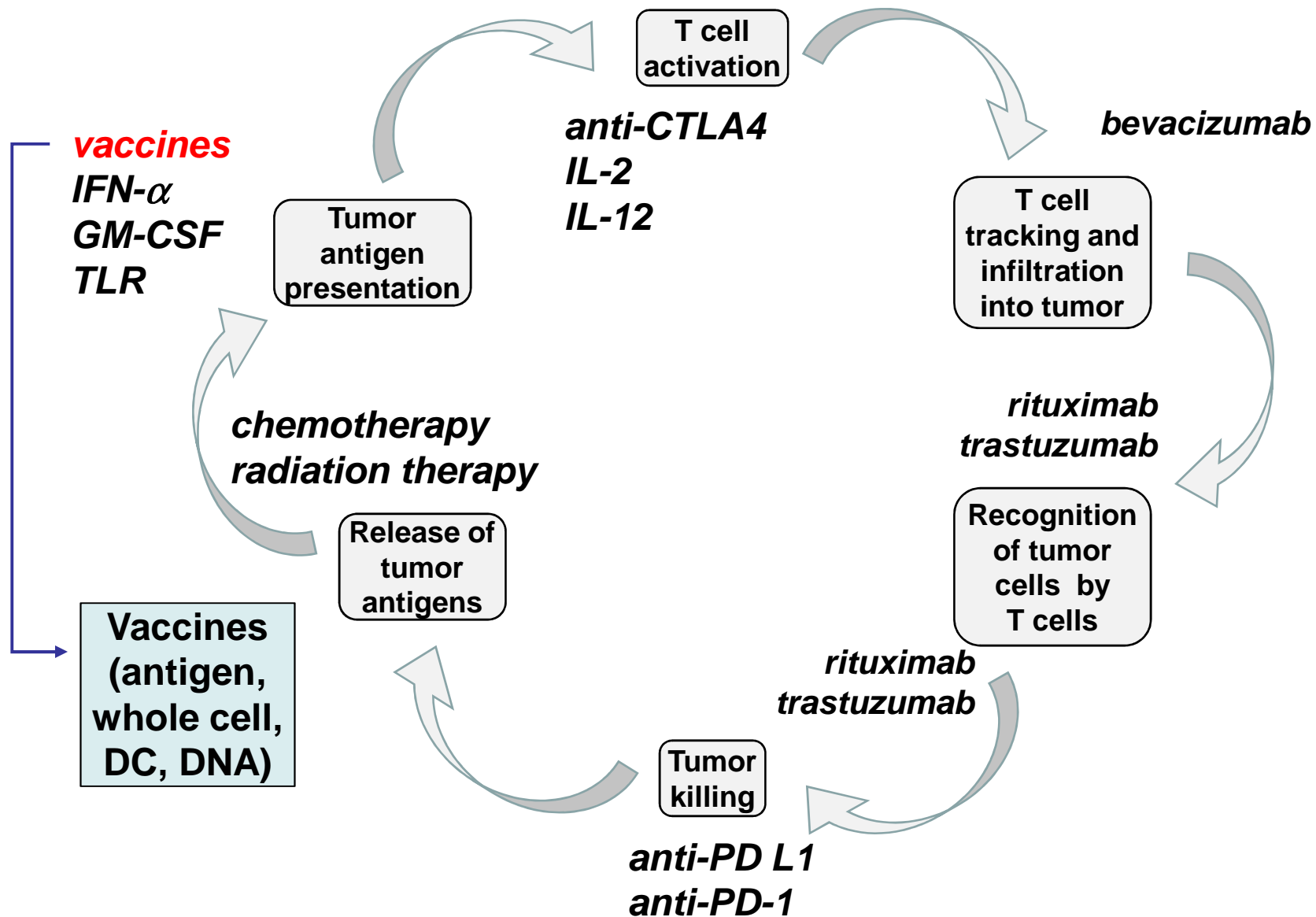
Approaches to Tumor Immunotherapy



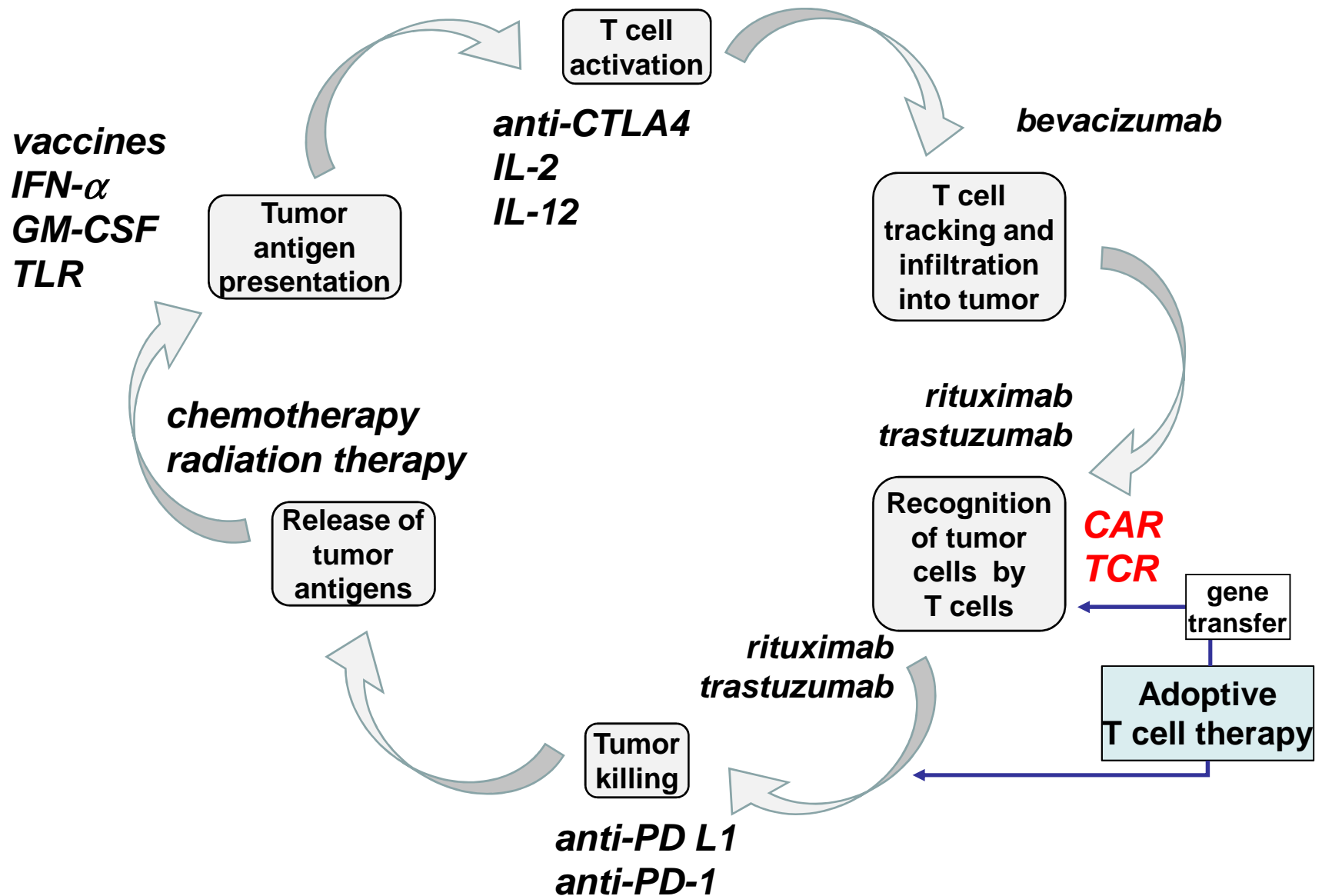
Approaches to Tumor Immunotherapy



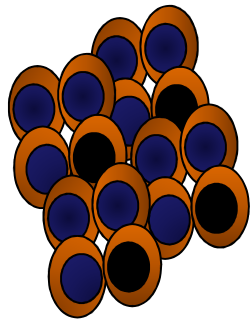
Approaches to Tumor Immunotherapy



Approaches to Tumor Immunotherapy



Combinations



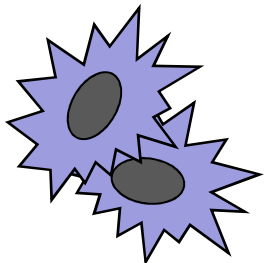
cancer cells

Surgery
Chemotherapy
Radiation Therapy

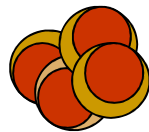
Immunotherapy:

- Increase tumor antigenicity
- Increase tumor immunogenicity
- Increase tumor immune susceptibility

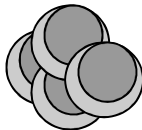
effective antineoplastic therapy



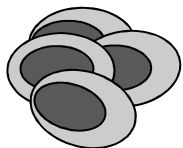
dendritic cells



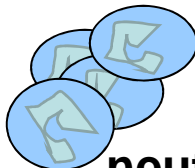
NK cells



T cells



monocytes



neutrophils

Immunotherapy:

- Activation of innate immunity
- Activation of adaptive immunity
- Inactivation of suppressive factors

Radiation therapy and the abscopal effect

- Abscopal effect (1953): “away from the target”
- Tumor regressions in renal cell carcinoma, lymphoma and leukemia, neuroblastoma, breast carcinoma and melanoma
- Immune-mediated mechanism

N Engl J Med 366 (2012) 925–931

Int J Radiat Oncol Biol Phys. 85 (2013) 293-295

Am J Clin Oncol. 38 (2015) 119-125

Cancer Letters 356 (2015) 82–90

Chemotherapy has stimulatory and inhibitory effects on the immune system

Immune-Suppression	Immune-Stimulation
<ul style="list-style-type: none">• lymphopenia• non-immunogenic cell death (apoptosis)	<ul style="list-style-type: none">• enhanced antigenicity and immunogenicity• homeostatic proliferation• inhibition of Tregs and MDSC

Lessons and Take Home Messages

- Immunosurveillance has a key role in preventing and fighting cancer.
- Immunotherapy as a pillar of cancer therapy.
- Integration of immunotherapy concepts into cancer therapies will lead to improved outcomes.



12/20/2013