



Society for Immunotherapy of Cancer

Mutation Drivers of Immunological Responses to Cancer

Eduard Porta-Pardo

La Caixa Junior Leader Fellow

Barcelona Supercomputing Center (BSC)

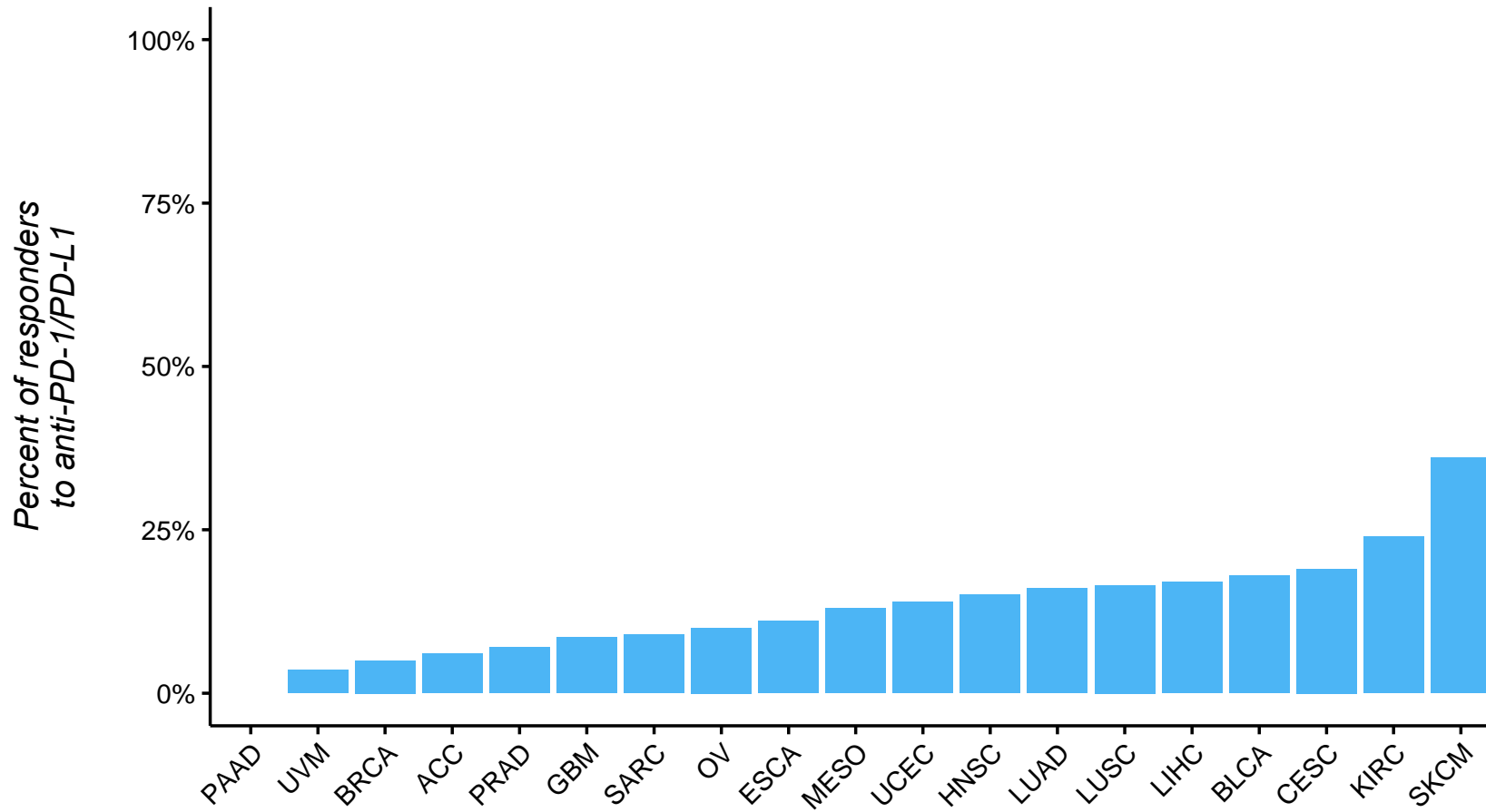
Financial conflicts of interest

None



Society for Immunotherapy of Cancer

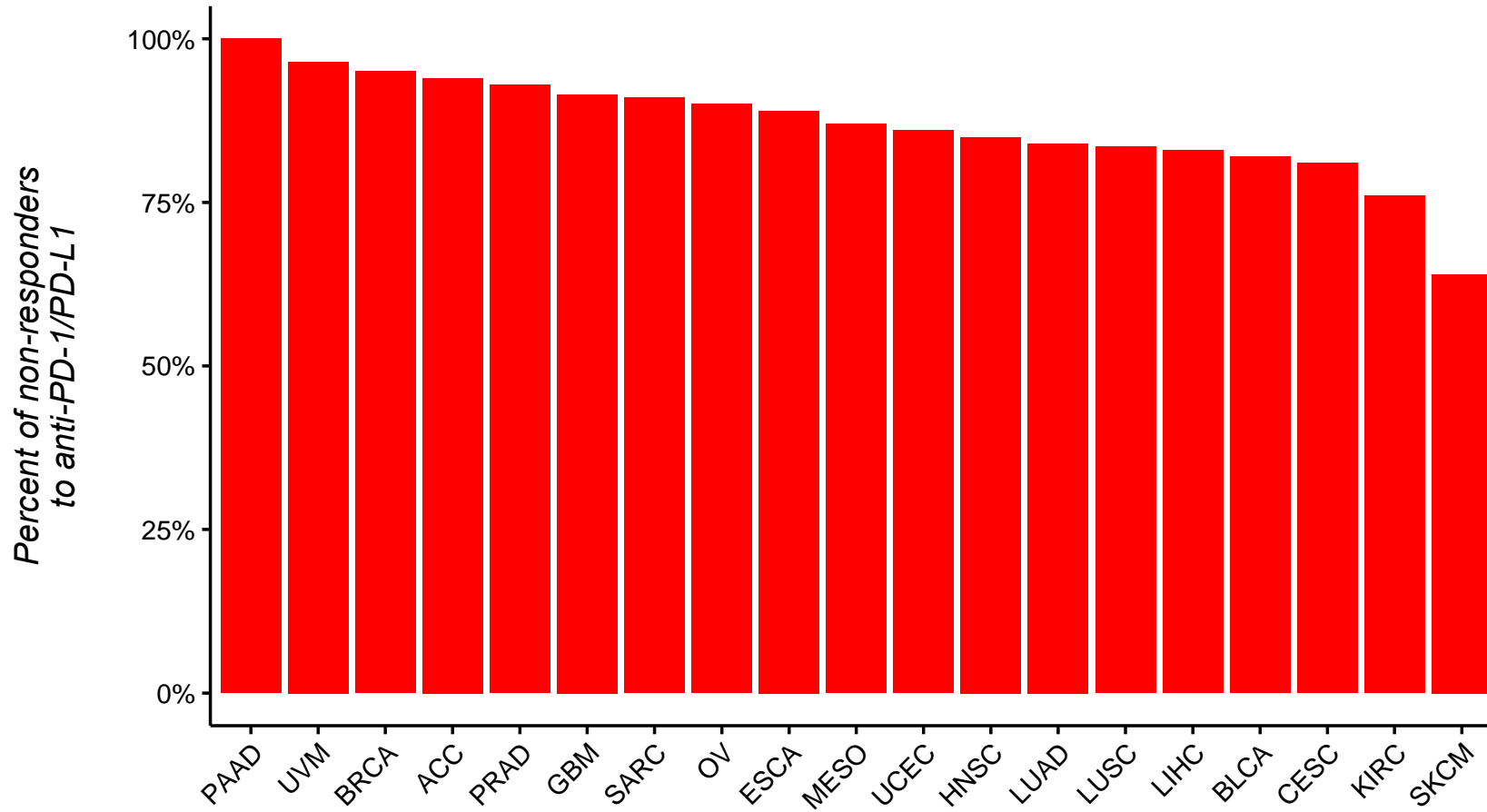
Exciting times in cancer immunology



Society for Immunotherapy of Cancer

Data from Joo Sang Lee and Eytan Ruppin, Jama Oncology, 2019

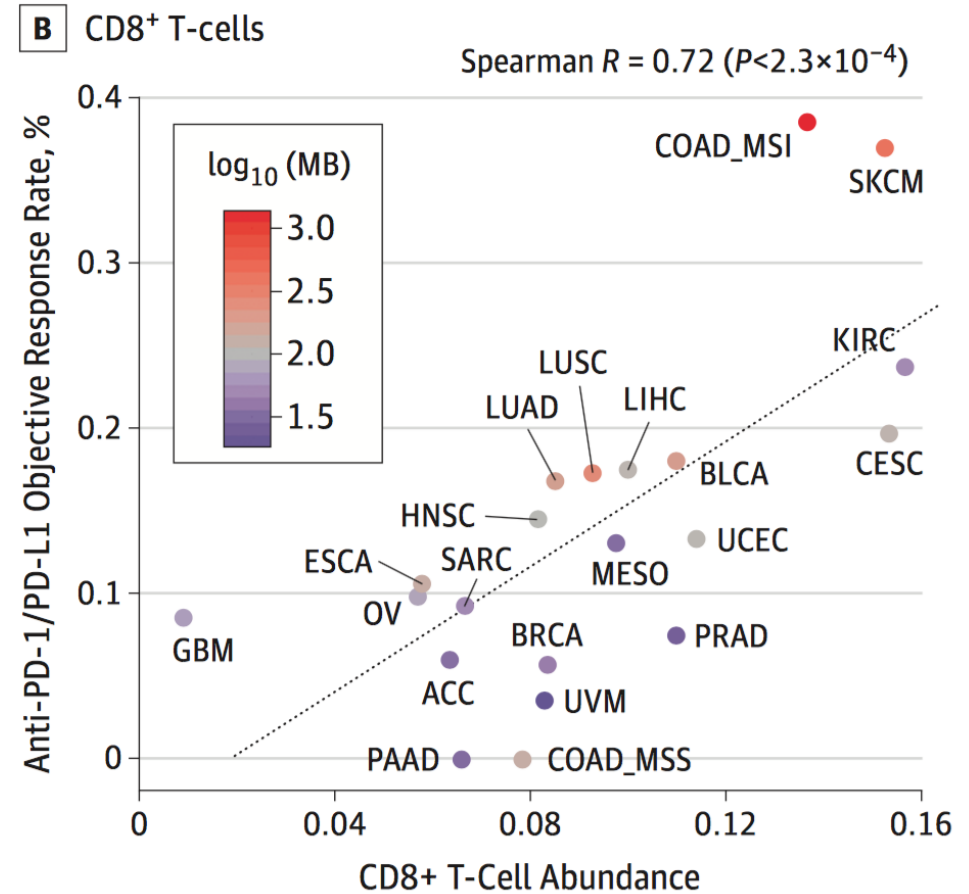
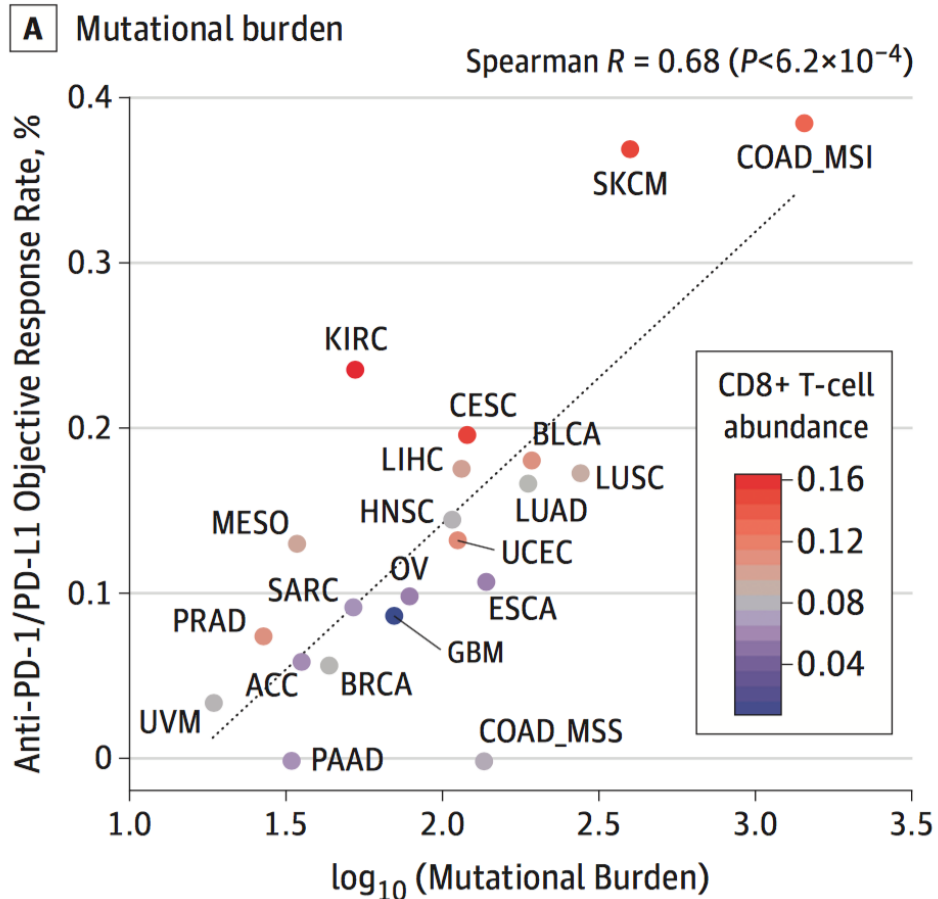
... but there's still a lot to do!



Society for Immunotherapy of Cancer

Data from Joo Sang Lee and Eytan Ruppin, Jama Oncology, 2019

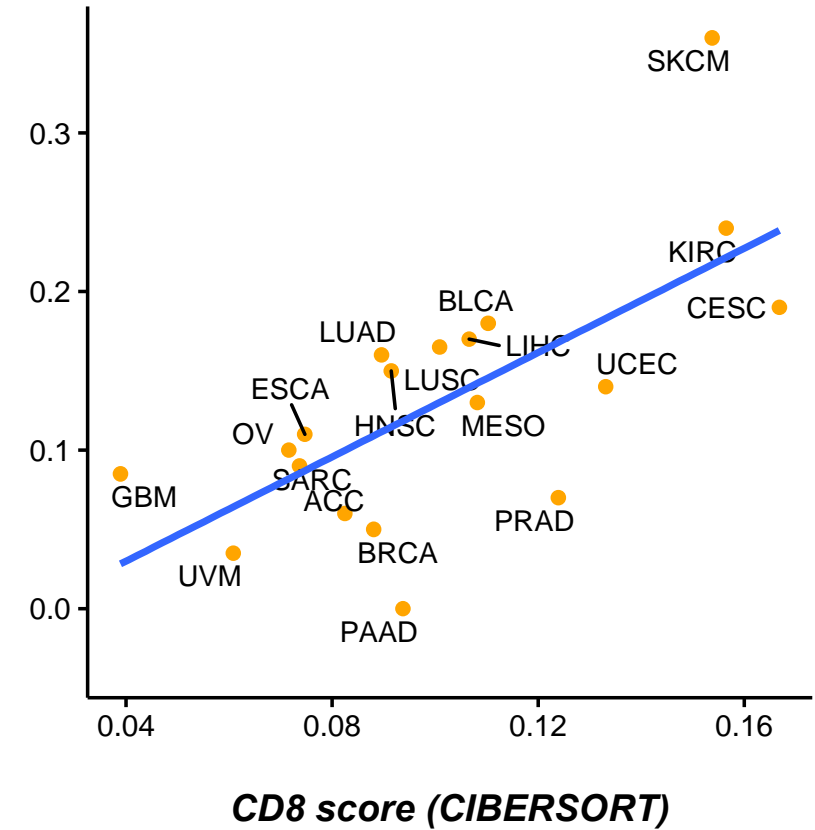
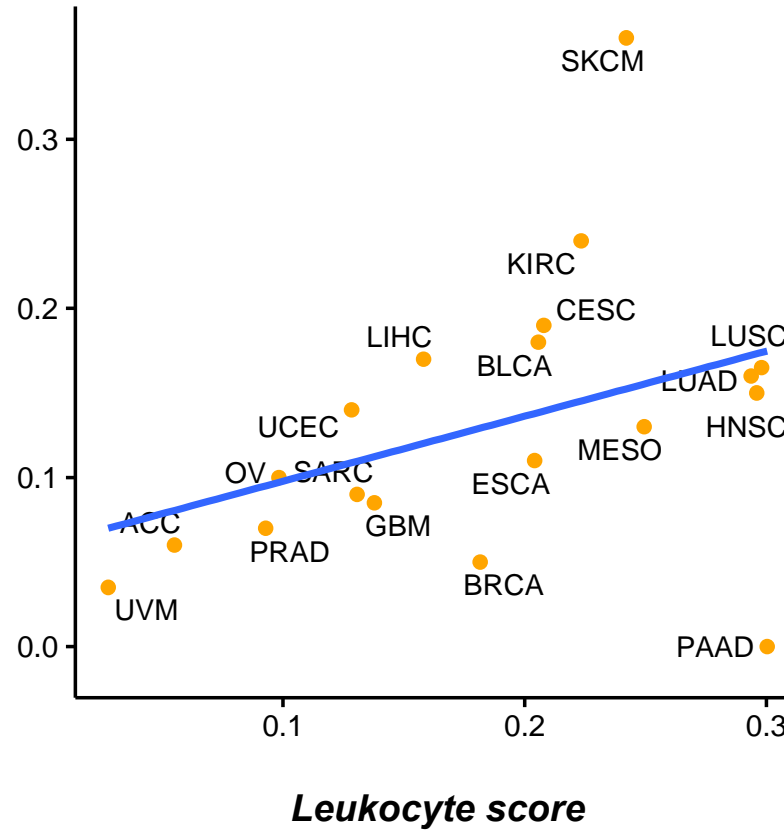
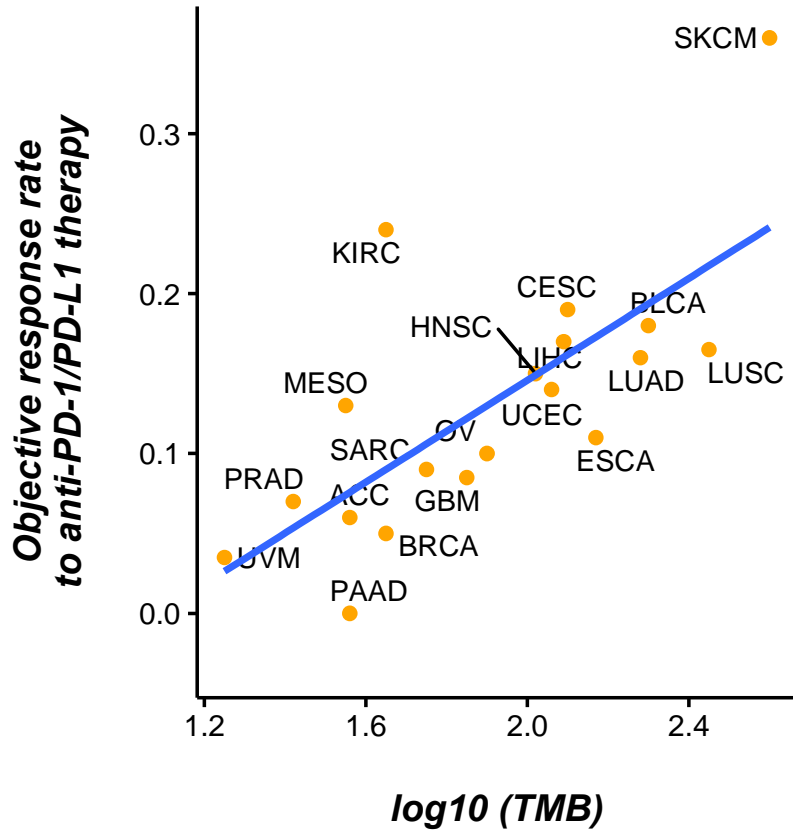
Predicting success of immune-based therapies



Society for Immunotherapy of Cancer

Joo Sang Lee and Eytan Ruppin, *Jama Oncology*, 2019

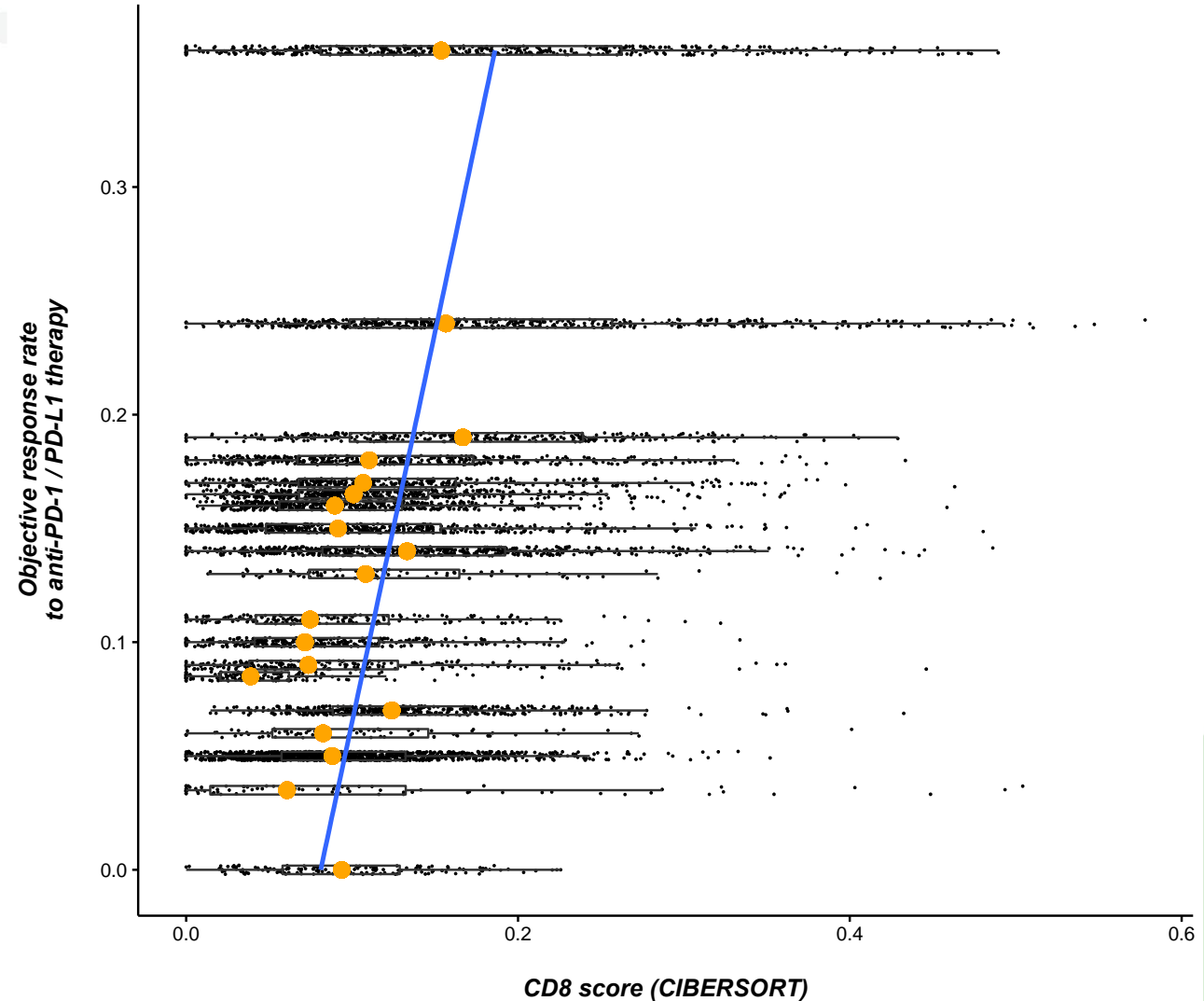
This is also true with other immune scores



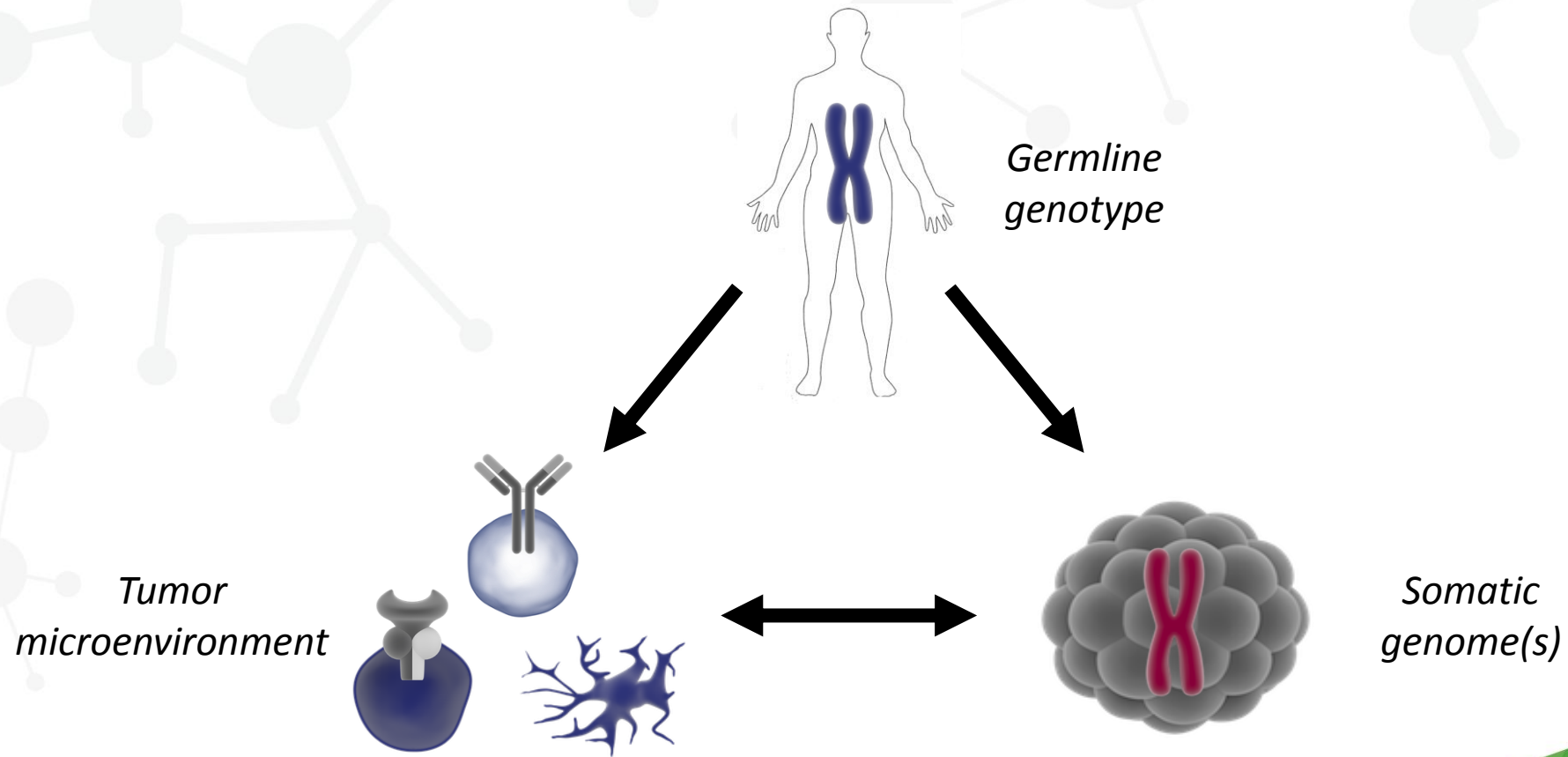
Medians hide an immense variability

Each black dot is a TCGA sample.

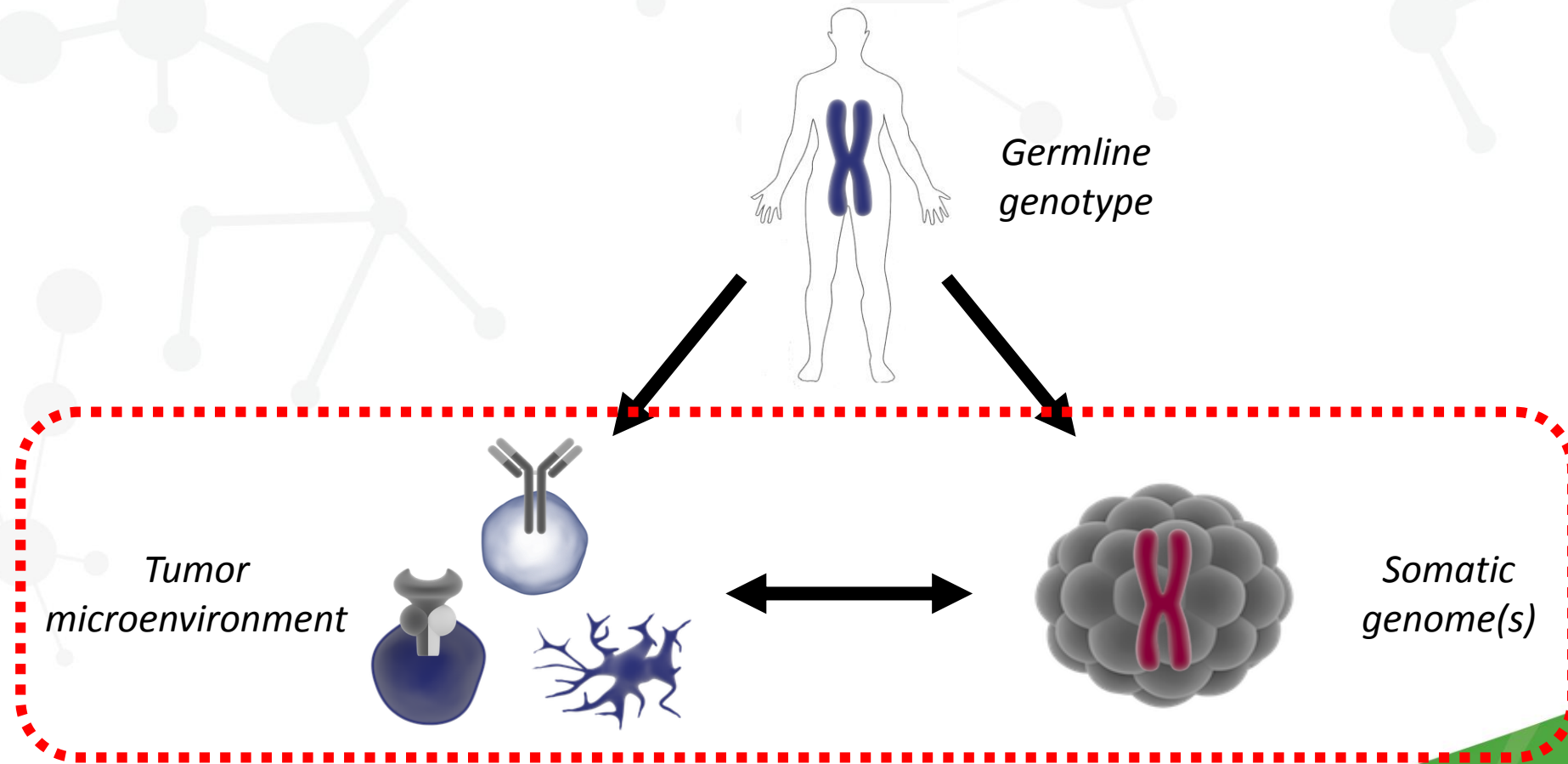
Orange dots represent the median of CD8 score for each cancer type



This variability stems from the “trialogue”



This variability stems from the “trialogue”



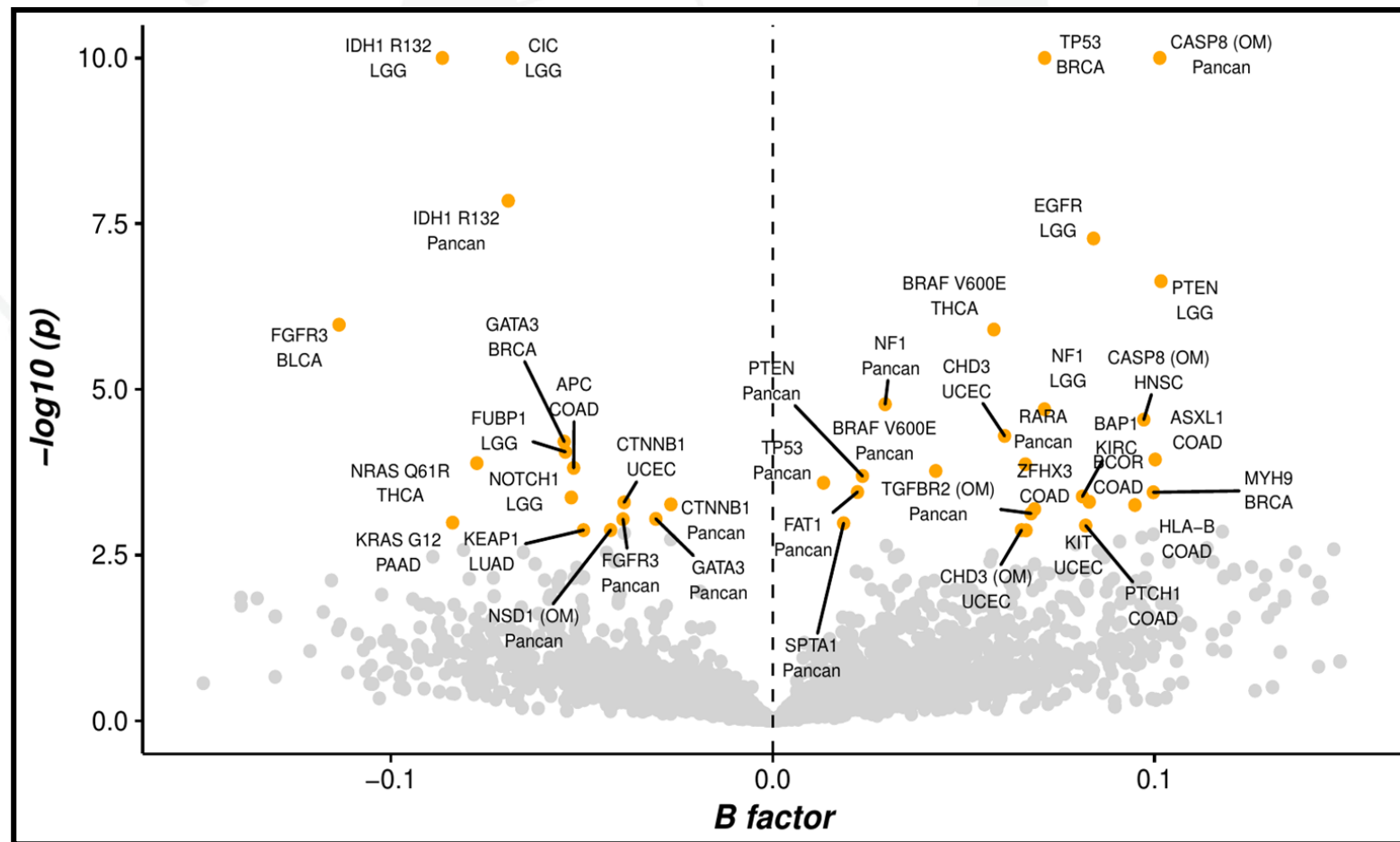
Known driver – TME interactions

Cold Tumors

Hot Tumors

Correlation between the presence of driver mutations in TCGA samples and the leukocyte score (methylation)

Positive B values indicate more leukocytes and viceversa



Society for Immunotherapy of Cancer

Rooney *et al.*, Cell, 2015
Tamborero *et al.*, Clin Can Res, 2018
Thorsson *et al.*, Immunity, 2018

Open questions



Victoria
Ruiz-Serra

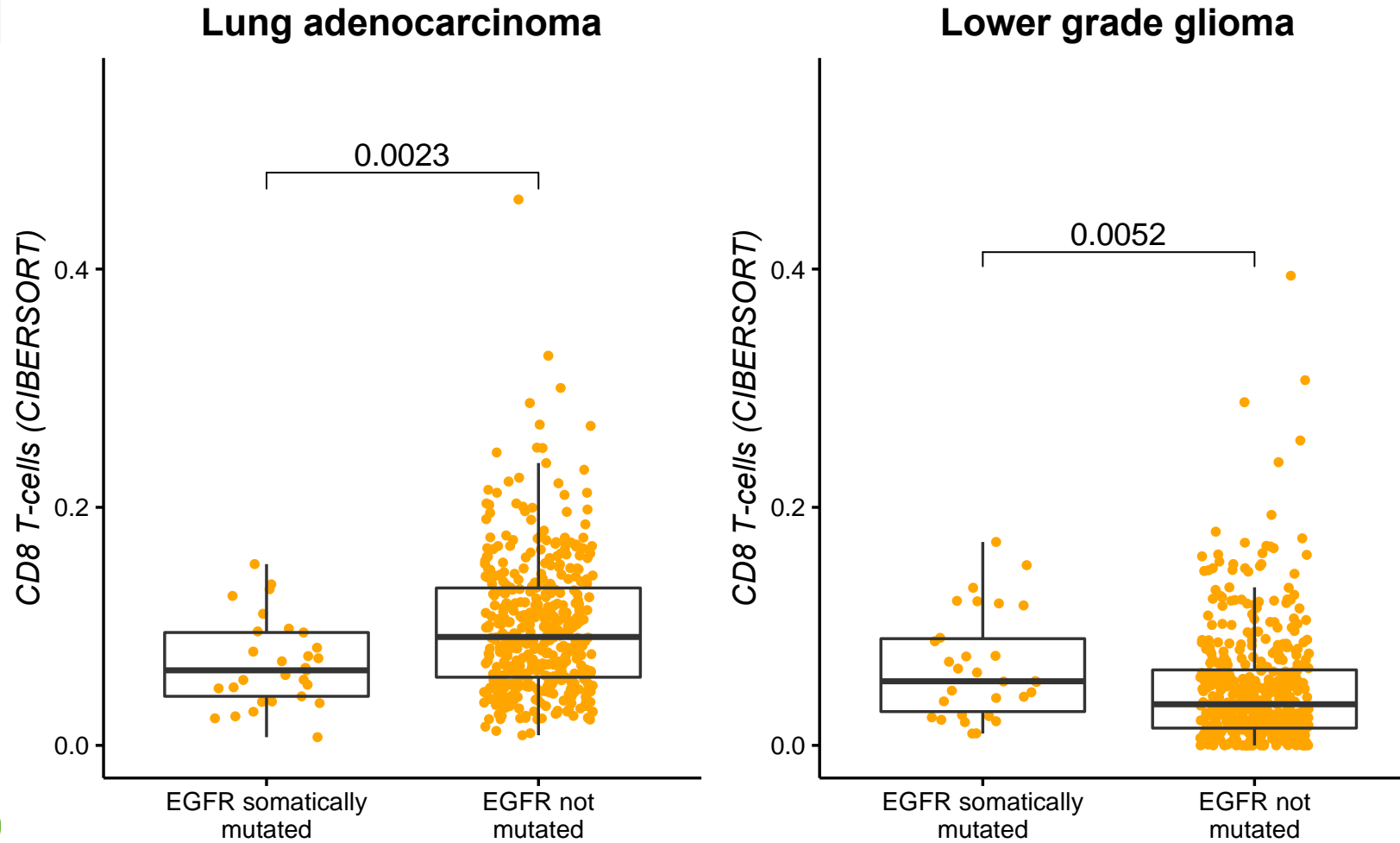
- 1 – Do mutations in cancer driver genes always correlate in the same direction?
- 2 - Do all mutations in cancer driver genes correlate similarly with the immune component of the TME?
- 3 – Do different mutations interact with each other?



Correlations might depend on the tissue



Victoria
Ruiz-Serra



Open questions

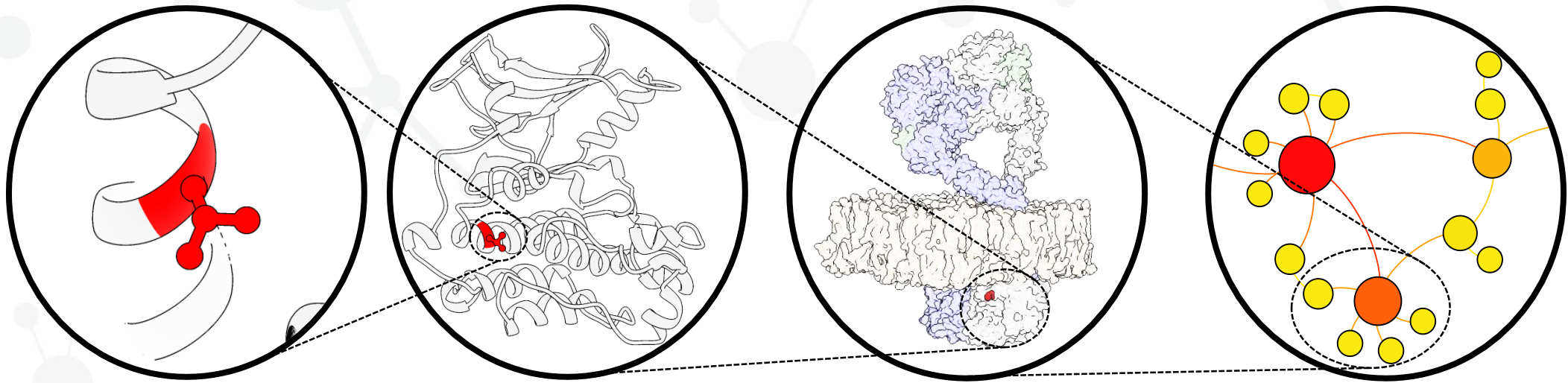


Victoria
Ruiz-Serra

- 1 – Do mutations in cancer driver genes always correlate in the same direction? **They might!**
- 2 - Do all mutations in cancer driver genes correlate similarly with the immune component of the TME?
- 3 – Do different mutations interact with each other?



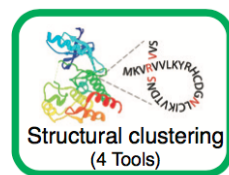
Perspective is important



Society for Immunotherapy of Cancer

Bailey*, Tokheim*, Porta-Pardo* *et. al.*, Cell, 2019

Not all driver mutations are equal



Structure – guided analysis

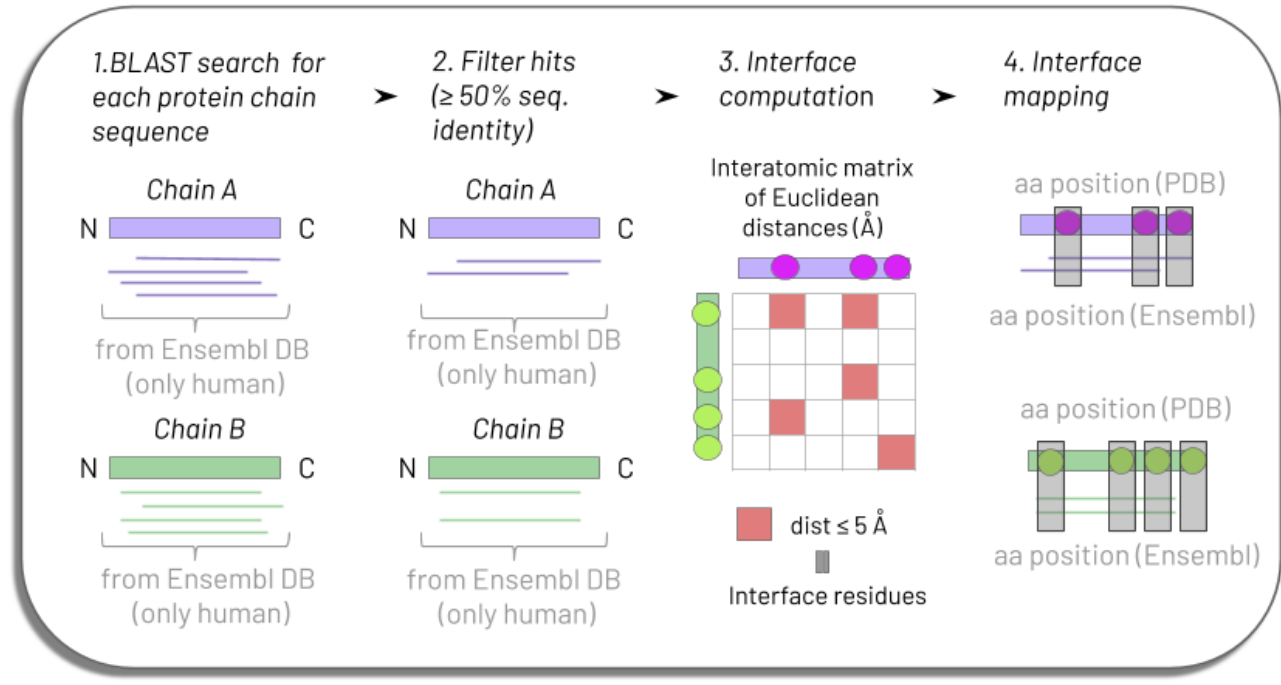
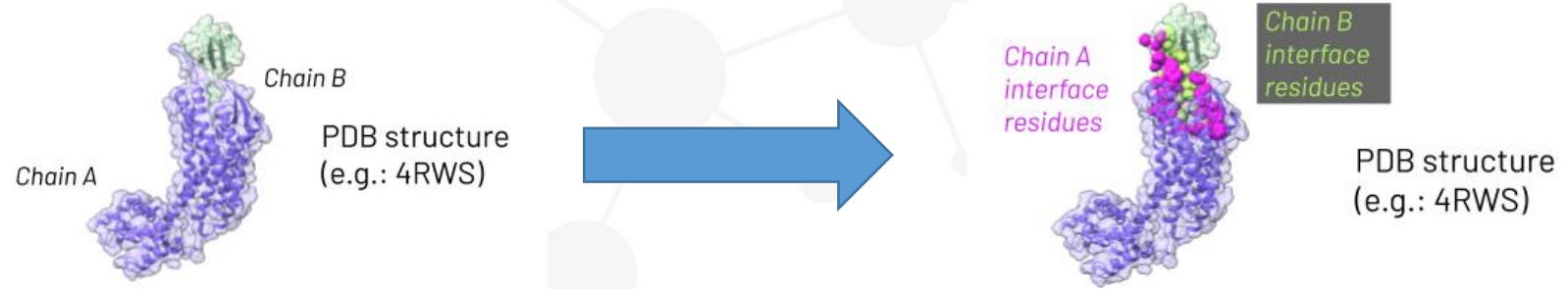


Victoria
Ruiz-Serra

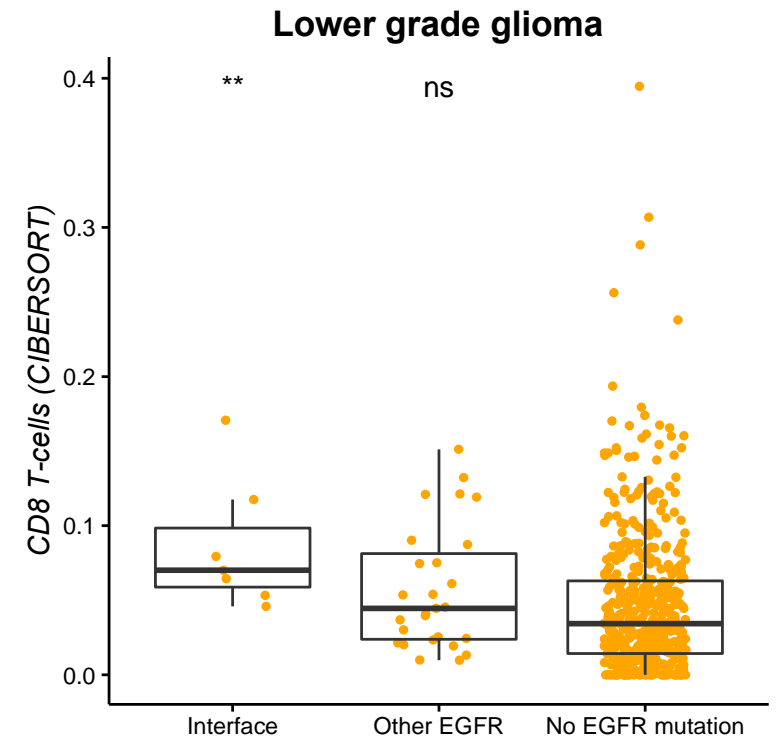
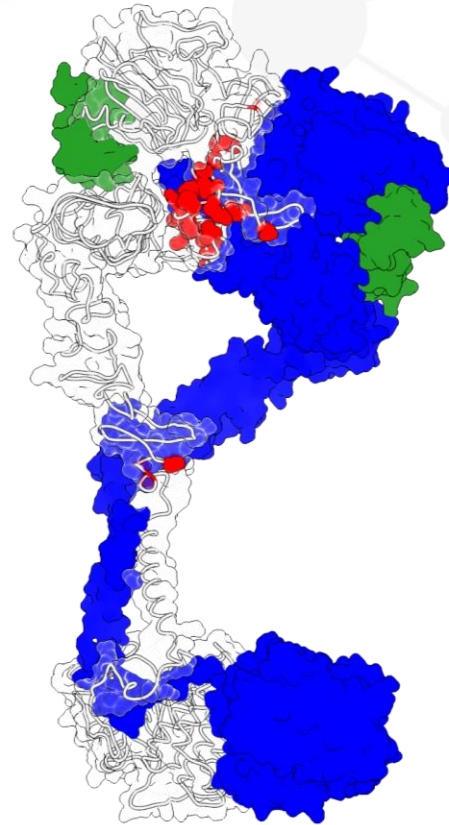
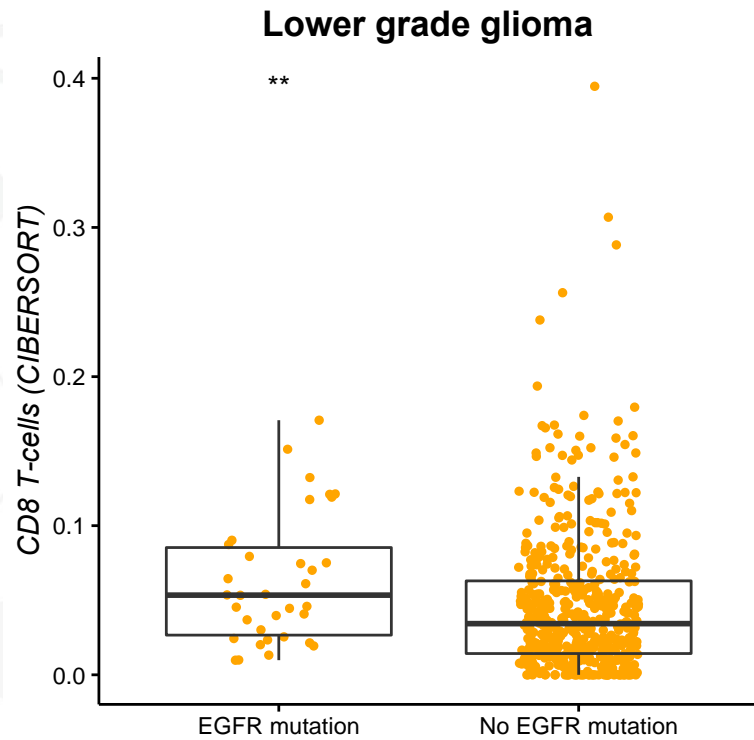
>200.000 PDB files
analyzed

~100.000 have >50%
sequence identity
with human protein
AND potential
interface

Catalogue with
~150.000 interfaces
(protein, ligands or
nucleic acids)



Structure analysis of EGFR - LGG

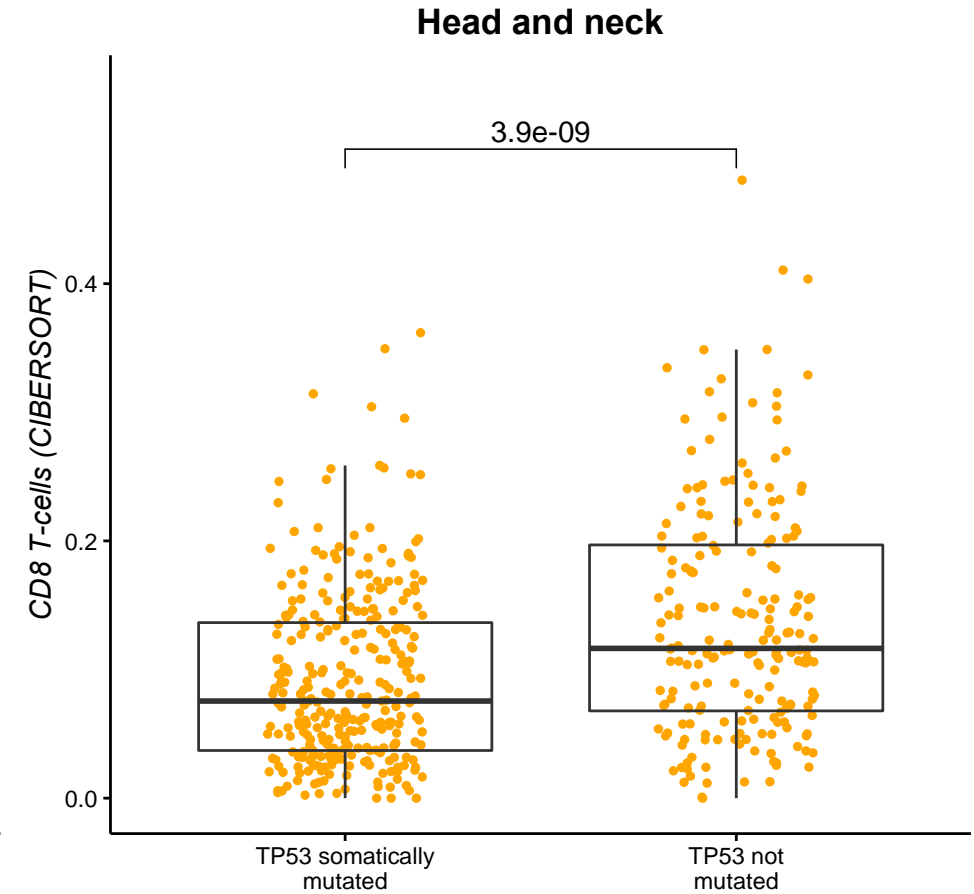
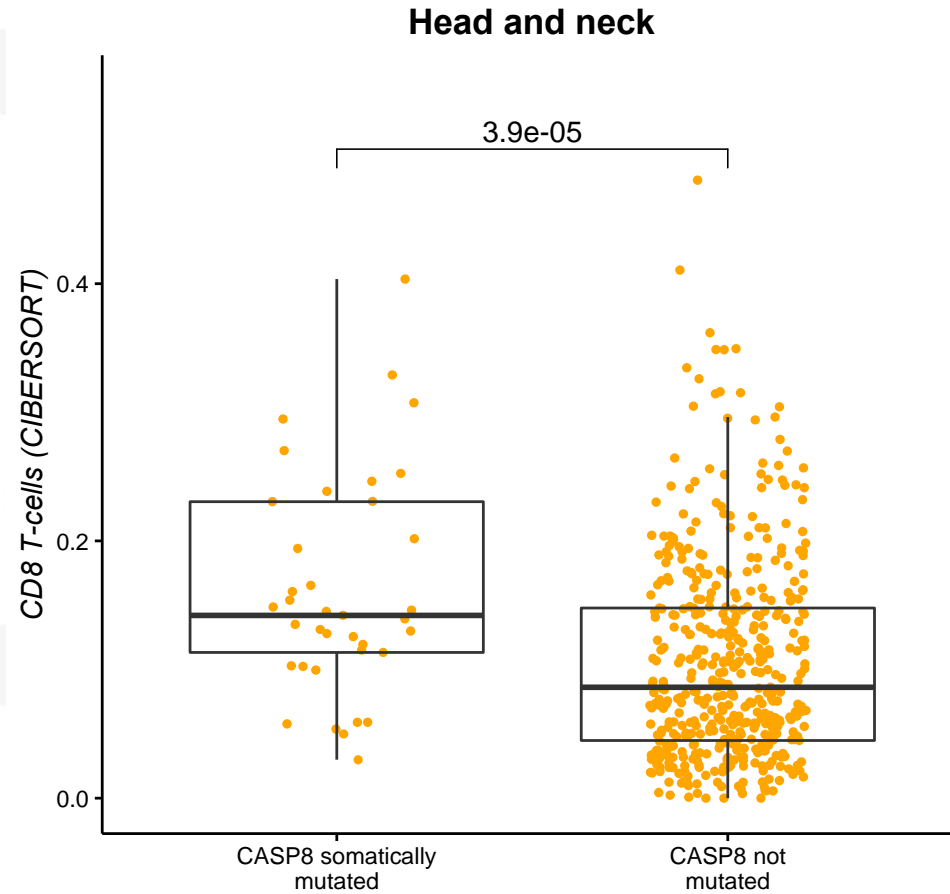


Open questions

- 1 – Do mutations in cancer driver genes always correlate in the same direction? **They might!**
- 2 - Do all mutations in cancer driver genes correlate similarly with the immune component of the TME? **No!**
- 3 – How do different mutations interact with each other?

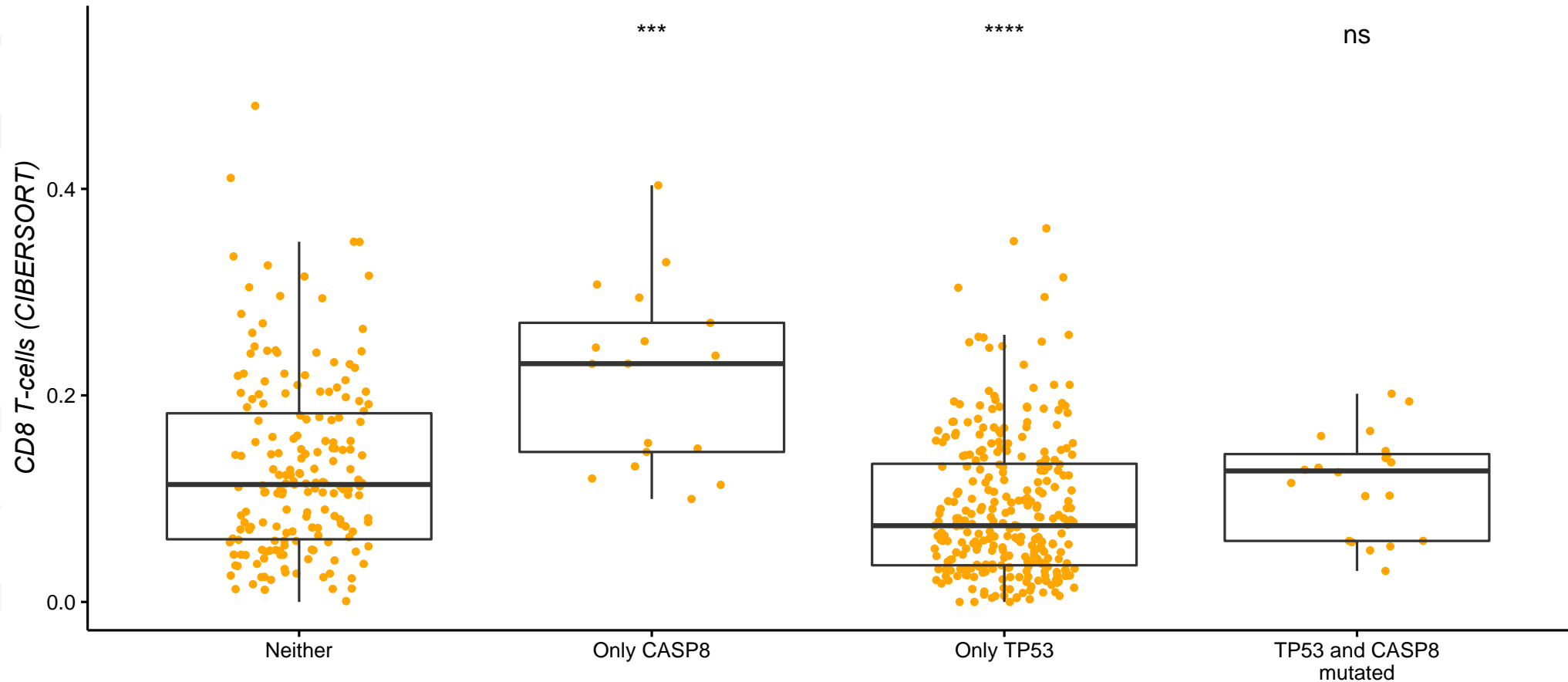


Different drivers can have different effects...



...and they can interact with each other!

Head and neck



Open questions



Victoria
Ruiz-Serra

1 – Do mutations in cancer driver genes always correlate in the same direction? **They might!**

2 - Do all mutations in cancer driver genes correlate similarly with the immune component of the TME? **No!**

3 – Do different mutations interact with each other? **They can!**



Thank you!

Collaborators



Victoria Ruiz-Serra
Alfonso Valencia
Carlos Garcia-Prieto

Valencia's lab

Davide Bedognetti
Farshad Farshidfar
Elad Ziv
Rosalyn Samayan
Vesteinn Thorsson
Adam Godzik

Germline Immune
working group



Funding Agencies



Obra Social "la Caixa"

