

# Identification and Management of Immune-Related Adverse Events in the Emergency Setting

William Goldenberg, MD, FAAEM  
*Naval Medical Center, San Diego*



# Disclosures

- No relevant financial relationships to disclose
- I *will* be discussing non-FDA approved indications during my presentation.

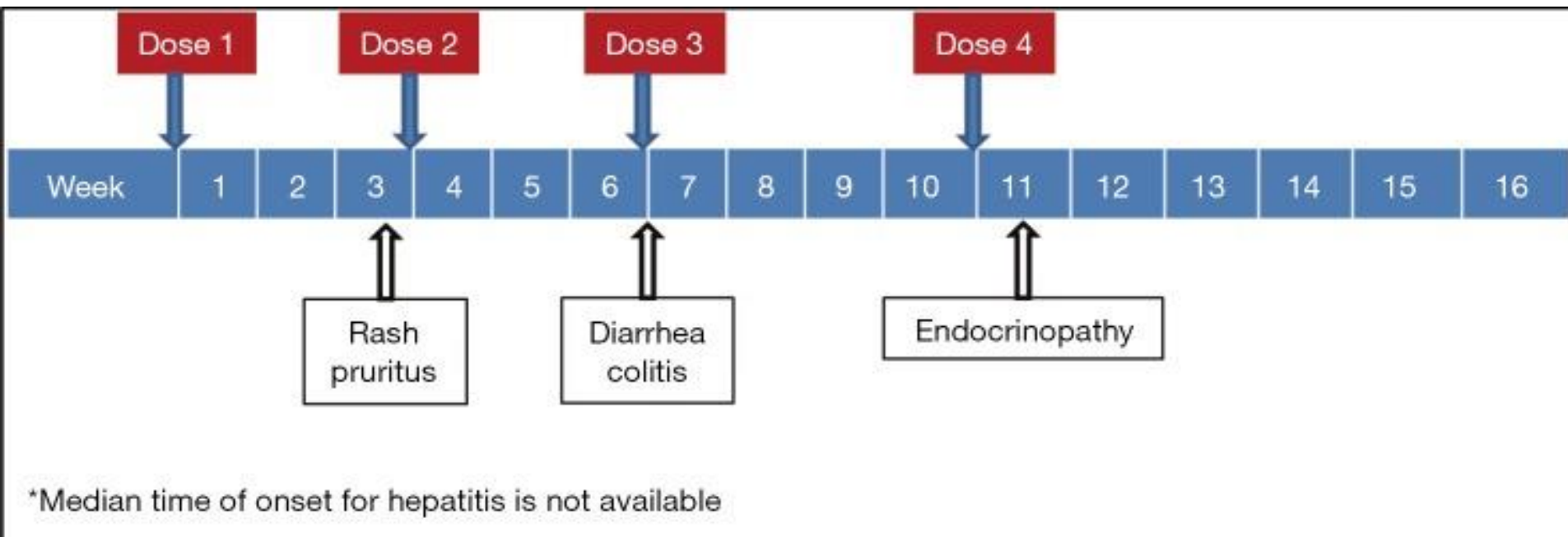
# Mechanism CTLA-4 & PD-1

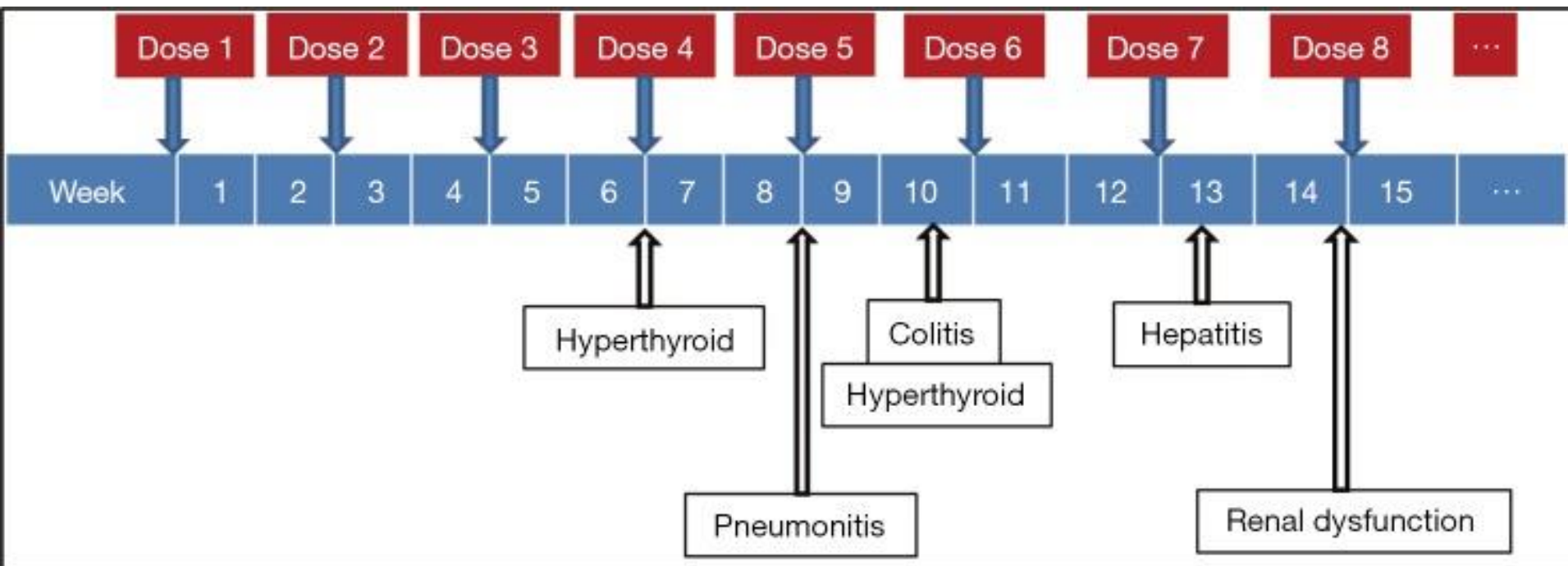
- Involved in maintaining appropriate immune response
- Downregulates & prevents inappropriate activity
- Autoimmune type response
- Thinking “Chemo” will lead down wrong path
- **Think Graft versus Host disease**



# Timing

- Most occur within first 3 months
- May occur after final dose
- Some dose dependent
- Grade 3-4 toxicity 10% overall





# Common Medications

- Corticosteroids
  - **Prednisone**
  - Dexamethasone
  - Methylprednisolone
  - Hydrocortisone
  - Cortisone
- Mycophenolate mofetil (CellCept)
  - Standard BID
- TNF inhibitors
  - Infliximab
  - Adalimumab
  - Others



# Dermatologic Toxicity



## Dermatologic Toxicity

- Presents three weeks into therapy
- Mild – maculopapular rash with or without symptoms
  - Pruritis, burning, tightness
  - 10%-30% TBSA
  - Limiting ADL's
  - Topical steroids, hydroxyzine, diphenhydramine
- Moderate – diffuse, nonlocalizing rash
  - 30-50% TBSA
  - Topical corticosteroids, hydroxyzine, diphenhydramine
  - Consider systemic corticosteroids if no improvement in one week (0.5-1mg/kg/day)



## Severe

- Blisters, dermal ulceration, necrotic, bullous or hemorrhagic
- Systemic corticosteroids 1-2 mg/kg/day prednisone equivalent
- Taper over one month following improvement

## Vitiligo

- Most cases permanent
- No treatment
- Intra oral lesions – consider candidiasis.





# Stevens Johnsons Syndrome (SJS) / TEN (Toxic Epidermal Necrolysis)





## Vitiligo



# Patient 1









- PMH: Small Cell Lung Cancer, HTN, DM
- Meds: Nivolumab



EXAM



# Management

- Fluids & Analgesia
- Stool Studies
- CT scan
- ABX & steroids



# Diarrhea / Colitis



- Mild - <4 stools above baseline/day
- Testing
- Treatment
  - Symptomatic: oral hydration & bland diet
  - No corticosteroids
  - Avoid meds
  - Budesonide – no significant difference



- Moderate – 4-6 stools above daily baseline
- Abdominal pain, blood or mucus in stool
- Testing - C. diff., lactoferrin, O & P, stool Cx
- Systemic corticosteroids 0.5/mg/kg/day equivalent if symptoms > one week



## Severe

- 7 stools above baseline/day
- Peritoneal signs, ileus or fever
- Admission
- IV hydration
- Rule out perforation
- Stool studies



- Systemic corticosteroids 1-2mg/kg/day equivalent, if no perforation
  - Hold if clinically stable until stool studies available (24hrs)
- Unstable – High dose corticosteroids:  
methylprednisolone 125 mg IV daily x 3 days to evaluate responsiveness
- Consider empiric antibiotics for fever or leukocytosis
- Infliximab 5 mg/kg if no response to corticosteroids
- Consider mycophenolate mofetil for select patients



# Hepatotoxicity

- 8-12 weeks after therapy initiation
- Avoid ETOH & acetaminophen





## Grade 2 toxicity

- $2.5 < \text{AST/ALT} < 5$  times ULN
- $1.5 < \text{Bilirubin} < 3$  times ULN
- Corticosteroids 0.5-1 mg/kg/day & 1 mo. taper

## Grade $\geq 3$ toxicity

- Admission
- Methylprednisolone IV 125mg/day
- Consider mycophenolate mofetil 500mg PO Q12hrs

# Endocrinopathies

- <10%
- Both CTLA & PD-1 inhibitors



# Hypophysitis

- Fatigue, headaches, visual field defects
- ACTH, TSH, FSH, LH, GH, prolactin
- Imaging – enlarge pituitary gland
- 1-2 months after initiation of therapy
- Corticosteroids 1 mg/kg/day. Or IV dexamethasone 6 mg Q6hr x 3 days, or methylprednisolone 125 mg daily

# Endocrinopathies cont.

- Hypothyroidism
  - 1 wk-19 months onset after therapy initiation
  - Appropriate levothyroxine replacement
- Hyperthyroidism
  - Check TSH level
  - Acute thyroiditis secondary to immune activation
    - Corticosteroids 1 mg/kg for symptomatic patients
- Adrenal Insufficiency
  - Admission
  - Corticosteroids 60-80 mg prednisone or equivalent



# Pneumonitis

- Occur with CTLA-4 & PD1 inhibitors
- 5 months after treatment initiation
- New cough or dyspnea
- Multiple grades



# Pneumonitis

- Grade 2
  - Admission
  - Prednisone/prednisolone
    - Taper over one month after improvement seen
- Grade 3-4
  - Admission
  - Prednisone/prednisolone
  - Six week taper





# Pancreatic

- Elevation amylase & lipase
  - With both CTLA-4 & PD1 inhibitors
  - Without overt pancreatitis– monitor
  - Grade 3-4 with symptoms – hold therapy
- New onset diabetes with DKA
  - Normal ED treatment
  - Aggressive treatment of DKA





# Patient 2









# management





# Renal Insufficiency

- <1%
- Grade 1: up to 1.5 times above baseline
- Grade 2 to 3: 1.5-6 times baseline
- 10-12 months after initiation of treatment
- Full recovery with high dose corticosteroids. (>40 mg/day)

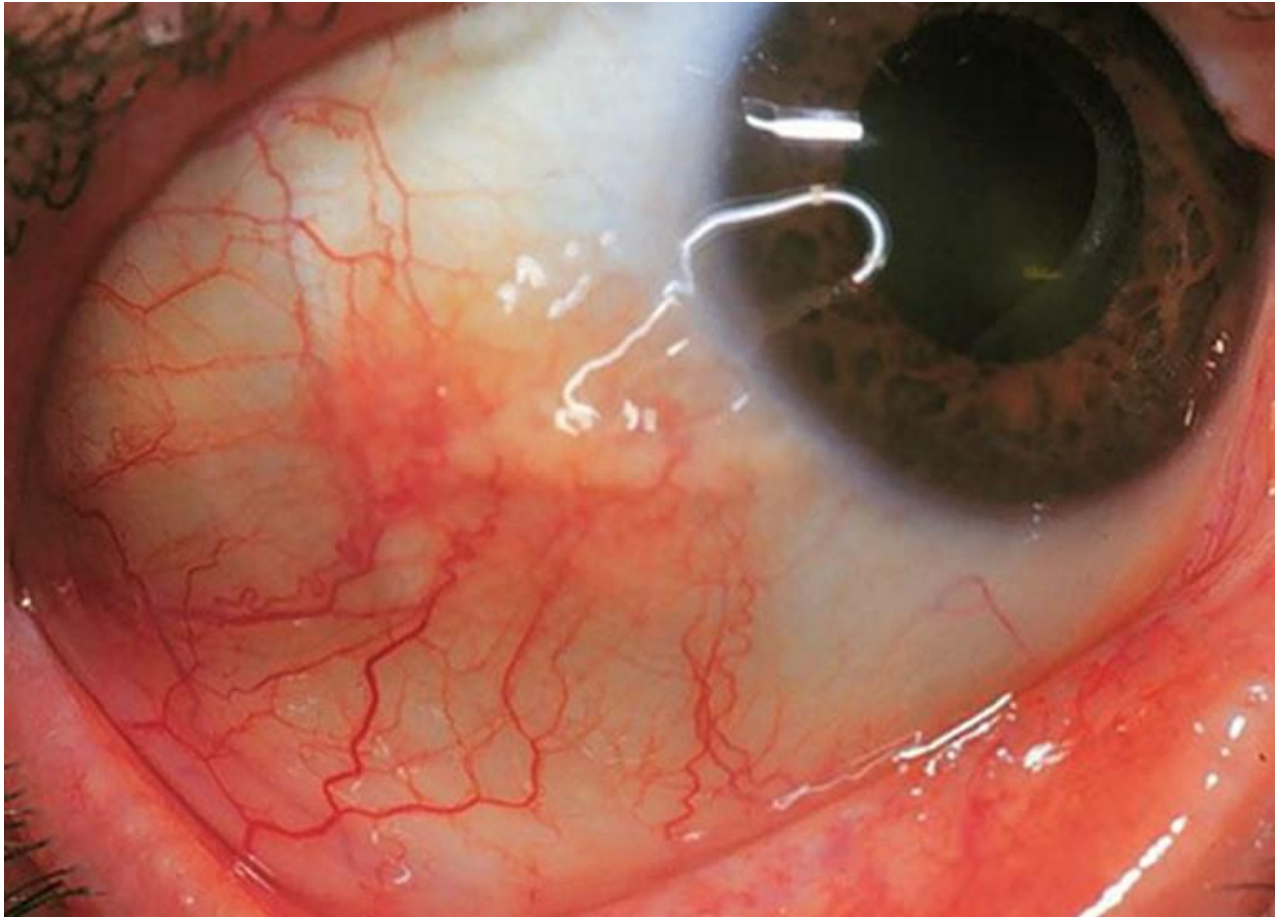


# Ophthalmologic

- <1%
- Episcleritis
- Uveitis
- Conjunctivitis
- Topical corticosteroids – prednisolone acetate 1%













## Rare irAEs

- <1%
  - Red cell aplasia
  - Thrombocytopenia
  - Hemophilia A
  - Guillain-Barre syndrome
  - Myasthenia gravis
  - Posterior reversible encephalopathy syndrome
  - Aseptic meningitis
  - Transverse myelitis
  - ??



## Case Study #3: 54-year-old male with NSCLC

- New immunotherapy 8 weeks ago for lung cancer
- Vision is blurry, & glasses don't work anymore
  - Denies eye pain
  - Mild HA “because he reads a lot & his glasses don't work anymore”
- Exam
  - VA w/o correction: 20/25 right eye (OD), 20/125 left eye (OS)
  - IOP: 10 mmHg OD, 12 mmHg OS
  - Pupils: 5 → 3 mm in both eyes (OU)
  - Confrontation visual fields: temporal loss OD, central scotoma OS

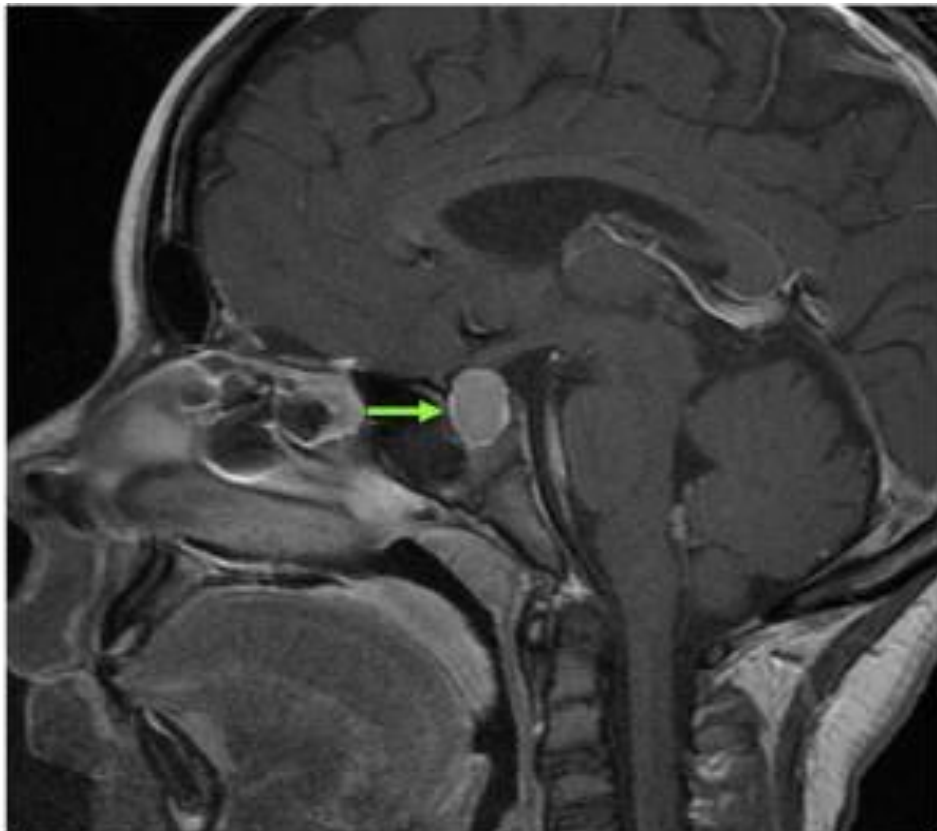
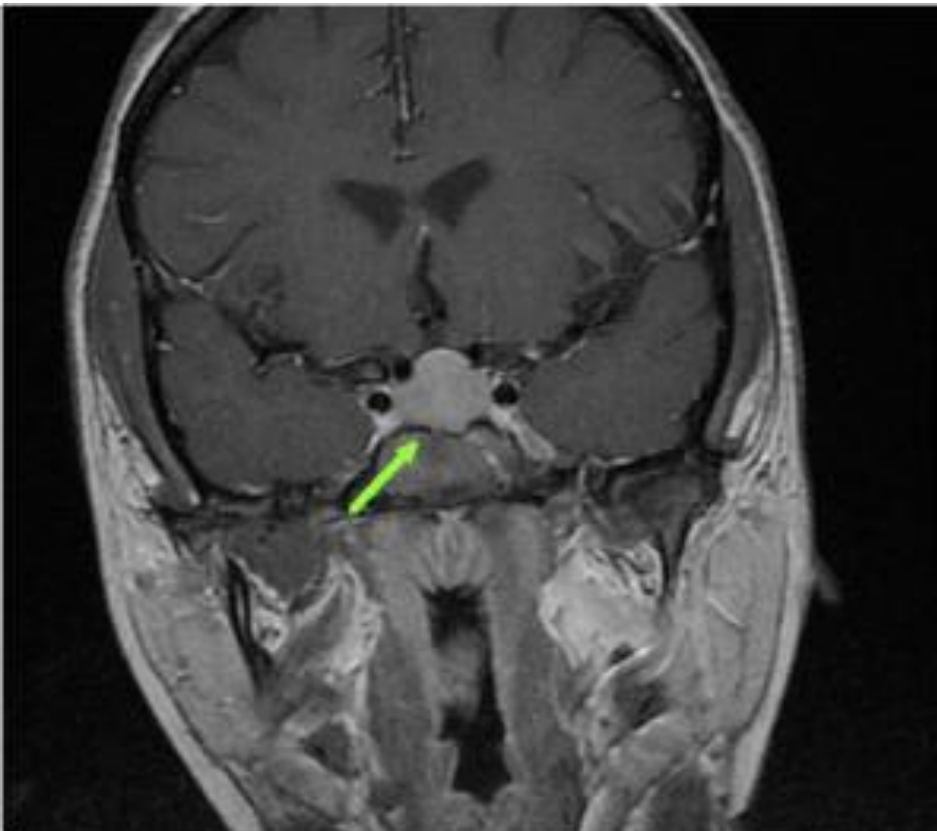


## Plan

- Imaging?
  - CT/MRI
- Labs?
  - ACTH, TSH, FSH, LH, GH prolactin







## Treatment

- Corticosteroids 1 mg/kg/day
- IV dexamethasone 6mg Q6hr x 3 days
- Methylprednisolone 125mg daily
- Switch to oral prednisone after improvement  
1-2 mg/kg qd
- Contact Hem/Onc ASAP





## Bibliography

- Villadolid J, Amin A. Immune checkpoint inhibitors in clinical practice: update on management of immune-related toxicities. *Translational Lung Cancer Research*. 2015;4(5):560-575. doi:10.3978/j.issn.2218-6751.2015.06.06.
- Abdel-Wahab N, Shah M, Suarez-Almazor M. Adverse Events Associated with Immune Checkpoint Blockade in Patients with Cancer: A Systematic Review of Case Reports. *PLOS*. 2016.07.29.
- Jeffrey S. Weber, Katharina C. Kähler, and Axel Hauschild. [Management of Immune-Related Adverse Events and Kinetics of Response With Ipilimumab](#). *Journal of Clinical Oncology* 2012 30:21, 2691-2697
- Horvat T, Adel N, et al. Immune-Related Adverse Events, Need for systemic Immunosuppression, and Effects on Survival and Time to Treatment Failure in Patients with Melanoma Treated with Ipilimumab at MSKCC. *Journal of Clinical Oncology* 33, no. 28 (October 2015) 3193-3198.
- Images provided under license by adobe stock

