

Basic Principles of Cancer Immunotherapy

Augusto Ochoa MD

Director, LSU Cancer Center

New Orleans

Disclosures

- No disclosures
- I **will not** be discussing non-FDA approved indications during my presentation.

William Coley MD (New York)

"Patients with osteosarcomas or breast tumors infected with erysipelas (*Streptococcus pyogenes*) have a longer survival and in some cases have a decrease in tumor size even in distant tumors" - 1893



1862 - 1936

Coley Toxins: *Streptococcus pyogenes*, *Serratia marcescens* and *Staphylococcus epidermidis*. 10% responders

The Premise of Cancer Immunotherapy

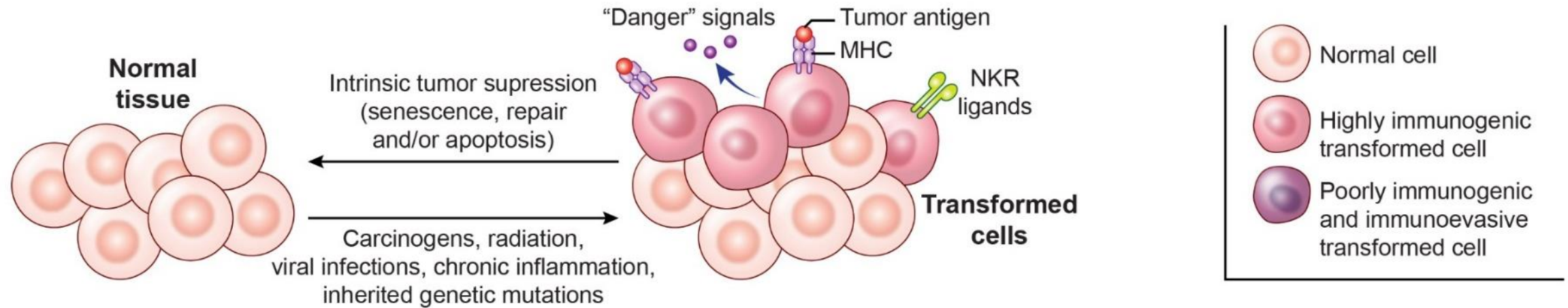
- Normally, the immune system eliminates mutated and/or damaged cells
- To exist, tumors must evolve mechanisms to locally disable and/or evade the immune system.

The goal of immunotherapy is to restore the capacity of the immune system to recognize and reject cancer.

Why Does the Immune System Fail to Eliminate Cancer?

- Cancer cells grow progressively in immunocompetent hosts without evidence of **T cell exhaustion** or **systemic anergy**
- **T cell Exhaustion:** CD8+ T cells often become dysfunctional, entering a state known as exhaustion, during certain chronic infections or when they enter a suppressive tumor microenvironment
- **Systemic Anergy:** A state of immune unresponsiveness. Induced when the T cell's antigen receptor is stimulated, effectively freezing T cell responses pending a "second signal" from the antigen-presenting cell

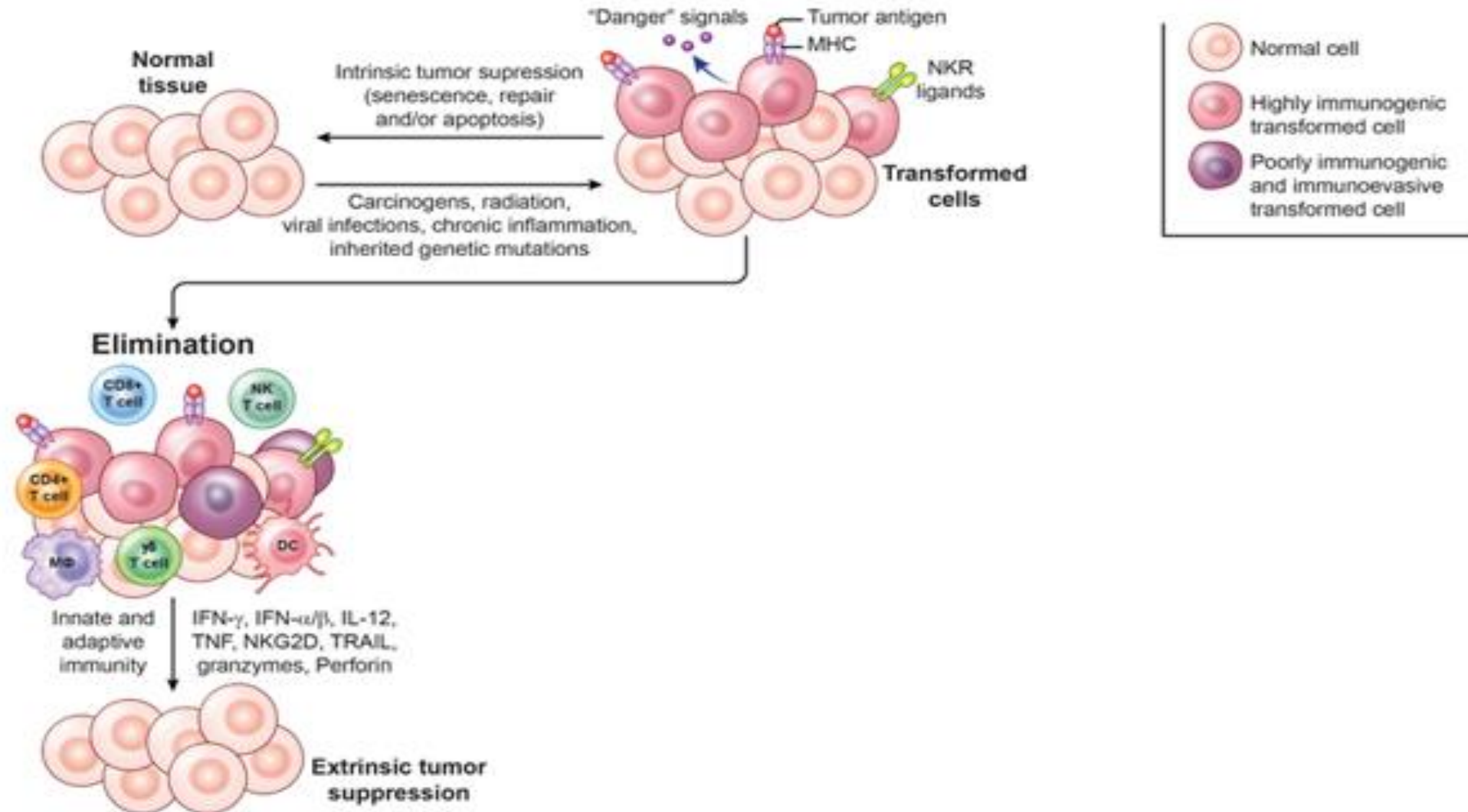
The 3 E's of Cancer Immunoediting



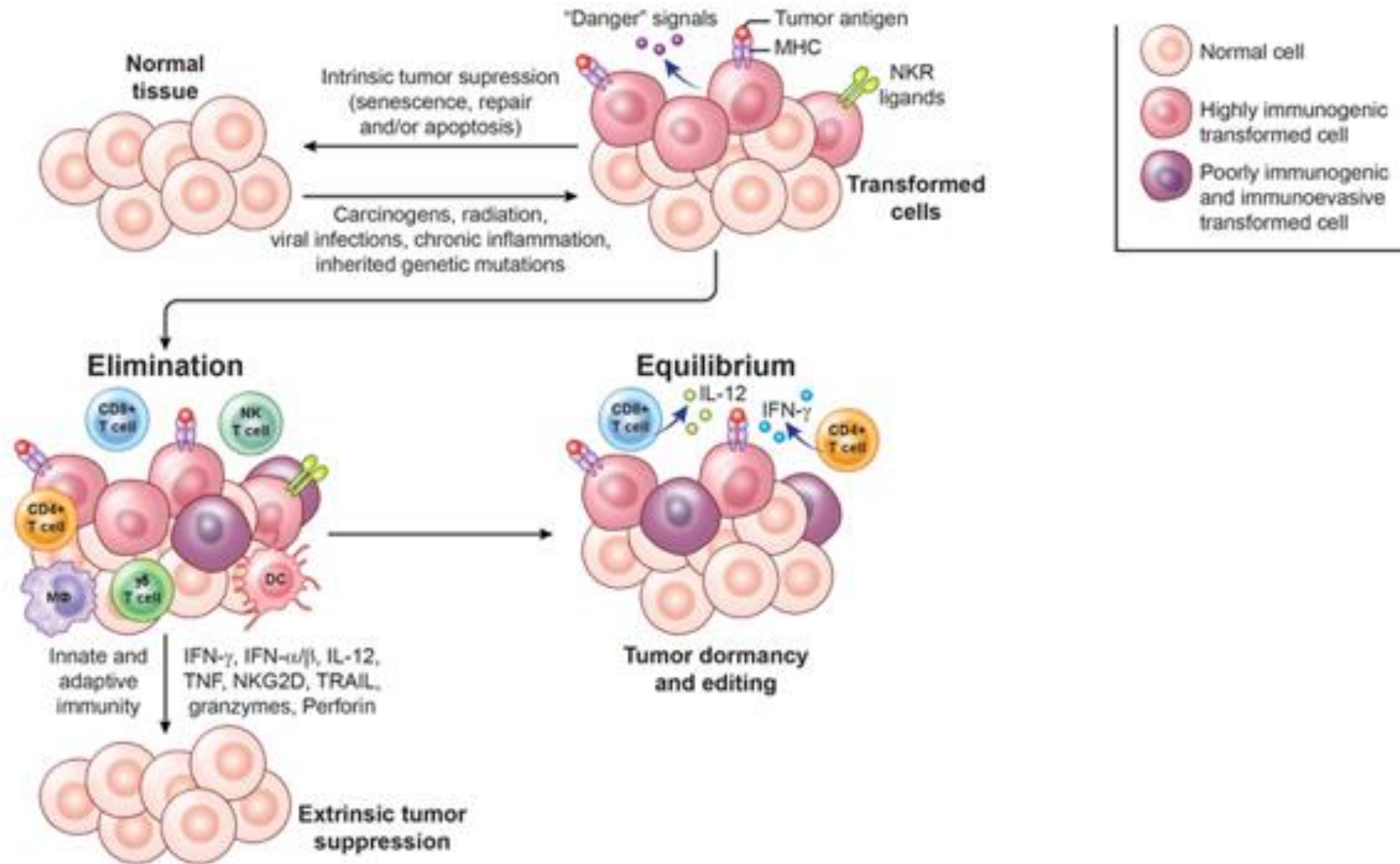
R. Schreiber, L. Old and M. Smyth



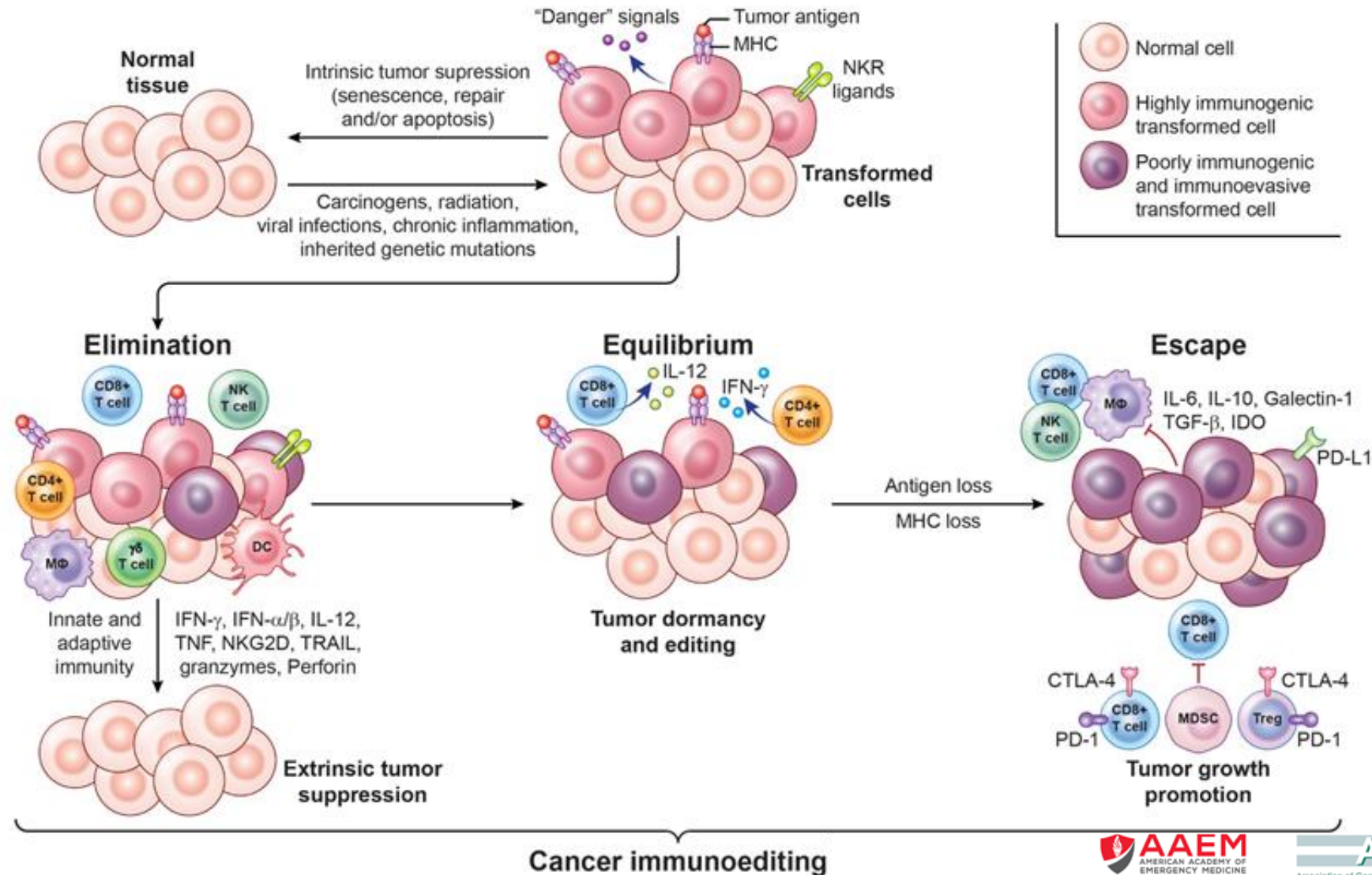
The 3 E's of Cancer Immunoeediting



The 3 E's of Cancer Immunoeediting

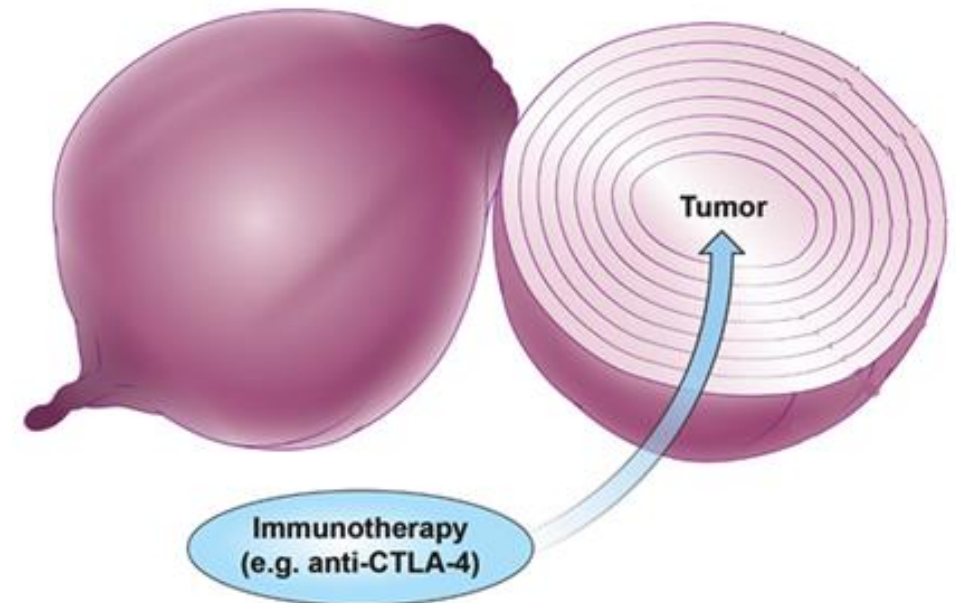


The 3 E's of Cancer Immunoediting

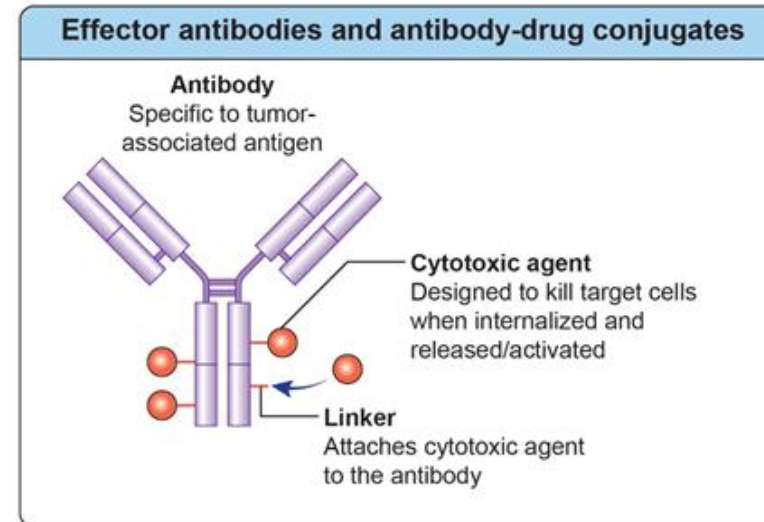
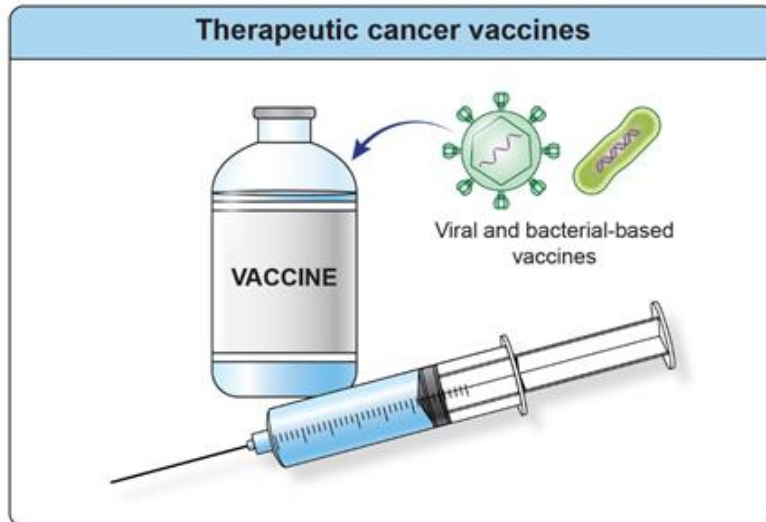
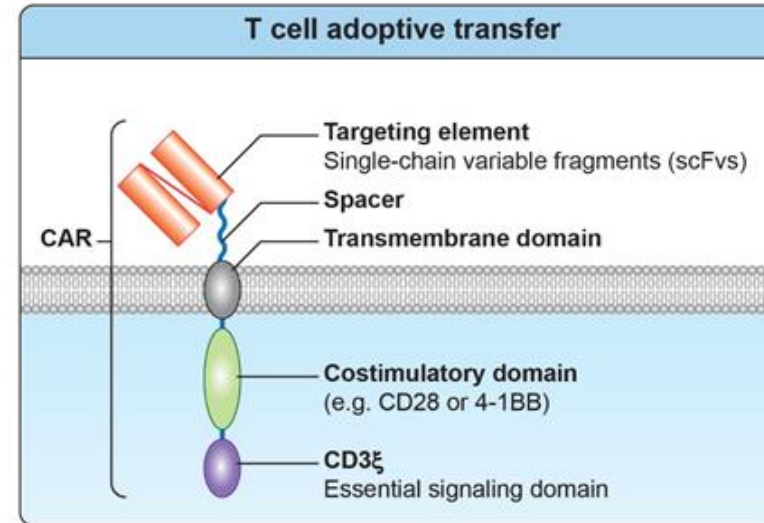
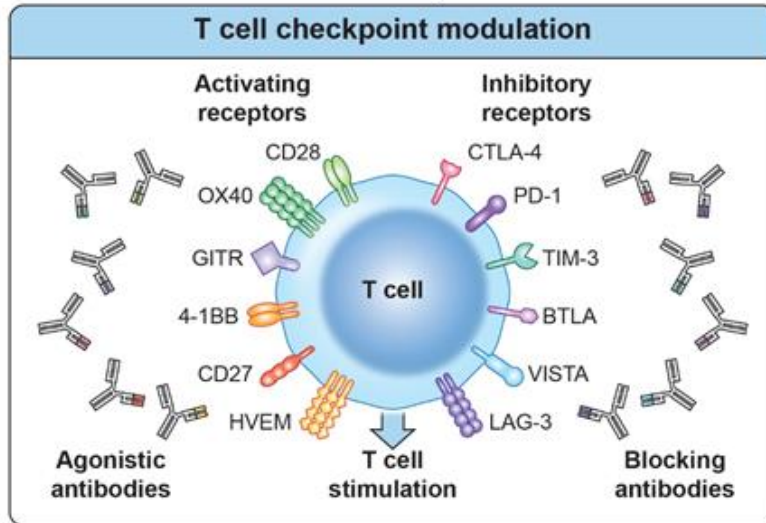


Multi-layered Immunosuppression

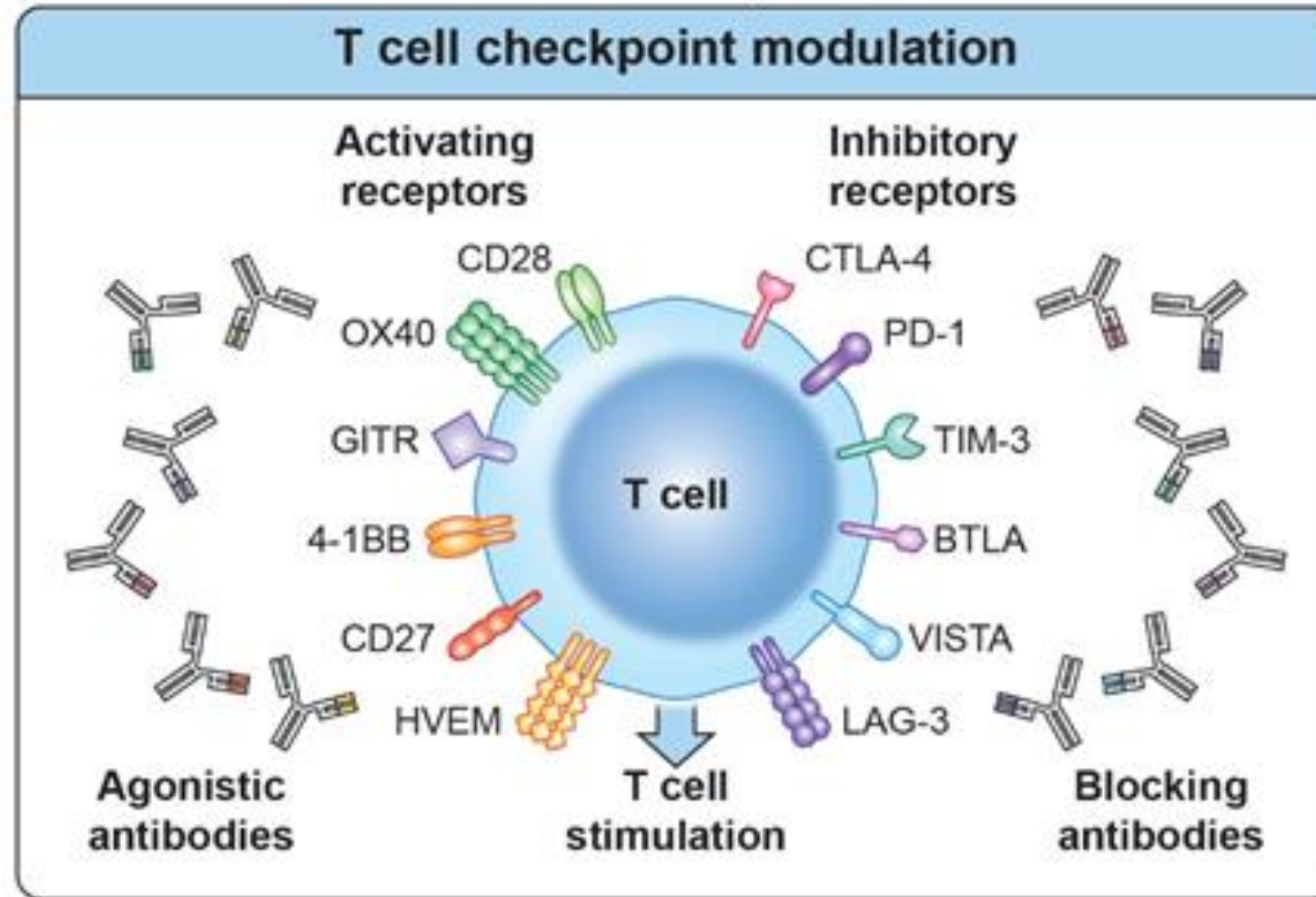
- Tumors insulate themselves with dense layers of immunosuppressive stroma
- Overcoming the many layers of interconnected and often functionally redundant immune suppressive mechanisms represents a daunting challenge for tumor-specific T cells
- Immunotherapy can “peel back” the layers of local immune suppression, thereby restoring the capacity of T cells to eradicate the tumor



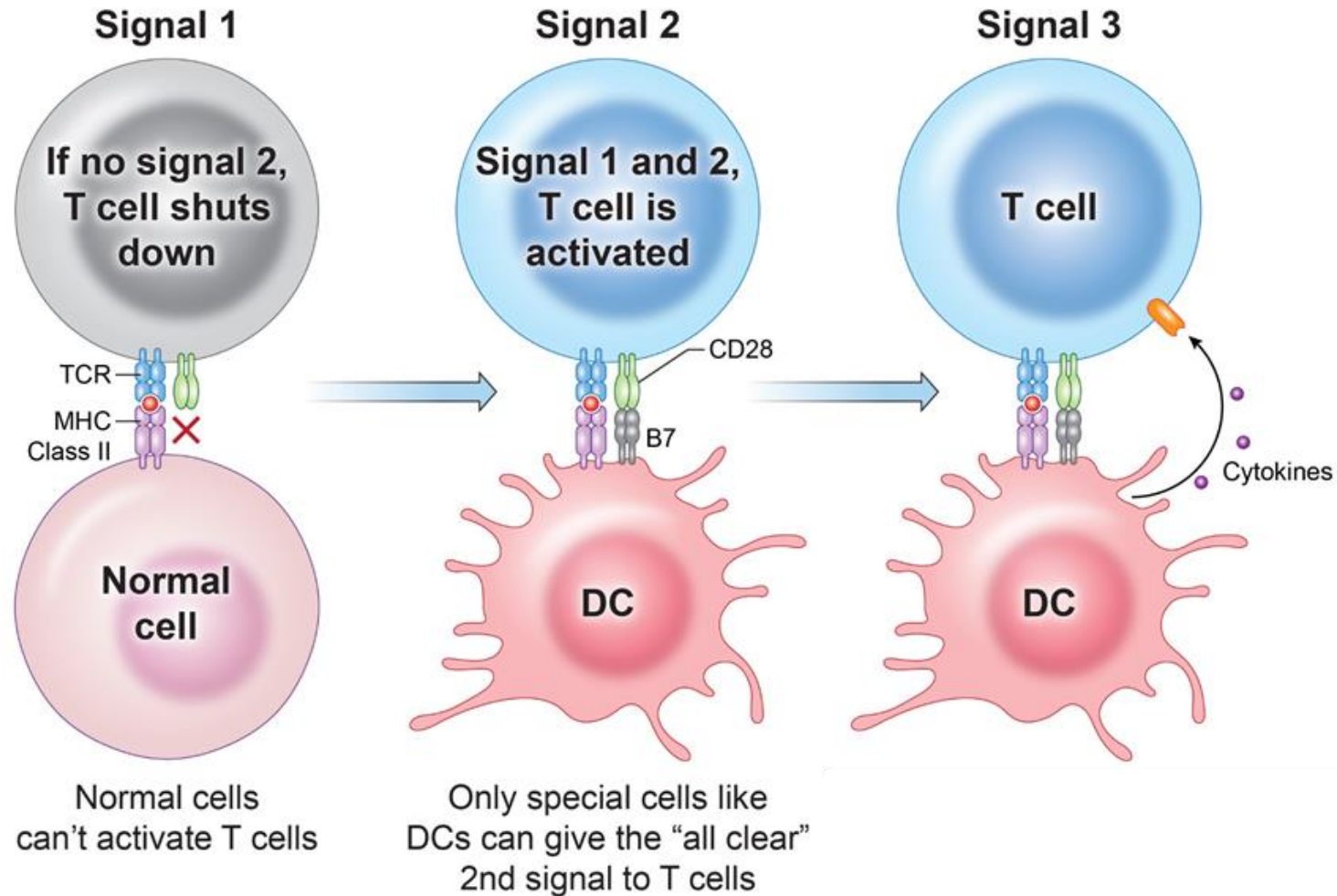
Types of Immunotherapy



T cell Checkpoint Modulation



Antigen-specific T cell Activation



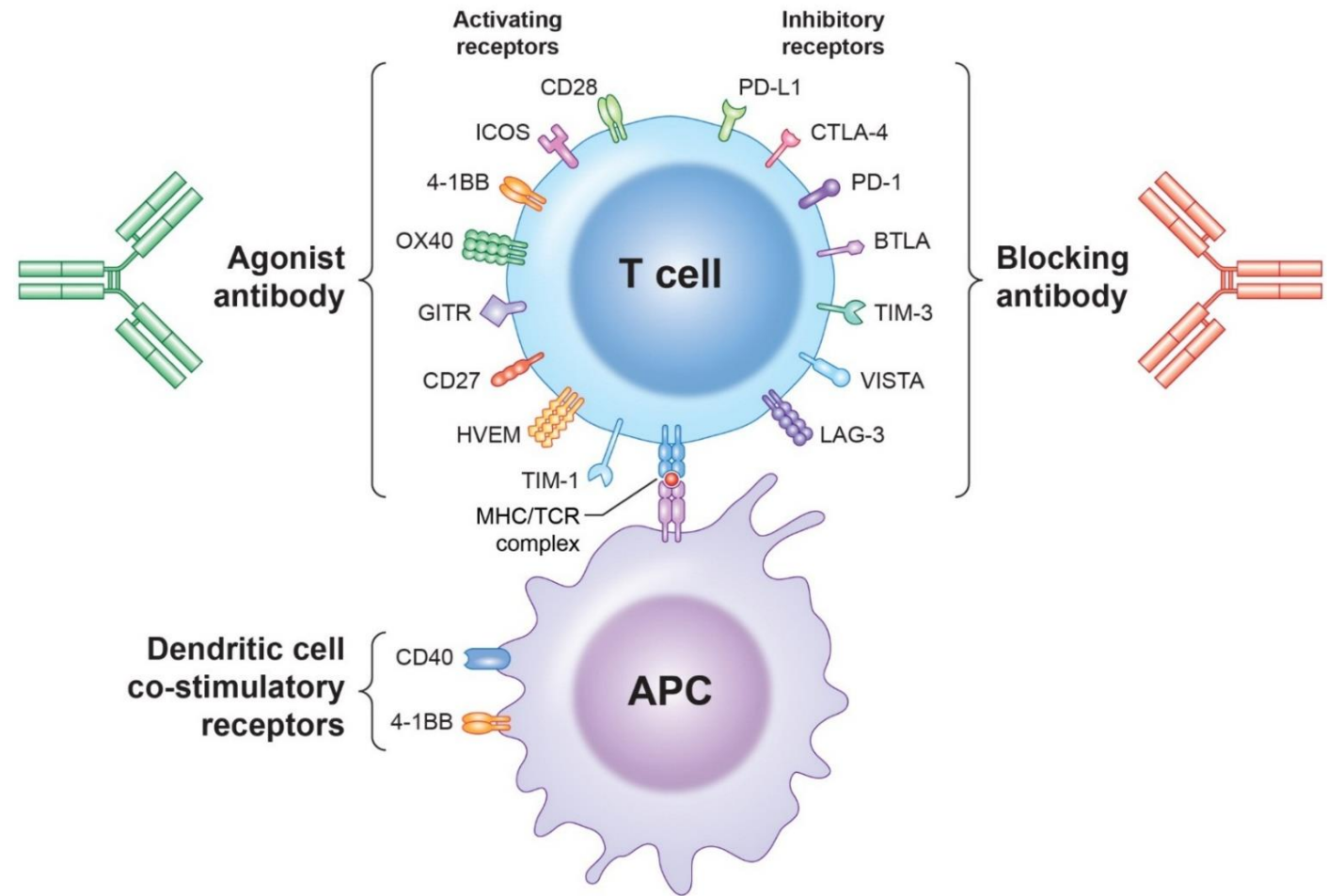
Start the Engine

Put in Gear

Step on the gas

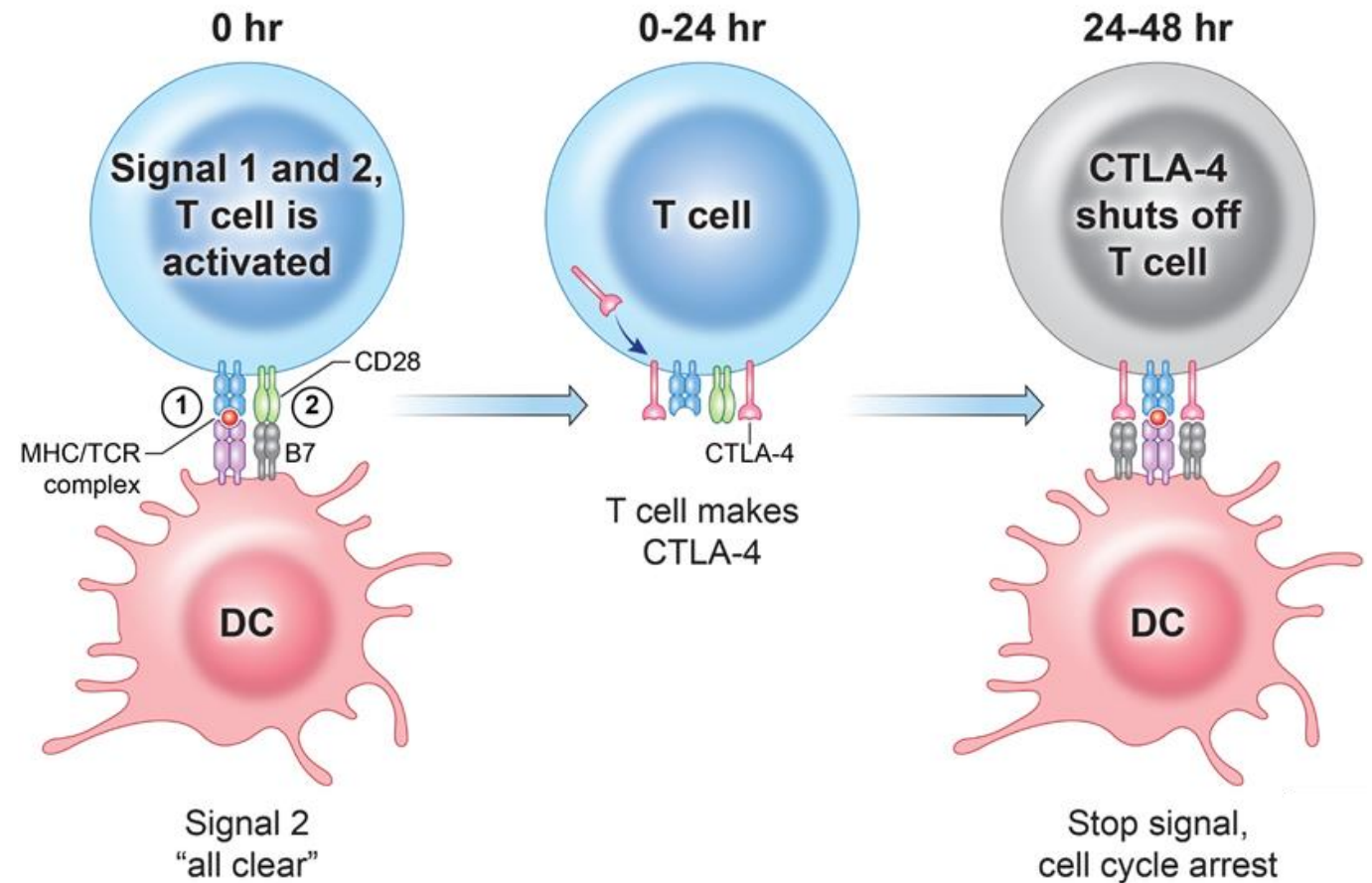
T Cell Checkpoint Modulation

- To exist, tumors must evolve mechanisms to locally disable and/or evade the immune system.
- The goal of T cell checkpoint blockade is to **make T cell “off-switches” inaccessible** to tumor cells, thus restoring tumor-specific immunity.

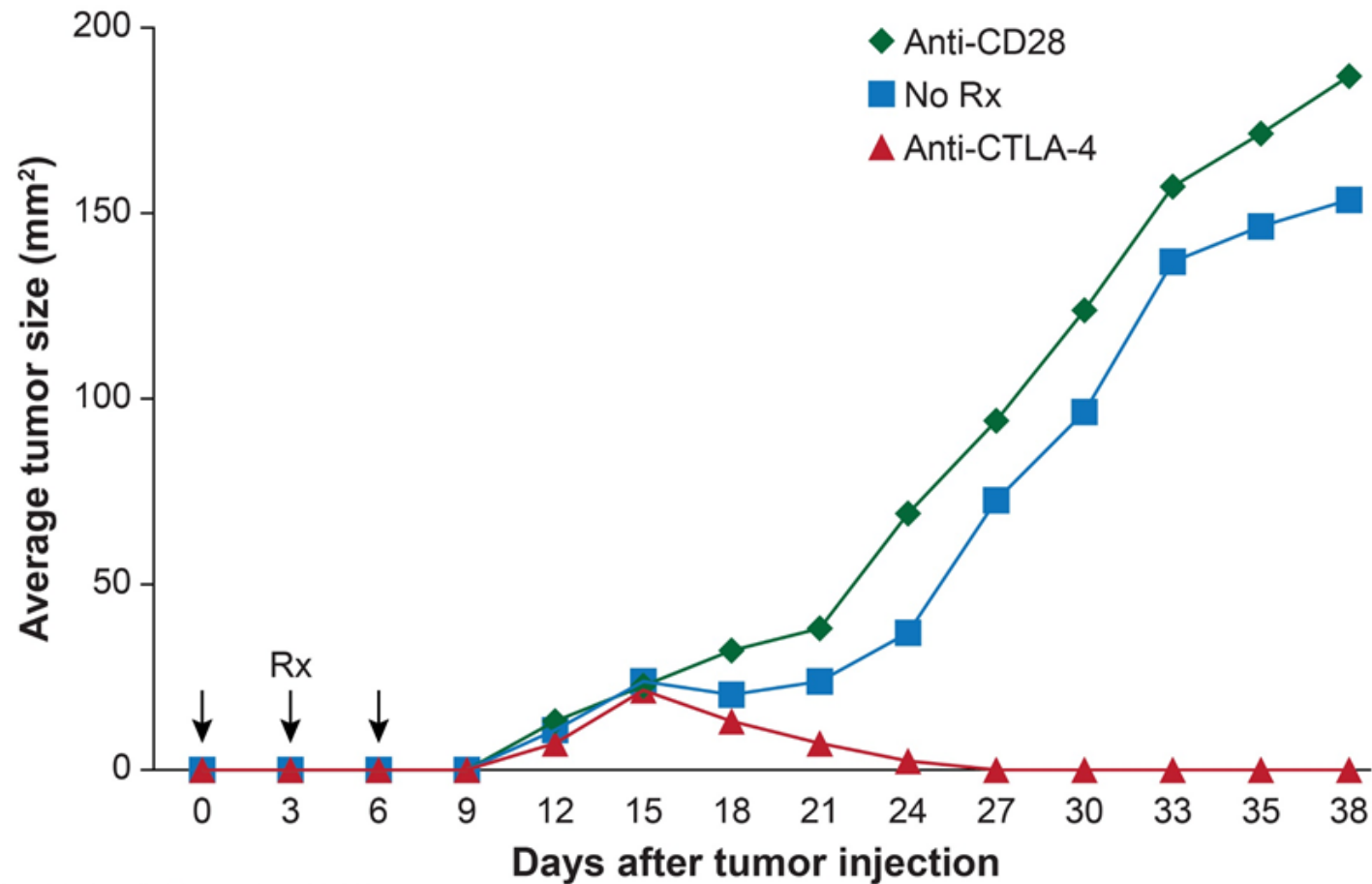


The CTLA-4 Checkpoint

- Cytotoxic T-Lymphocyte Associated Protein 4
- Also known as CD152
- Negative regulator of T cell activation



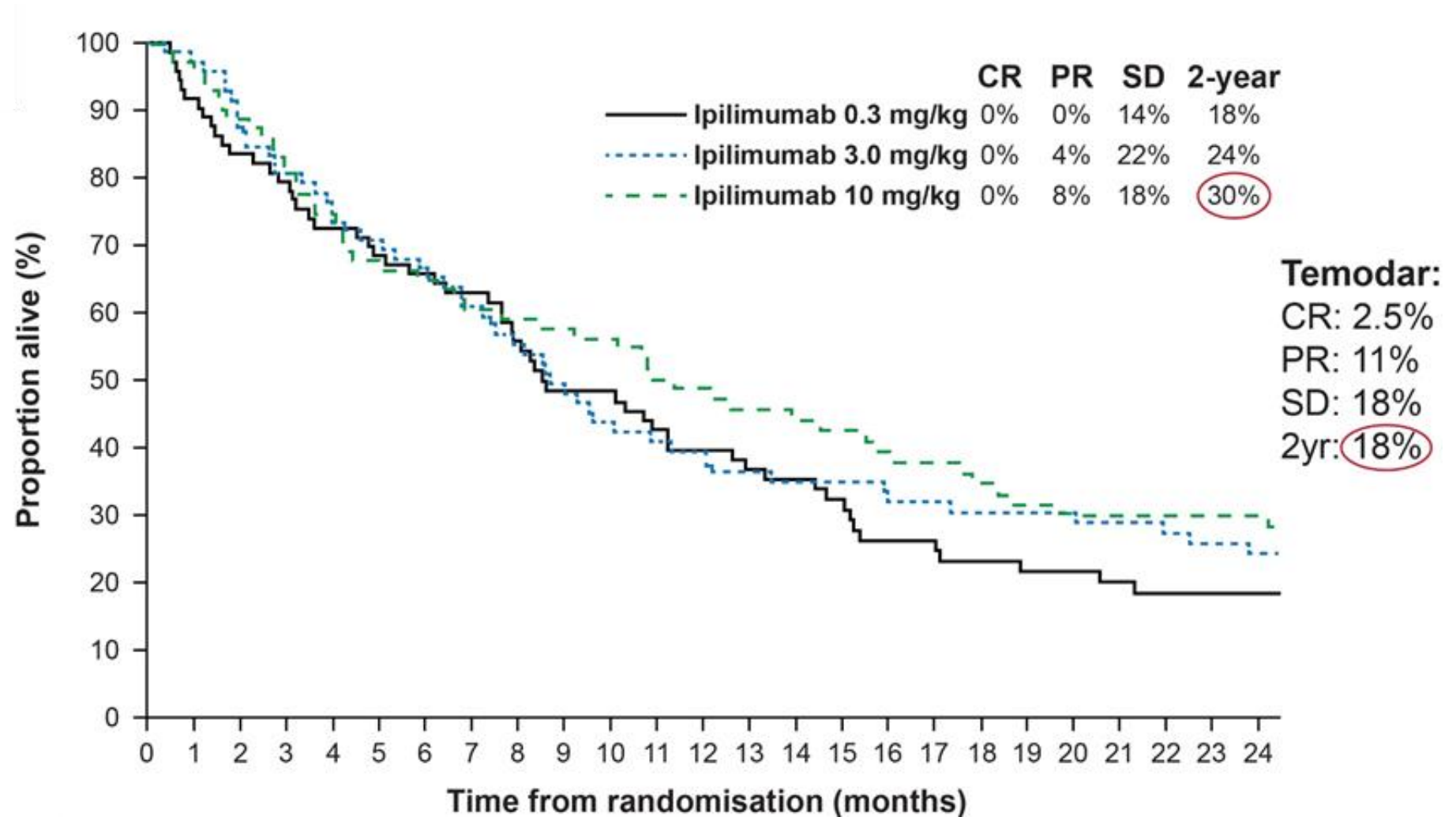
Anti-CTLA-4 induces regression of transplanted colon carcinoma



Leach DR, Krummel MF, Allison JP. 1996.
Enhancement of antitumor immunity by CTLA-4 blockade.
Science. 271(5256): 1734-6.

Ipilimumab (human anti CTLA-4)

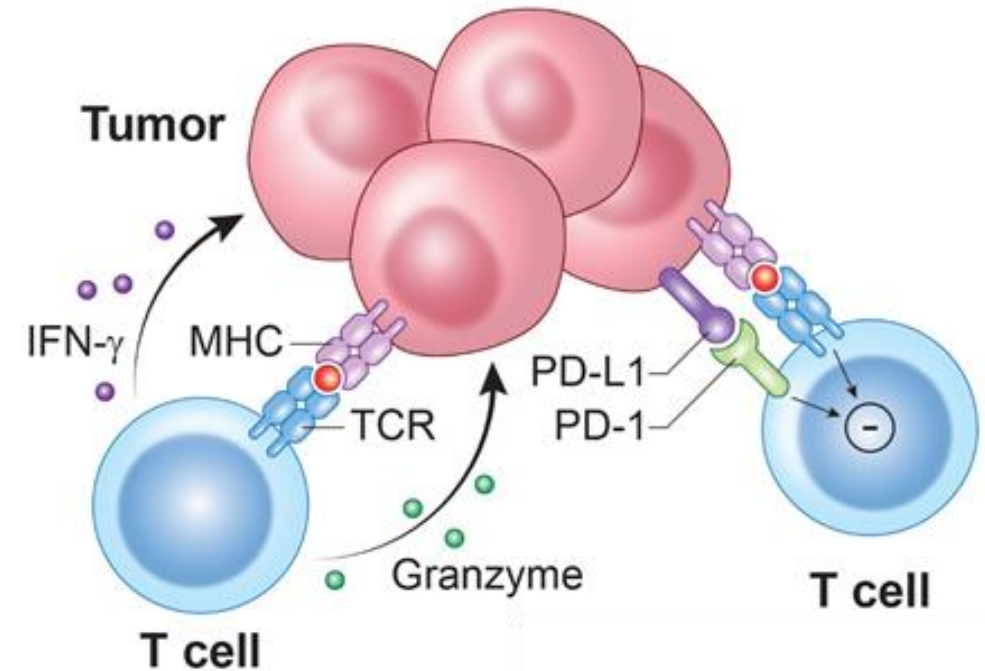
Granted FDA approval
for treatment of patients
with metastatic
melanoma in 2010



Wolchok et al. Lancet Oncol 2010

The PD-1/PD-L1 Checkpoint

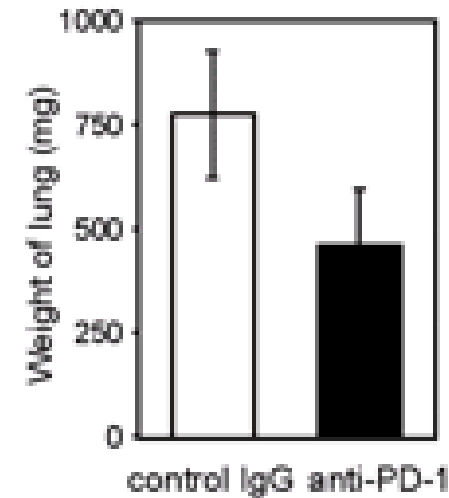
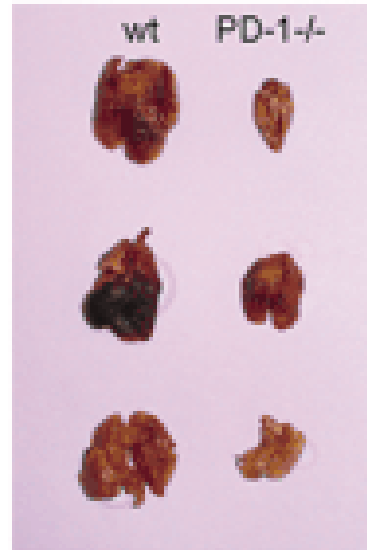
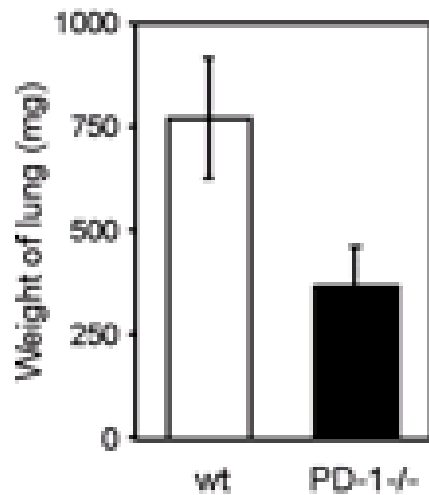
- Promotes T cell tolerization through inhibiting activation signaling
- T cell PD-1 interacts with PD-L1 and PD-L2
- Many cells express PD-L1/PD-L2 and can suppress T cell activation
- Tumors express PD-L1 through two primary mechanisms
 - TIL production of IFN- γ
 - Oncogenic signaling pathways



Francisco, L. et al. *Immunol Rev.* 2010. 236: 219.
Pardoll, D.M. *Nat Rev Cancer.* 2012. 12: 252.

Anti-PD-1 Slows Tumor Growth in Pre-clinical Models

- PD-1 deletion or inhibition reduced CT26 colon cancer cell growth in BALB/c mice



Iwai et al. Internat. Immunol 2004

Nobel Prize in Medicine 2018

"for their discovery of cancer therapy by inhibition of negative immune regulation."



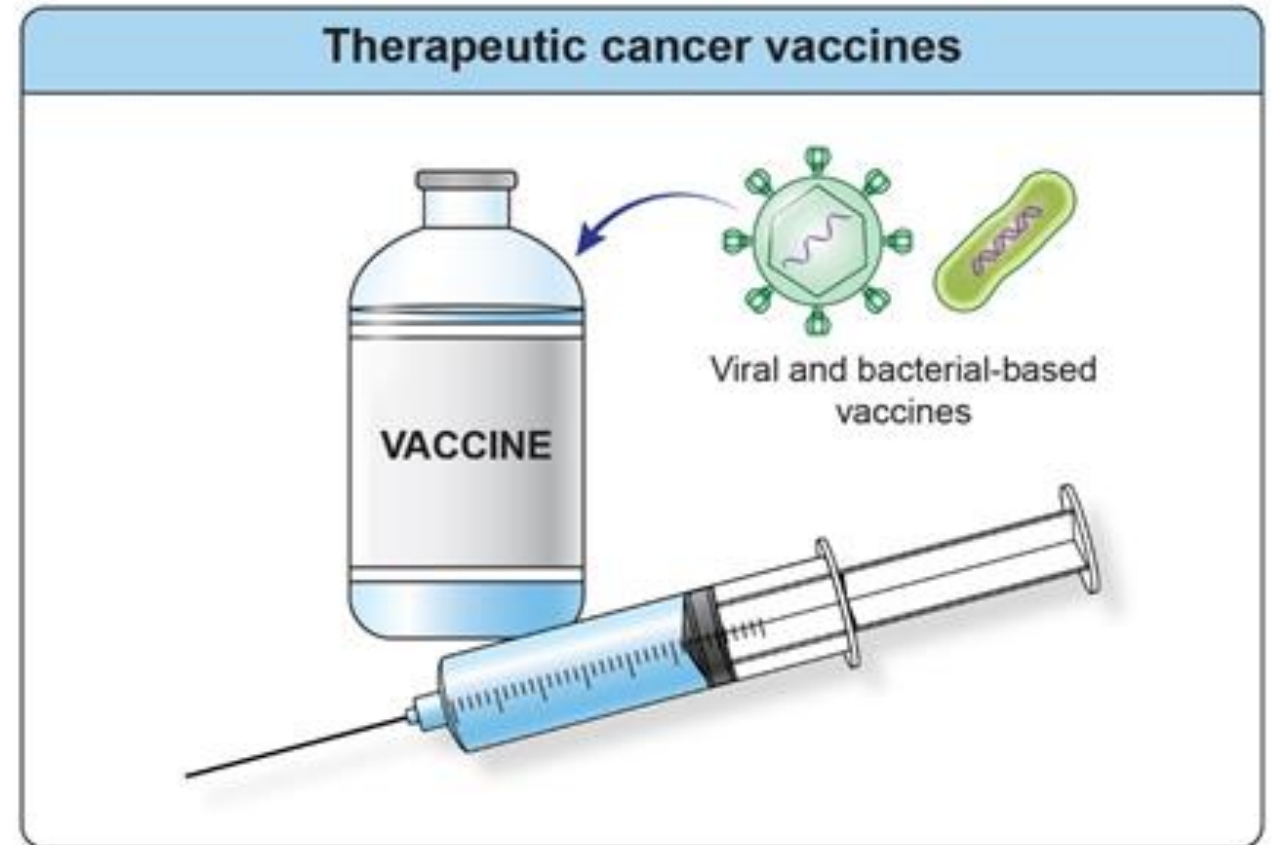
James Allison PhD – USA
CTLA-4








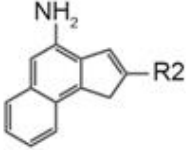
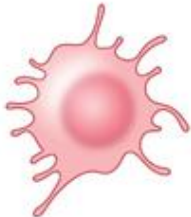
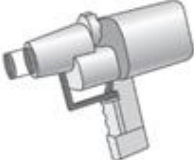
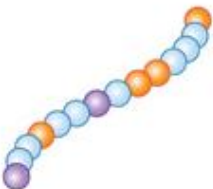



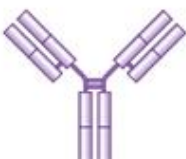

Tasuku Honjo PhD – Japan
PD-1

Therapeutic Cancer Vaccines

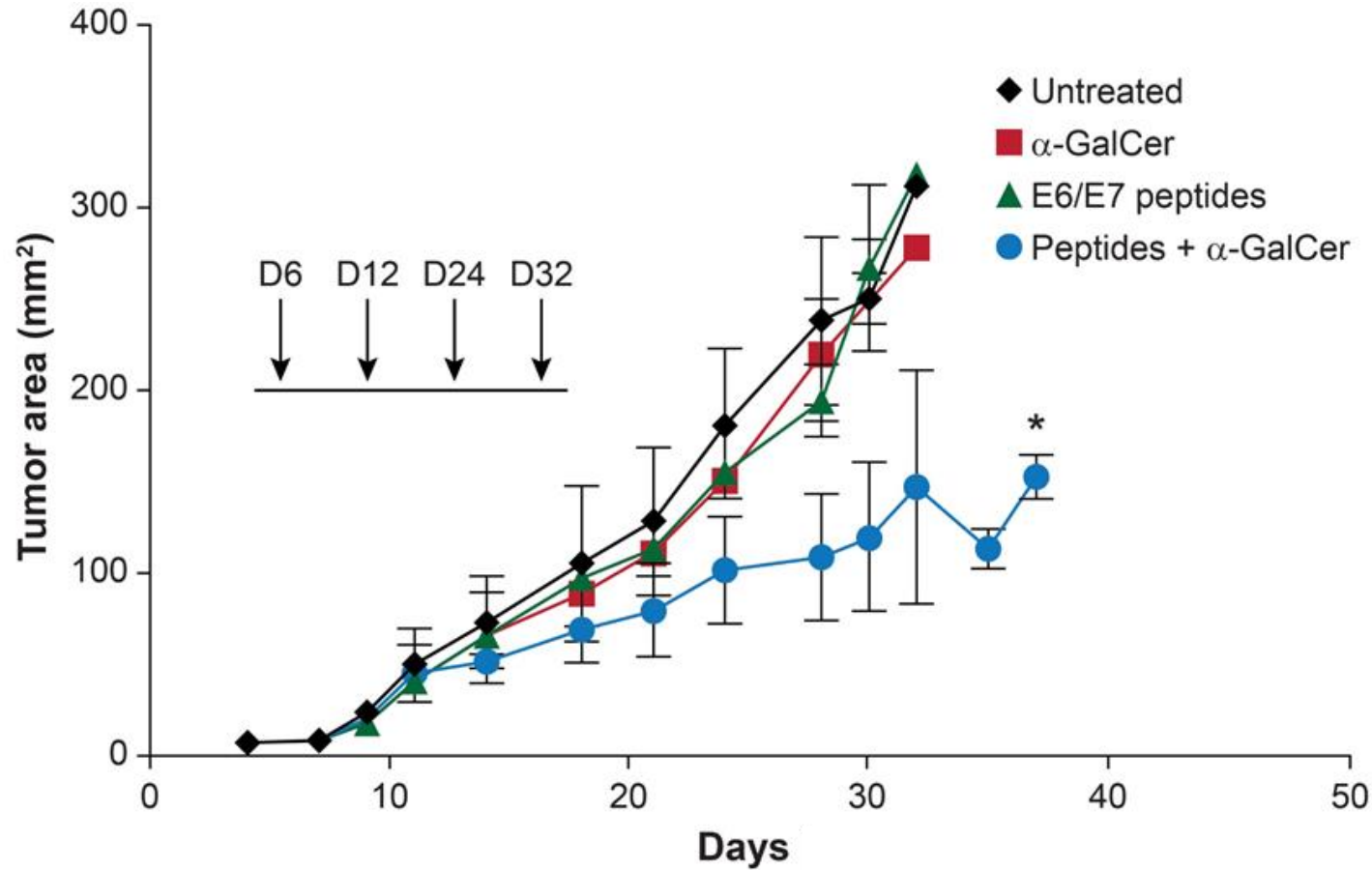
- The goal of therapeutic cancer vaccination is to increase the immunogenicity of tumor antigens in order to generate a high frequency of tumor-specific T cells.



Components of a Cancer Vaccine

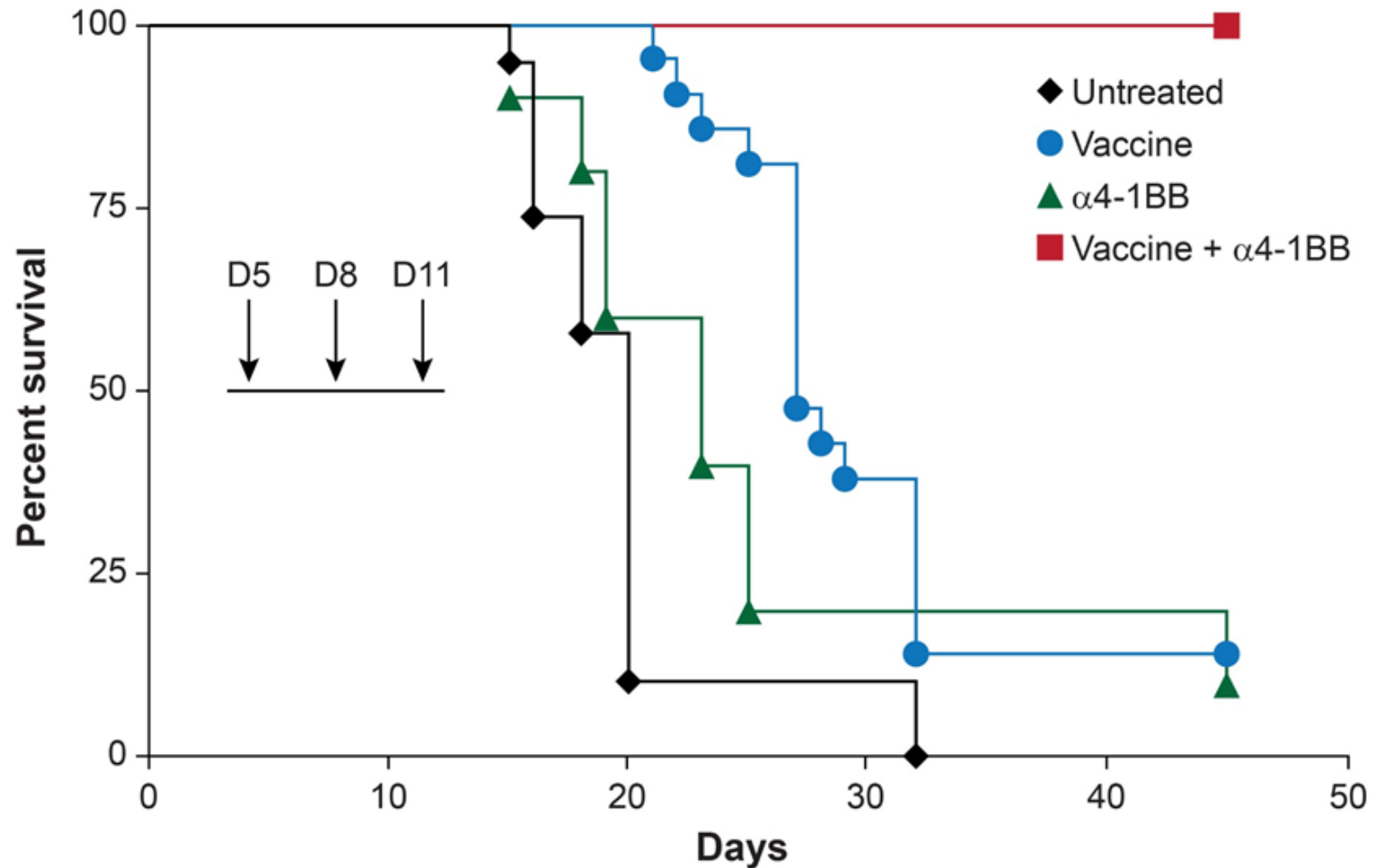
Antigen	Adjuvant	Vector	Vehicle
	 Emulsifiers		 Injection
	 Innate agonists		 Gene gun
	 Cytokines		 Systemic infusion
	 Antibodies		 Nasal spray

An intra-nasal HPV E6/E7: α -GalCer vaccine slows growth of TC-1 tumors



Shailbala Singh

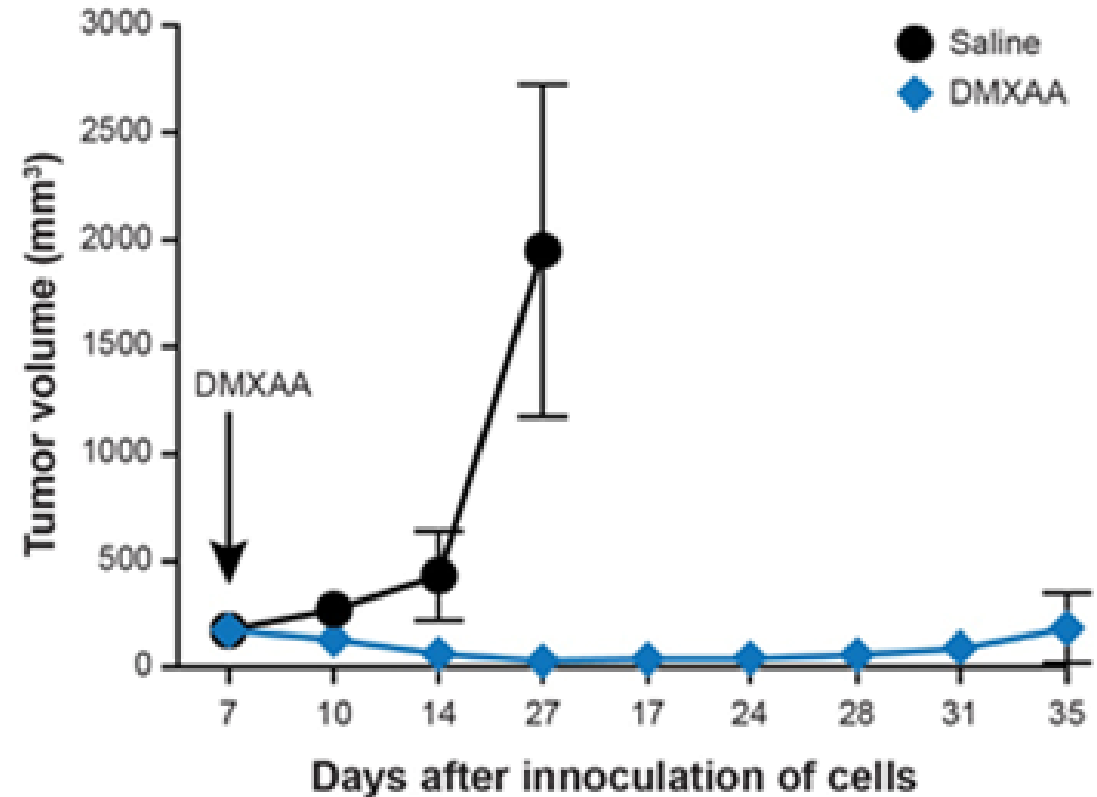
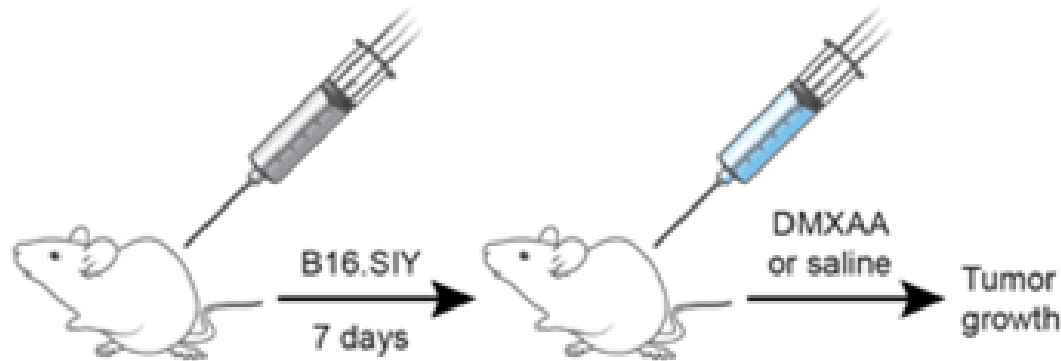
4-1BB agonist antibody and HPV E6/E7 vaccine synergize in curing TC-1 Tumors



Todd Bartkowiak, M.S.

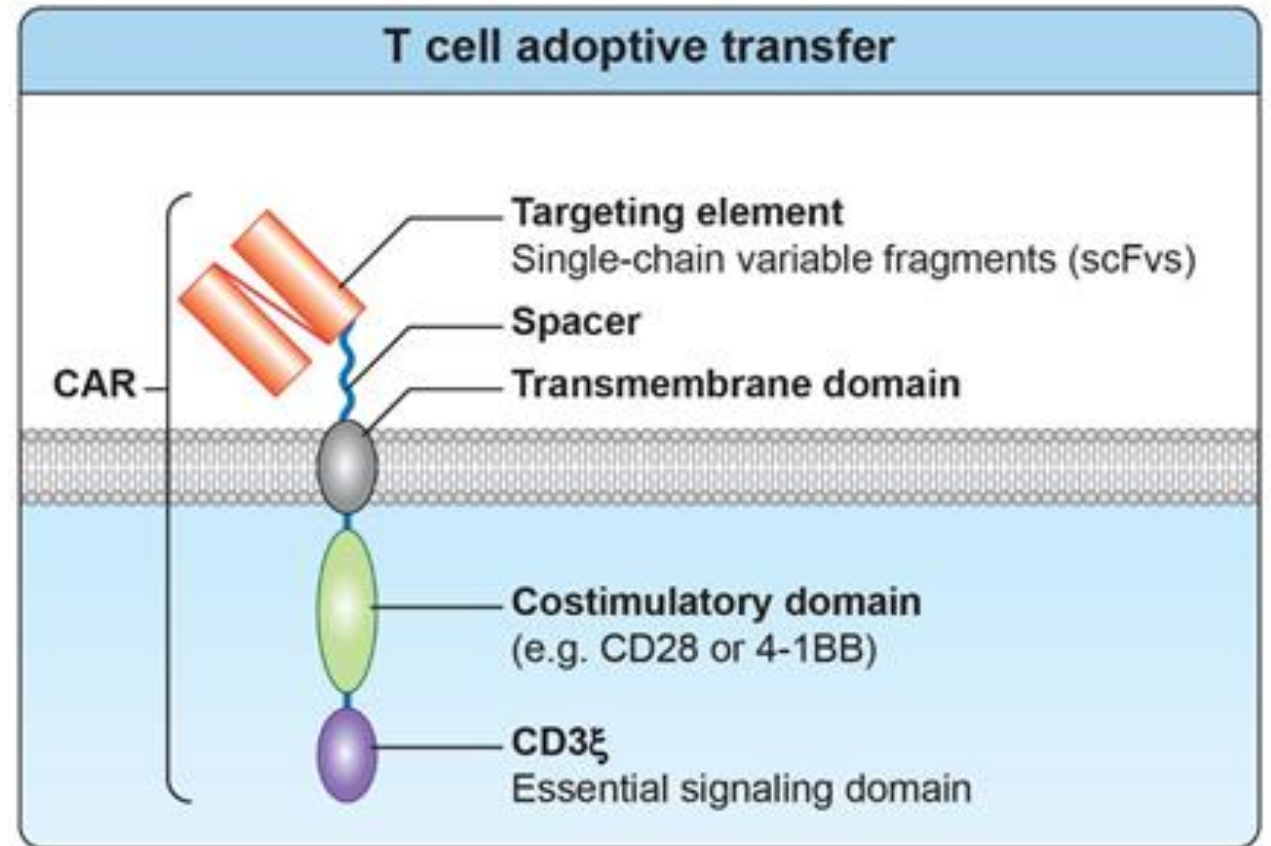
Intratumoral Injection of Innate Immune Agonists: *Direct Vaccination Approach*

- Intratumoral DMXAA (mouse STING agonist) triggers rejection of B16 melanoma

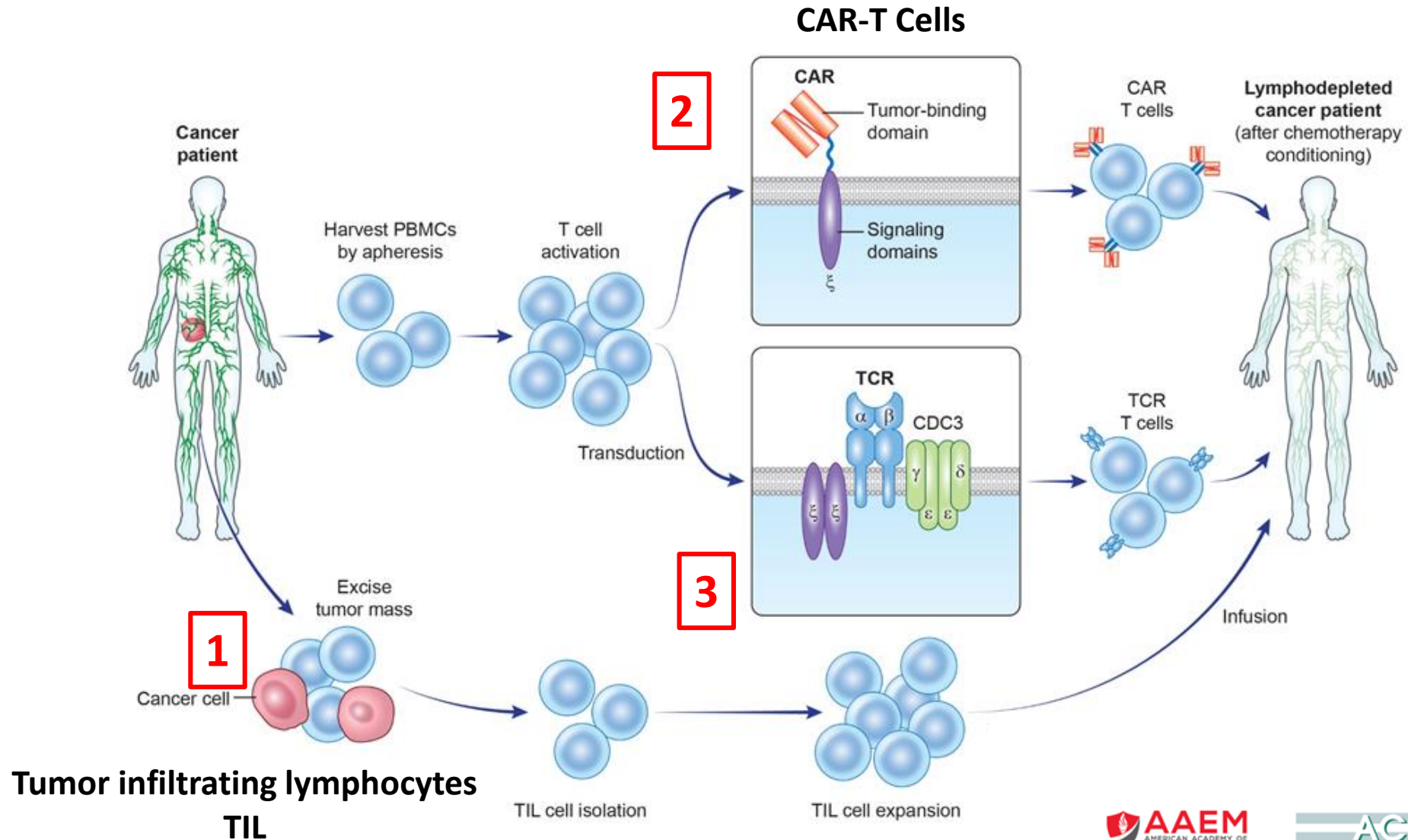


Adoptive Cell Transfer

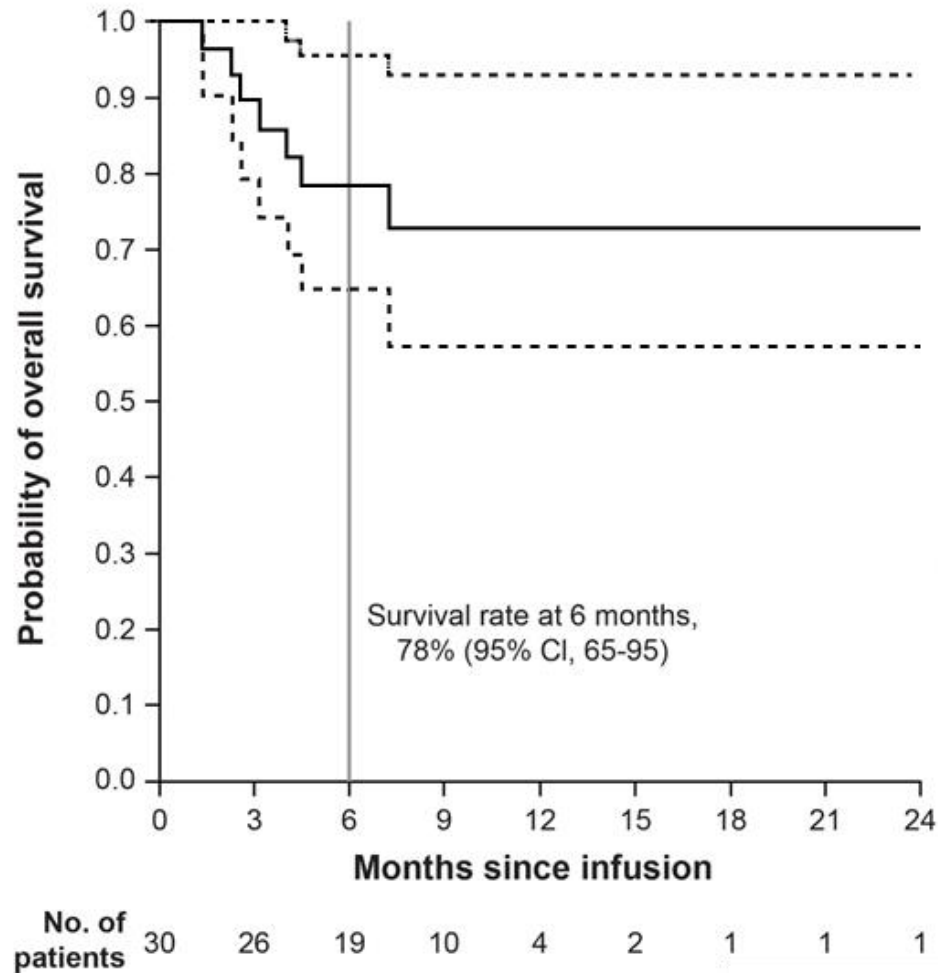
- The goal of adoptive cell transfer is to overwhelm the tumor with a higher frequency of tumor-specific immune cells and/or engineer immune cells to target cancer



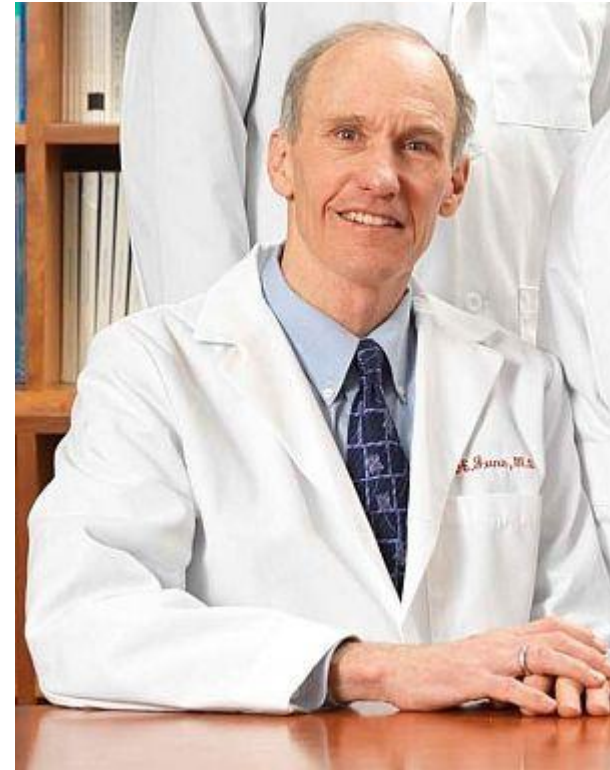
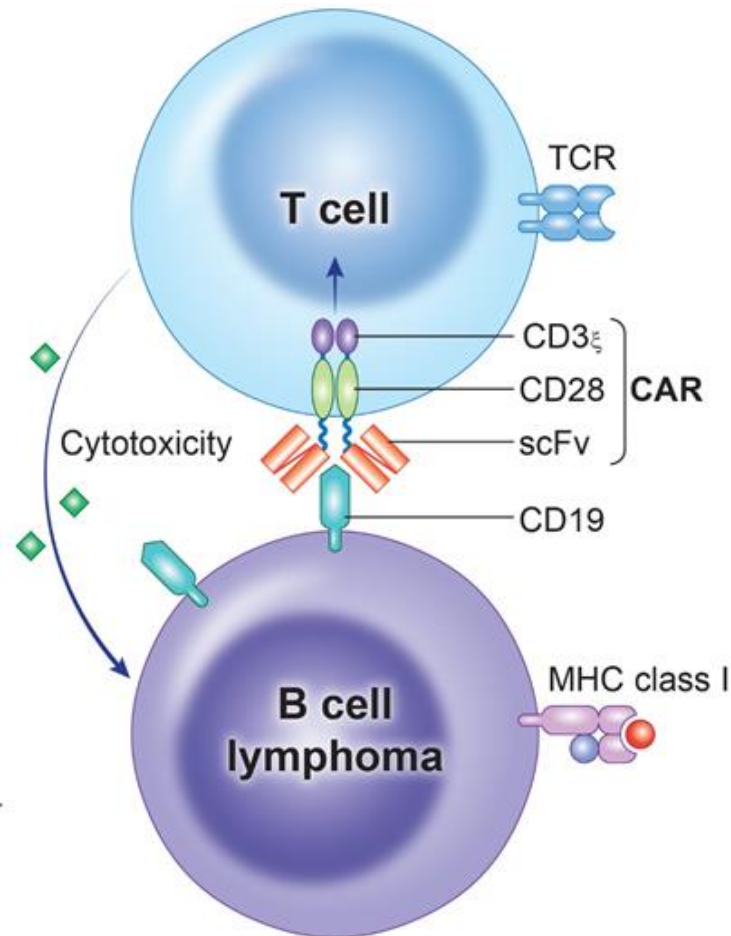
Adoptive Cell Therapy Process



CD19 CAR T Cell Therapy for Relapsed B Cell ALL



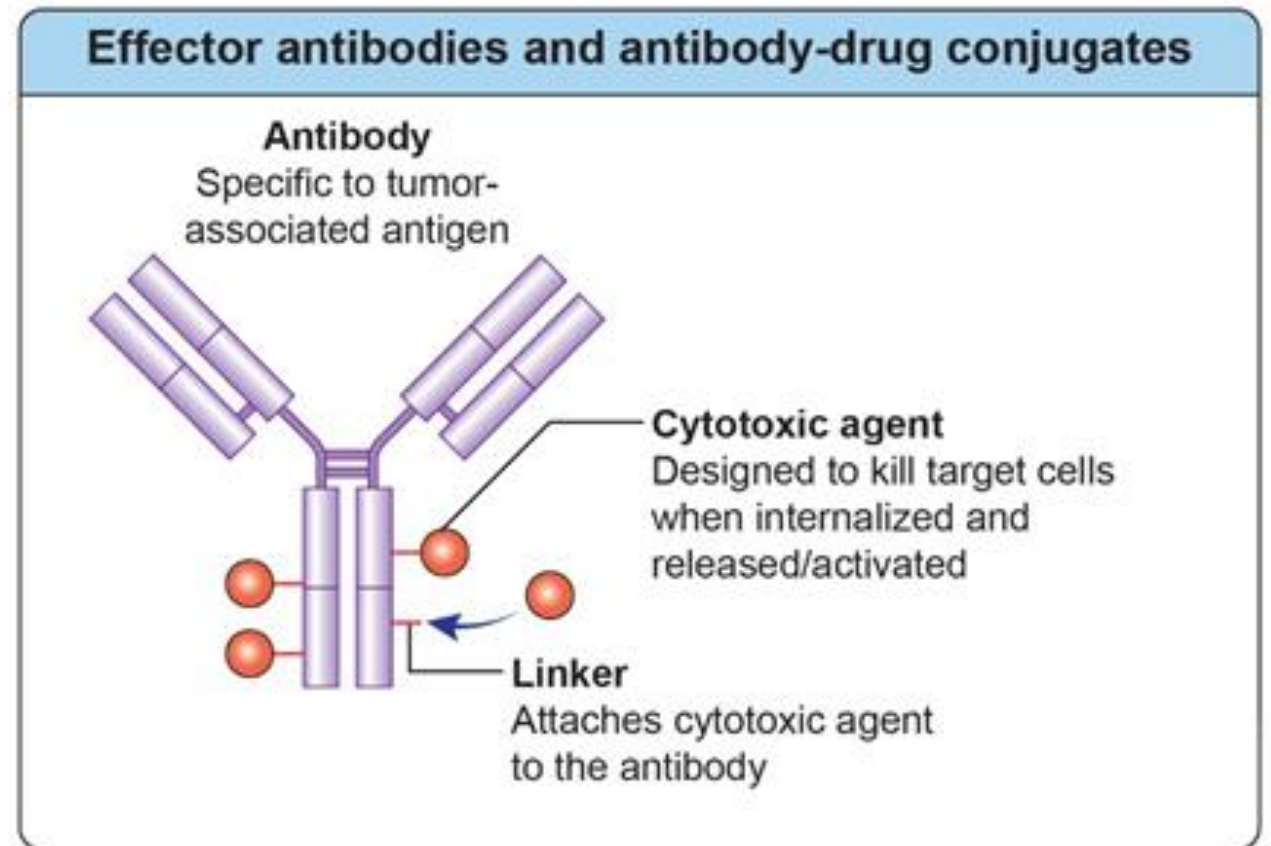
Maude S, Frey N, Shaw P, Aplenc R, Barrett D, Bunin N, Chew A, Gonzalez V, Zheng Z, Lacey S, et al. 2014. Chimeric antigen receptor T cells for sustained remissions in leukemia. The New England Journal of Medicine. 374(10): 998.



Carl June DVM, MD

Effector Antibodies and Antibody-drug Conjugates (ADCs)

- The goal of effector antibodies is to specifically target and kill tumor cells using innate mechanisms which are difficult to evade or through delivery of cytotoxic agents

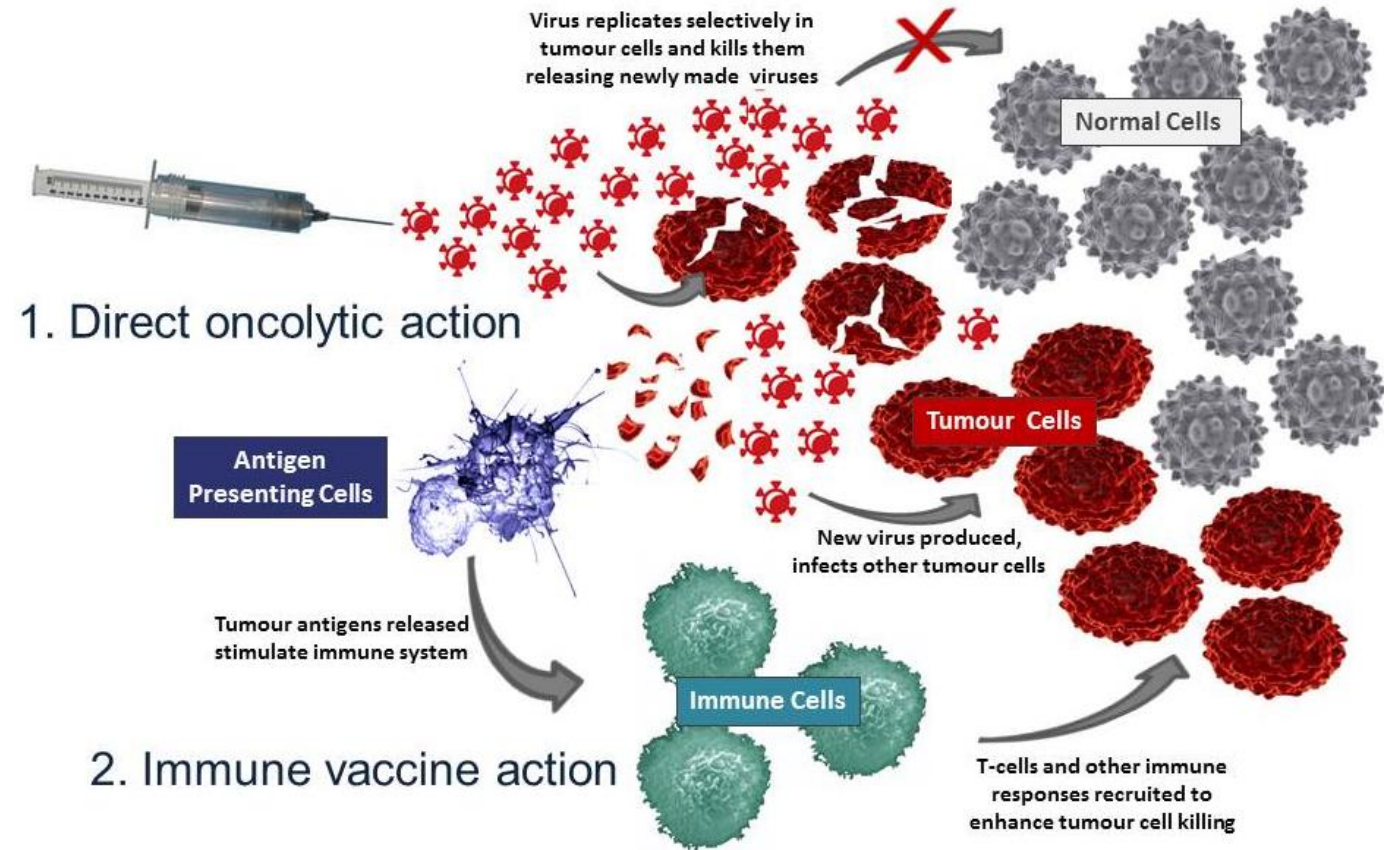


Key ADC/Antibody Principles

- **Specificity:** The more tumor specific the target antigen is, the higher the agent can be dosed without limiting toxicity
- **Internalization:** The target tumor surface protein must internalize to deliver the toxin – it should do so frequently and to a suitable endosomal compartment
- **Stability:** The toxin must remain inert and tethered to the antibody until it is delivered to its target cell

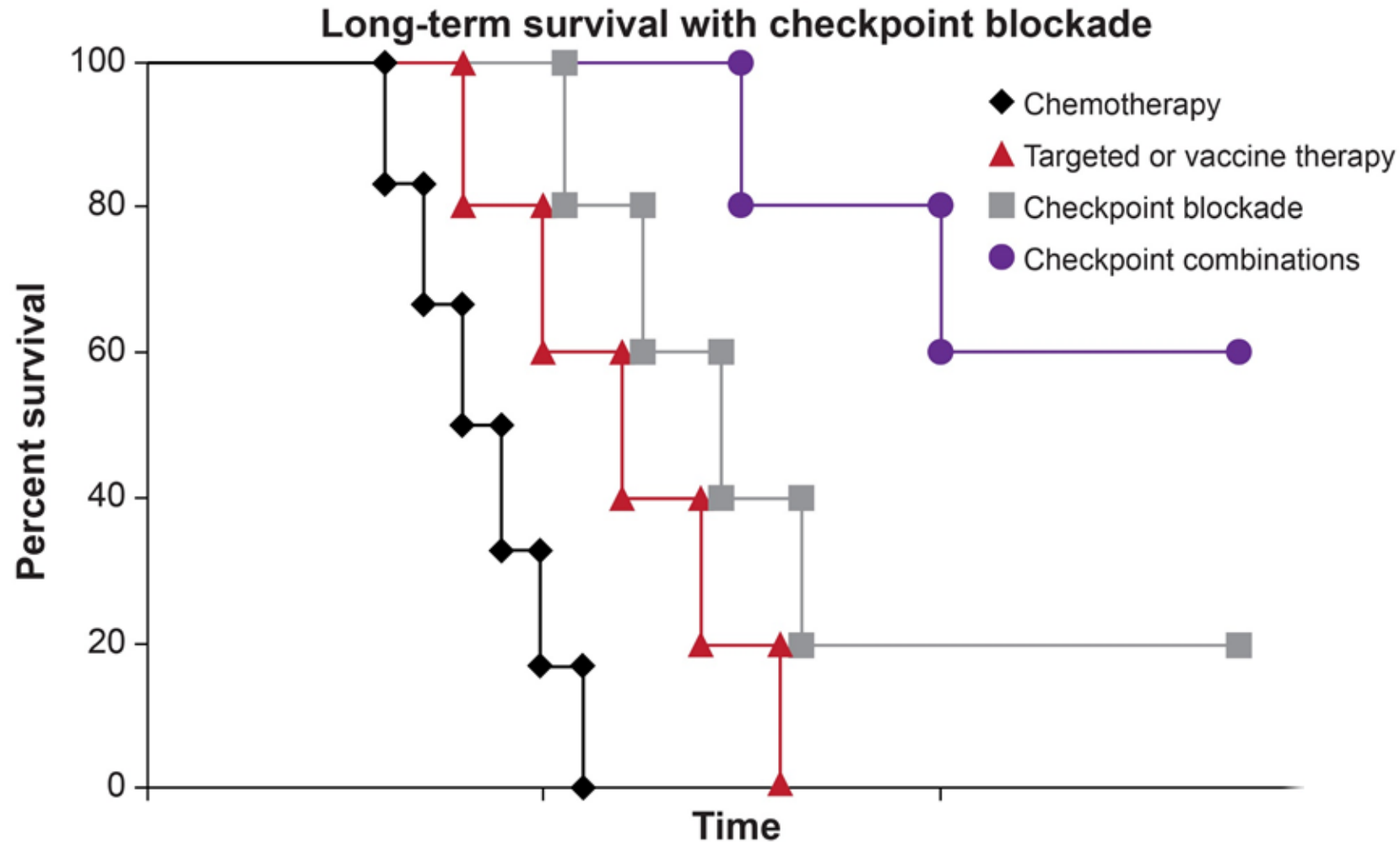
Oncolytic Viruses

- The goal of an oncolytic virus is to specifically target and kill tumor cells through viral replication



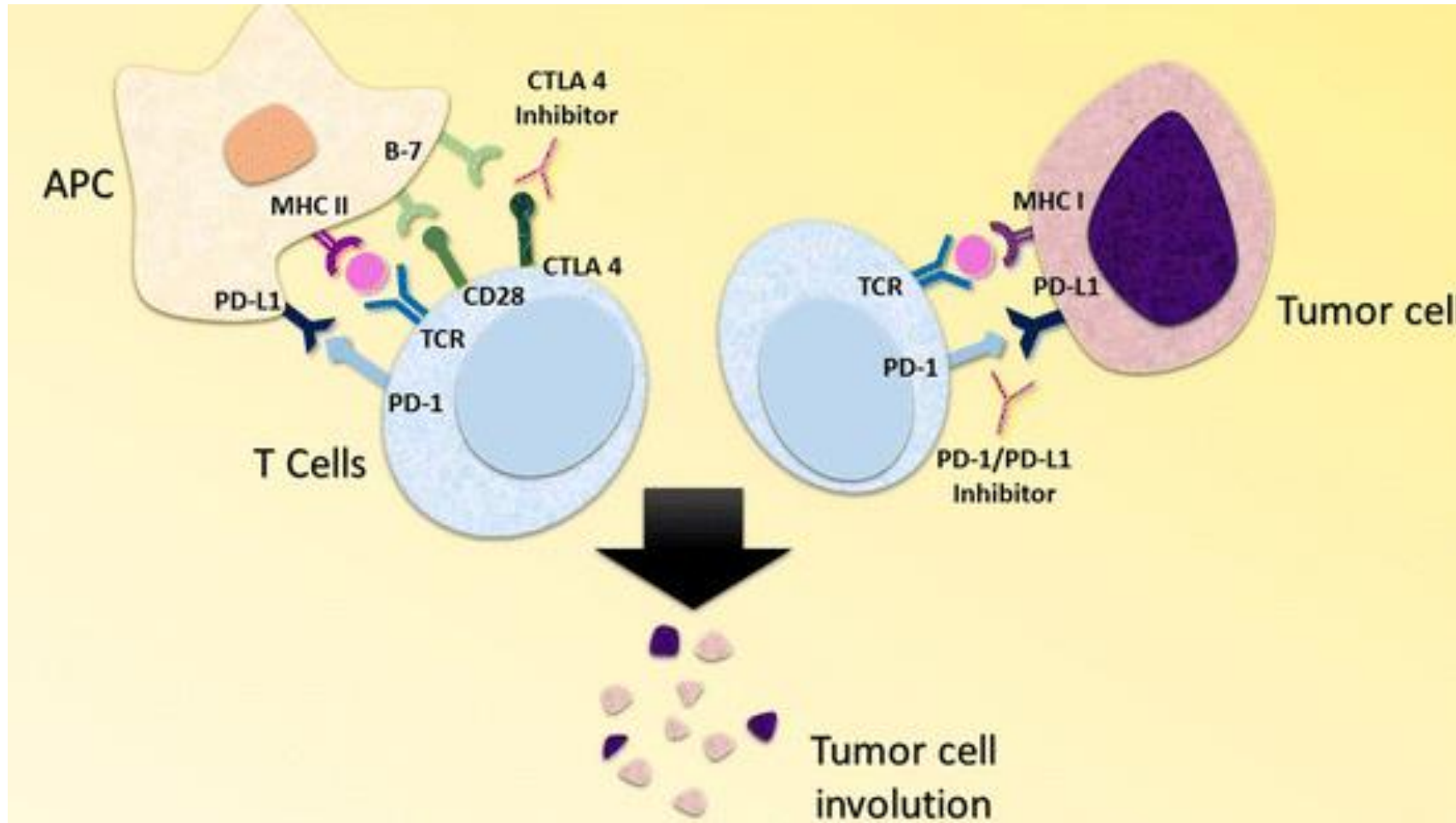
dddmag.com

Combination Immunotherapies



Combination Immunotherapies

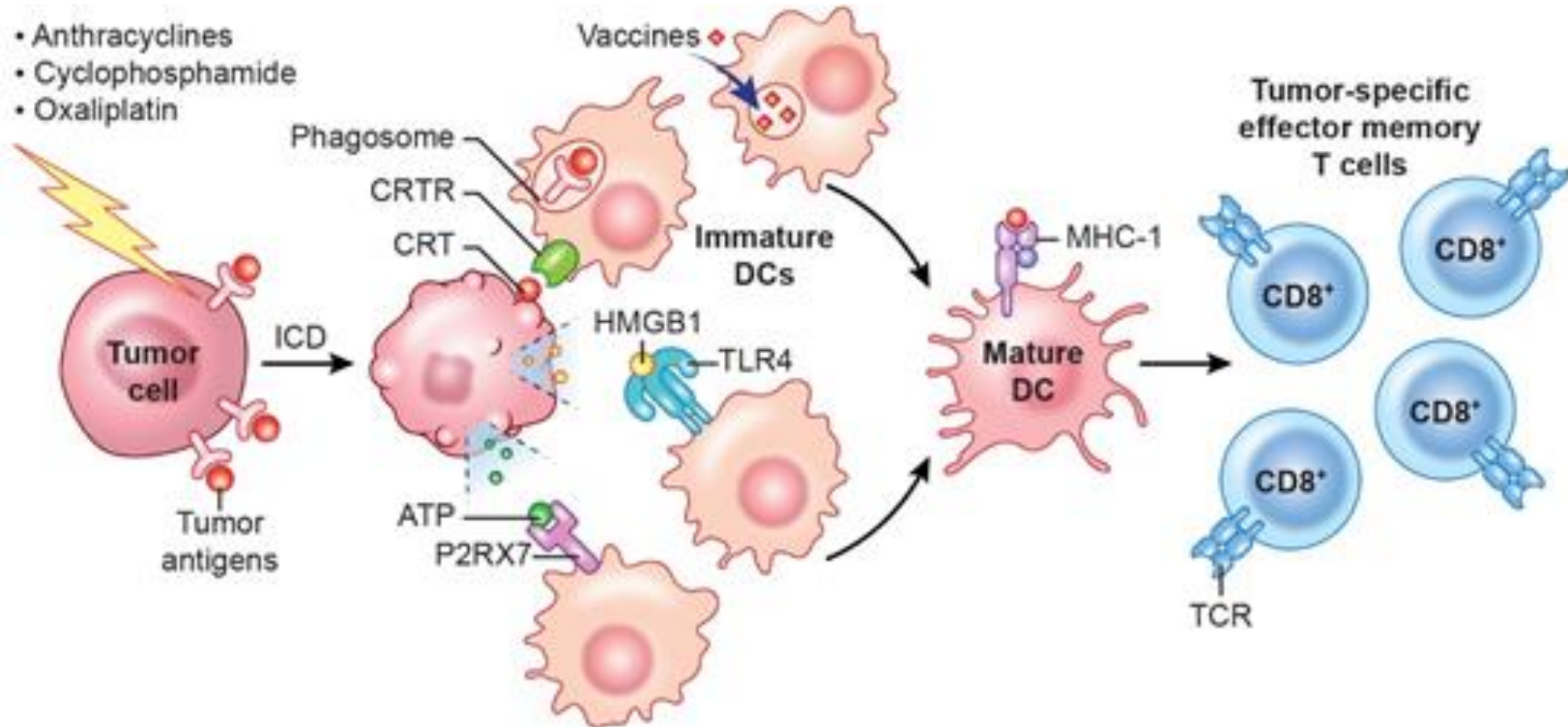
Dual CTLA-4 and PD-1 inhibition



Chae et al. JITC 2018

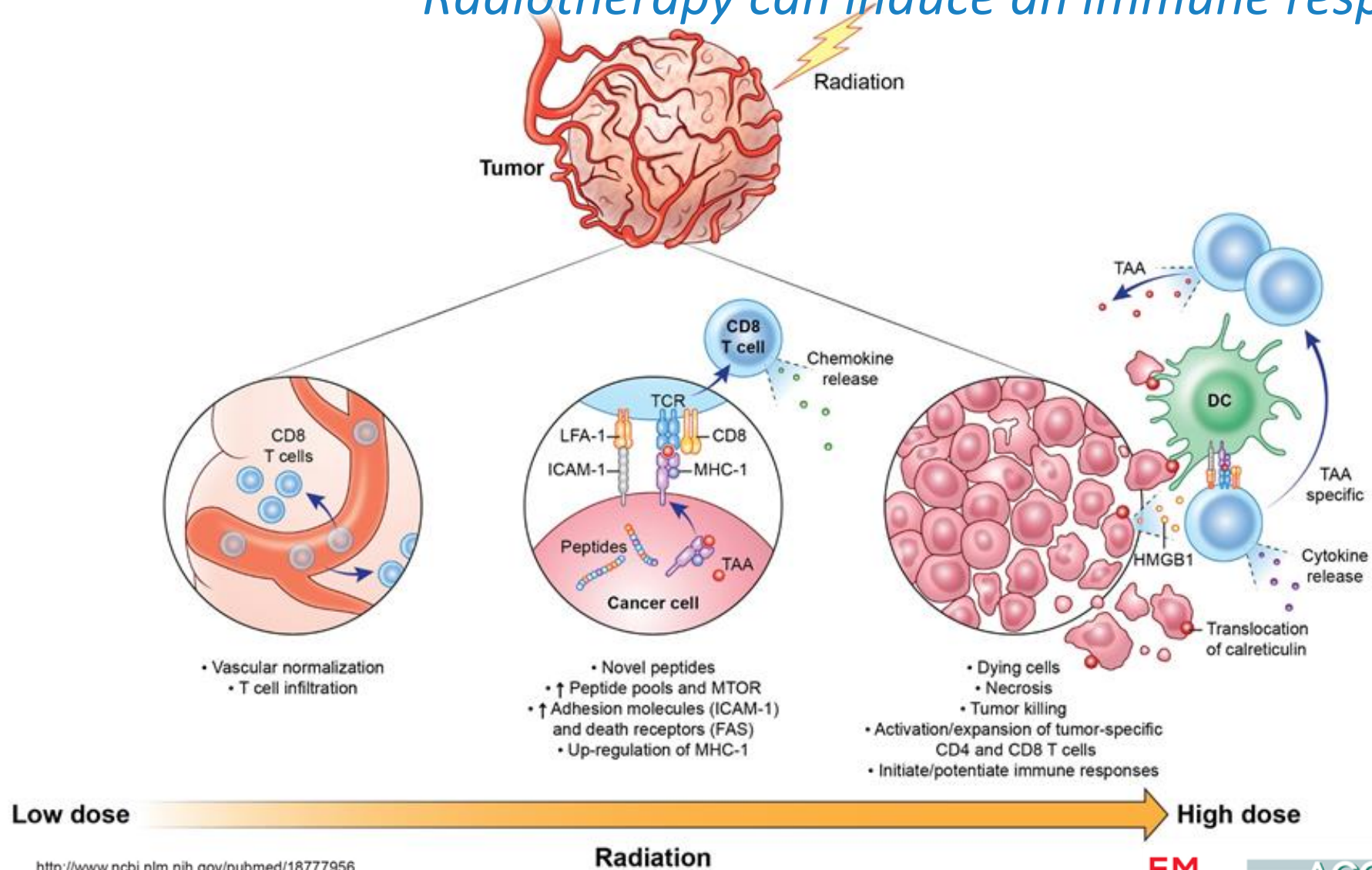
Combination Immunotherapies

Chemotherapy can induce an immune response



Combination Immunotherapies

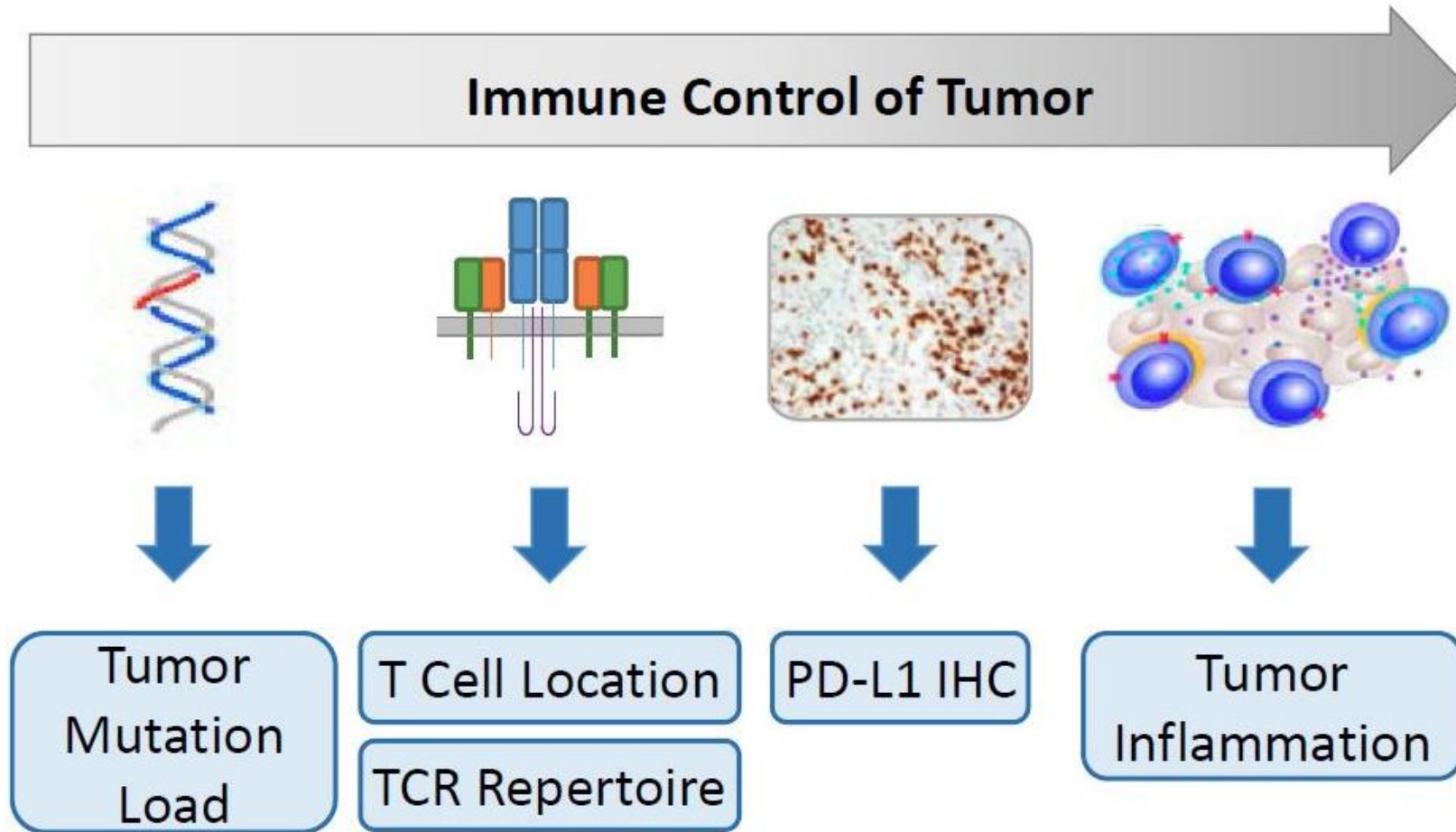
Radiotherapy can induce an immune response



<http://www.ncbi.nlm.nih.gov/pubmed/18777956>

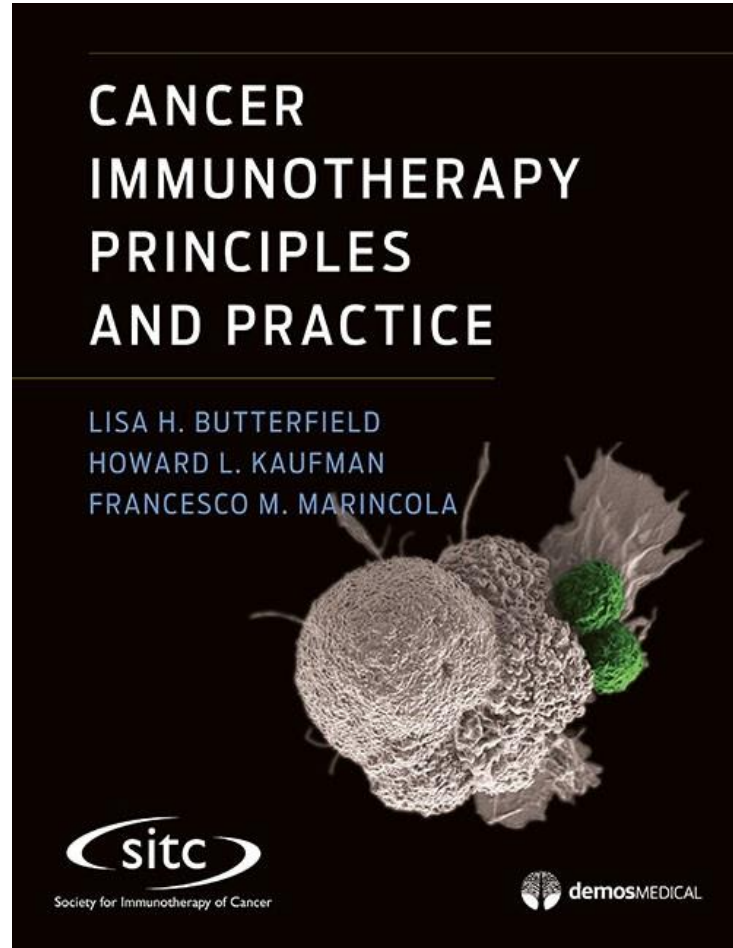
Radiation

Immunotherapy Biomarkers



Cesano et al. Biomedicines 2018

Further Resources



SOCIETY FOR IMMUNOTHERAPY OF CANCER

