



# SITC 2017

November 8-12  
NATIONAL HARBOR  
MARYLAND

Gaylord National Hotel  
& Convention Center



Society for Immunotherapy of Cancer

SITC  
2017

# Identifying and selecting the right grant

**Sandra Demaria, MD**

Weill Cornell Medical College, New York, NY



Society for Immunotherapy of Cancer

#SITC2017

# *Disclosures*

Consulting Fees: Lytix Biopharma, EMD Serono, Nanobiotix, StemImmune, Astra Zeneca

Research grant: Lytix Biopharma

**Opportunities:** What grants are available?

**Eligibility:** For which grants I can apply as PI?

**Suitability:** How much supporting evidence is required?

**Special requirements:** disease-specific, advocates  
involvement, training component

**Other considerations:** overhead and other institutional rules

# Identify opportunities: Sources of information

- Institutional sponsored program office/website/Cancer Center
- Departmental Chair (Nominations)
- Mentor(s)
- Federal agencies (NIH, DOD, NSF, NASA, DOE.....)
- State agencies
- Professional Societies (SITC, AACR, ASCO....)
- Private Foundations (ACS, Damon Runyon, Komen...)
- Industry

# Identify opportunities: Sources of information



A screenshot of the infoEd Global website. The browser address bar shows "infoedglobal.com/solutions/spin-global-suite/". The website has a dark grey header with "CLIENT LOGIN TO: SPIN ICAG ITEMS" and a yellow "X" button. Below the header is the infoEd Global logo and tagline "Research Administration Without Boundaries". A navigation bar includes links for "About Us", "Services", "Education", "News &amp; Events", and "Contact Us". A yellow "Solutions" menu is open, showing options like "SPIN Global Suite", "Grants &amp; Contracts", "Research Compliance", "Clinical Trials", "Animal Facilities", "Research Outputs", and "Technology Transfer". A "Who Benefits from InfoEd" section is also visible. The main content area features a yellow "SPIN" button and a section titled "The Funding Opportunity Database of the Research World". This section describes SPIN as a single solution for researchers and principal investigators, providing a large database of funding opportunities. A "Send to a Colleague" button is present. On the right, a "Related Pages" section lists "Pre-Award", "Grants &amp; Contracts", and "Education" with right-pointing arrows.

Institutional sponsored  
program office

Online Databases

# Identify opportunities: Sources of information

Need directions?



Filtering:

Disease/topic-specific grants

Geographical area

Career stage-specific grants

Career stage-specific grants:  
take advantage of the window (of ~2-5 years) after  
first independent position



**Research Scholar Grants:** Independent investigators **in the first six years** of an independent research career or faculty appointment are eligible to apply.



**Damon Runyon Clinical Investigator Award:** The applicant must apply within the **first four years** of his/her initial full faculty appointment

# Eligibility: about you

- Citizenship/VISA status
- Degree of independence
- Required institutional support (or Nomination)
- Position and experience
- Years from graduation
- Accomplishments: the Super Star awards
- Others (age, ethnicity, sex, family status)



# Eligibility: What are the variables?

- Federal funding:  
NIH usually requires US citizenship or permanent resident status  
DOD (CDMRP) does NOT
- Degree of independence:  
Post-doc (junior, senior)  
Instructor  
Assistant Professor (with own lab space, tenure-track)

# Others (age, ethnicity, sex, family status)

*Example:*

## KELLEN JUNIOR FACULTY FELLOWSHIP PROGRAM

Through a generous gift from the Anna-Maria and Stephen Kellen Foundation, the Dean has established the Kellen Junior Faculty Fellowship Program at Weill Cornell Medicine. This program is designed to provide support to **outstanding newly appointed junior female faculty, especially those who have primary child care responsibilities.**

Kellen Fellowships are intended to provide support to female faculty at the **instructor or assistant professor level**, allowing them to establish a scientific track record leading to success in research and promotion to a higher rank. Awards will be made based on the candidate's past record of achievement, the scientific merit of the submitted proposal, and future promise.

# Suitability: about the project

- Mentored: fellowship, career awards
- Pilot project *versus* larger more established project
- High risk/high reward
- Basic/Translational/Clinical
- Expertise required (co-investigators, collaborators, team)
- Resources required (core facilities, patients, animals..)
- Regulatory documents (IRB, IACUC, Biohazards)

Suitability: about the



- Area of research/topic

Most private foundations grant programs are disease-specific

*Breast Cancer:* Breast Cancer Research Foundation, Breast Cancer Alliance, Susan G. Komen, Mary Kay Foundation, etc...

*Hematologic malignancies:* Leukemia & Lymphoma Society, etc...

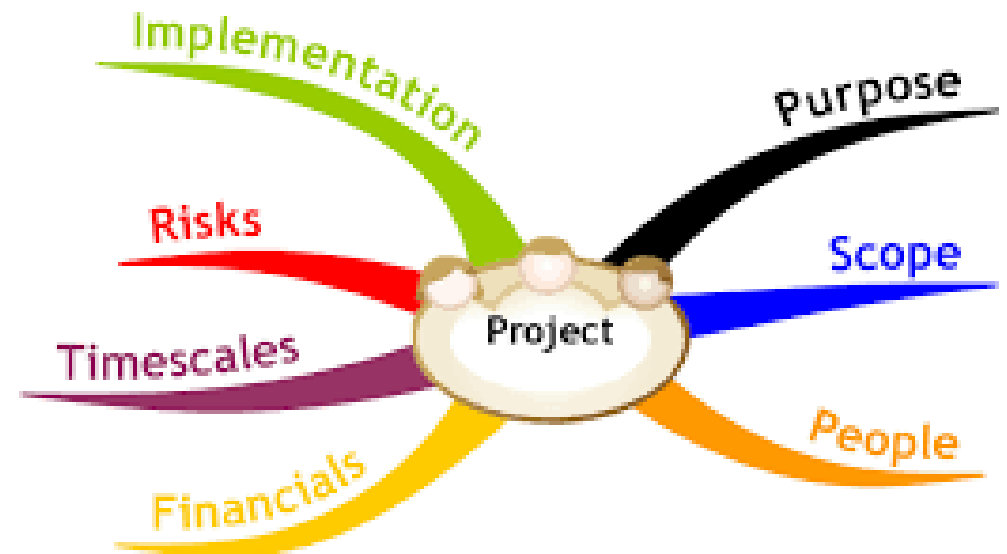
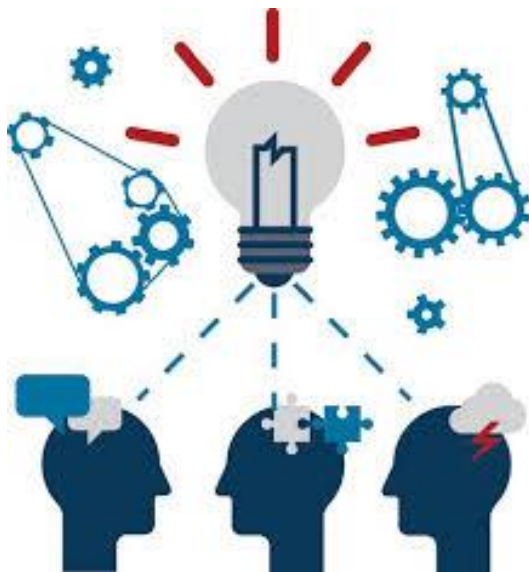
*Skin cancer:* Melanoma Research Foundation, etc...

Suitability: about the



- Supporting data

Big grant = big impact = big burden of evidence **at multiple levels**



Suitability: about the



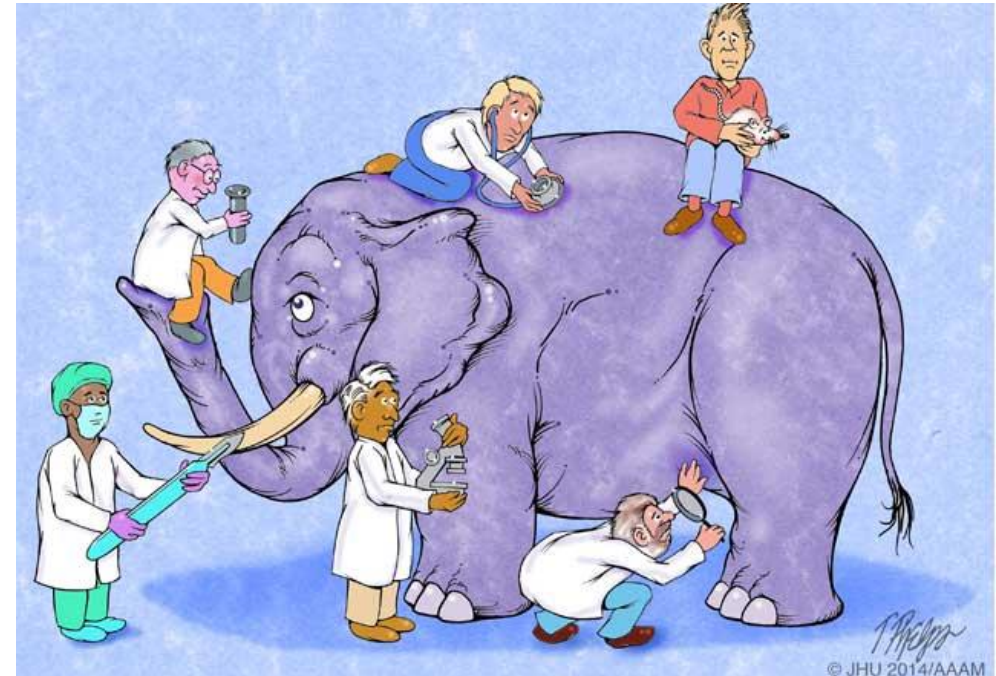
- Supporting data

Big grant = big impact = big burden of evidence about feasibility

Is expertise in all aspects of the project available?



- Co-investigators
- Statisticians
- Patient advocates



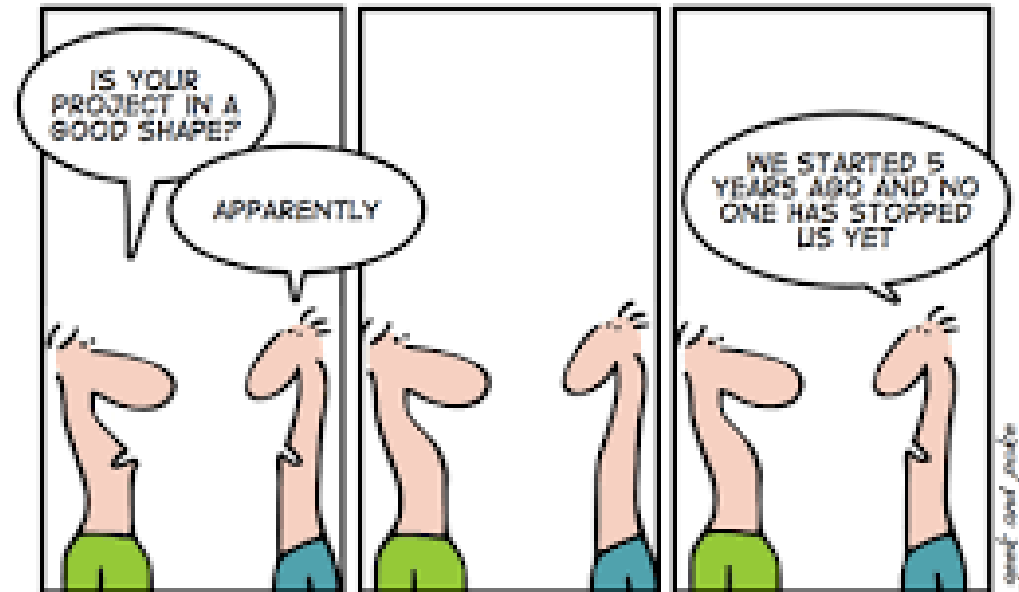
# Other considerations

- First time investigator benefits (NIH): go for R01
- Requirements for promotion
- Overhead required vs allowed (<10-80%)
- Transferability (of mentor, of institution)
- Track record development (topic/disease-specific funding)

# Other considerations: Institutional rules for promotion



R01 or equivalent paying FULL overhead (indirect cost)



ONE YEAR IN A IT PROJECT - DAY 19

Evidence of upward trajectory

# Other considerations: Institutional rules for promotion



R01 or equivalent paying FULL overhead (indirect cost)



Team science: MPI grants



## Transitional grants

Great stepping stone

Remember: you cannot have other serious funding before you apply for a K award or equivalent, but once you have been awarded one it is usually possible to apply for other independent funding

2001-2006: K08 **Transitional**

2002-2005: New York City Council Speaker's Fund for Biomedical Research: Toward the Science of Patient Care Award **Career-stage specific (Institutional nomination to apply)**

2003-2005: Breast Cancer Research Award from The Chemotherapy Foundation **Small/geographically-restricted**

2004-2005: NYU Cancer Institute Translational Research Task Force Award. **Pilot (institutional)**

2005-2006: DOD- Breast Cancer Research Program (BCRP) Concept award **Pilot Federal**

2005-2006: Elsa U. Pardee Foundation **Small/NON-geographically-restricted**

2005-2009: American Cancer Society Research Scholar Award **Career-stage specific**

2007: **R01 !!!**



# Questions?

