

Basic Principles of Cancer Immunotherapy

Gregory B. Lesinski, PhD, MPH

Winship Cancer Institute of Emory University



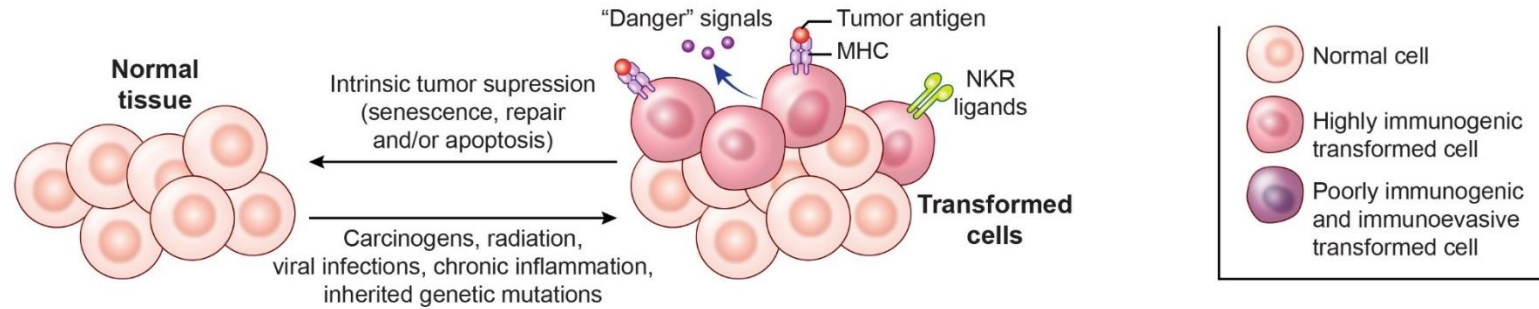
Disclosures

- ProDa Biotech, LLC - Consultant
- Vaccinex, Inc.; Merck, Inc. – Research Funding via Emory University for Clinical Trial Correlative Studies.
- I will be discussing non-FDA approved indications during my presentation.

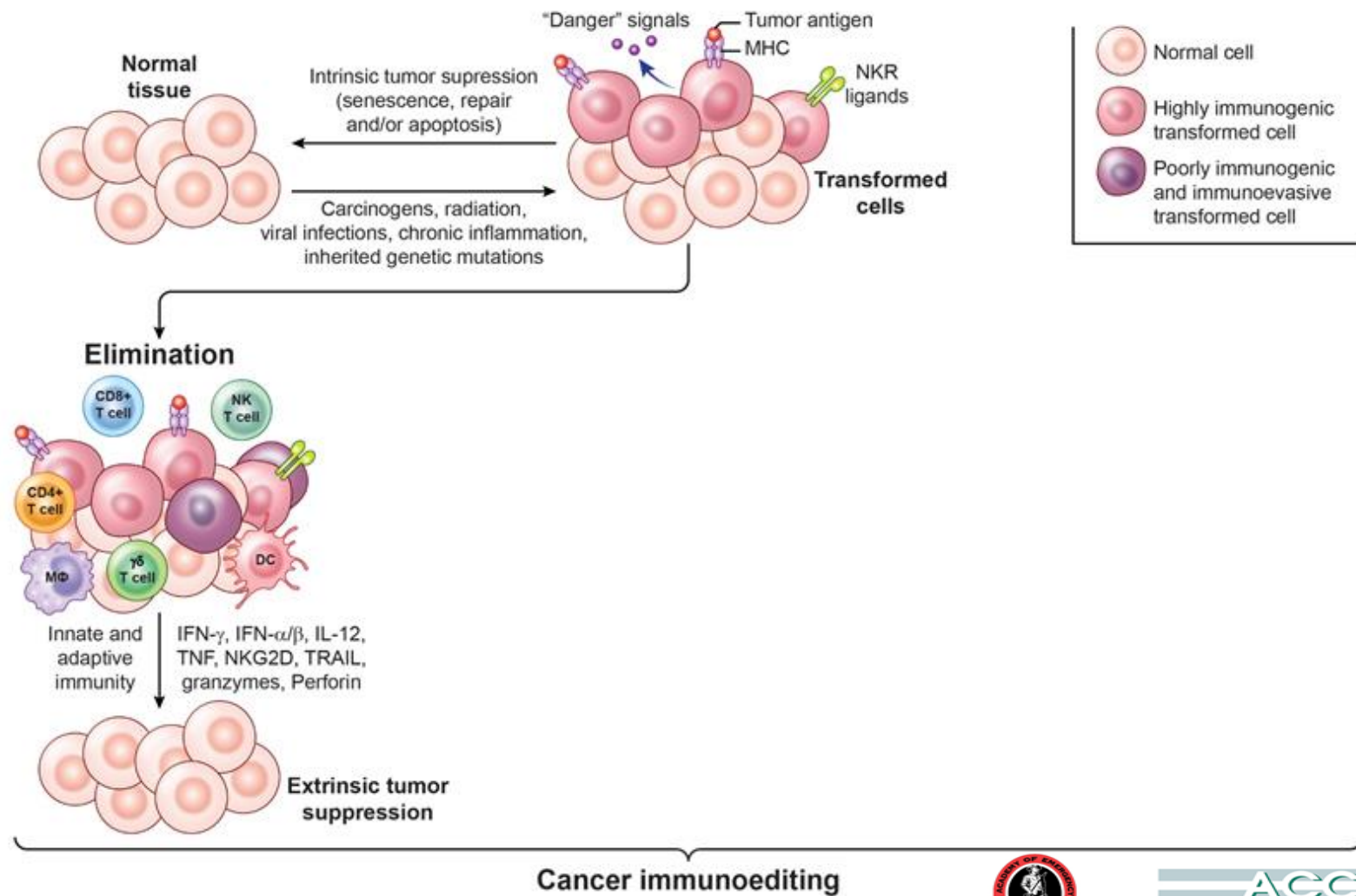
Why does the immune system fail to
eliminate cancer?

Cancer cells grow progressively
in immunocompetent hosts without evidence of
T cell exhaustion or systemic anergy.

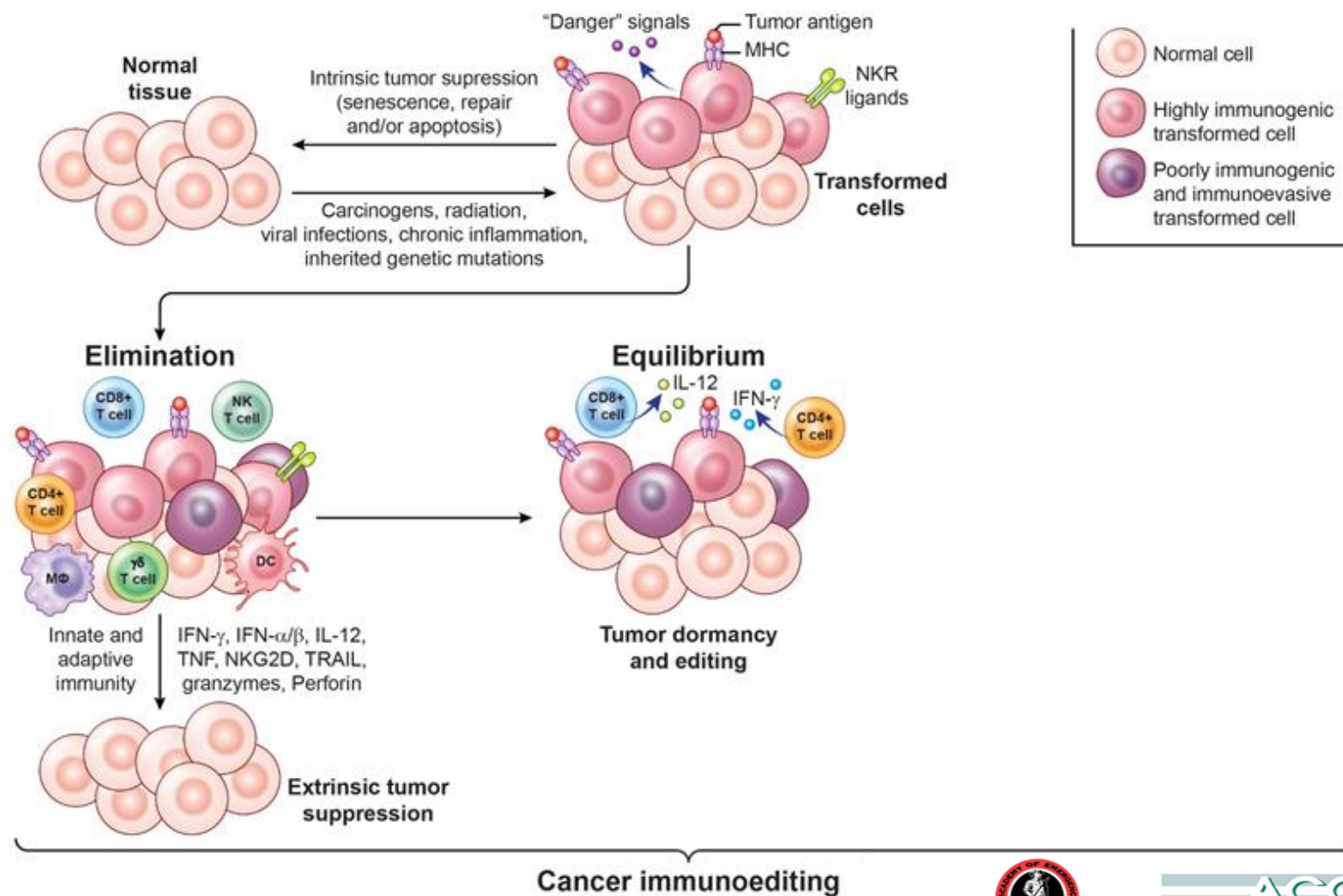
The 3 Es of cancer immunoediting



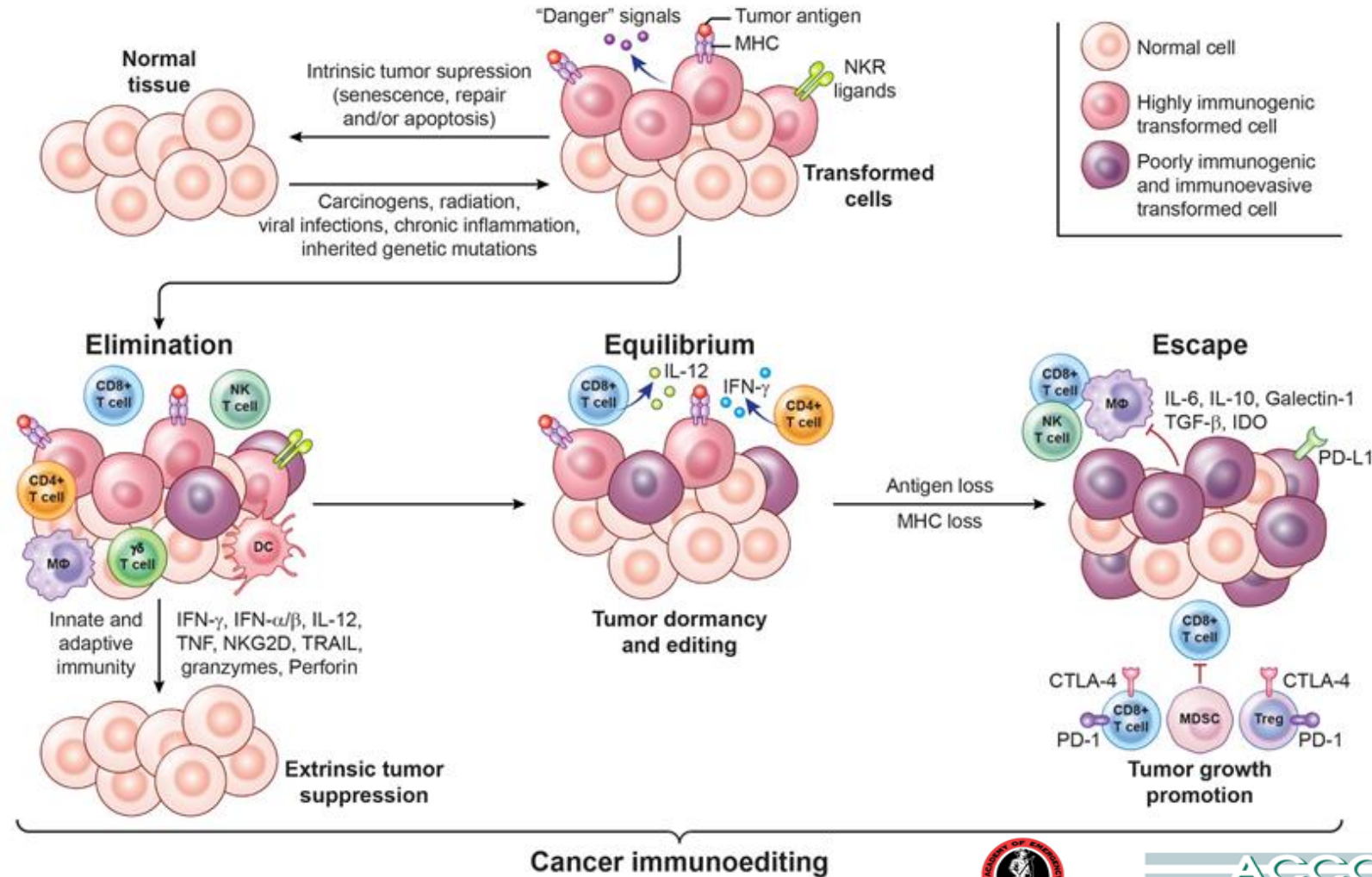
The 3 Es of cancer immunoediting



The 3 Es of cancer immunoediting



The 3 Es of cancer immunoediting

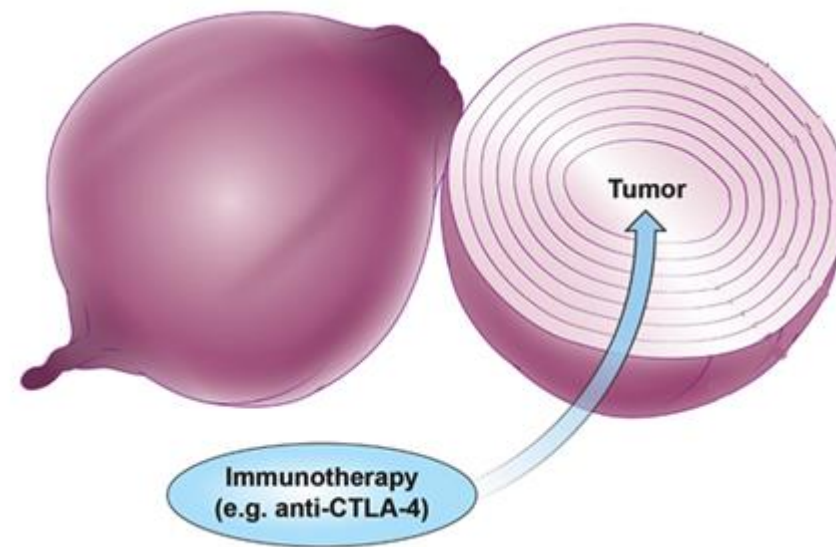


To exist, tumors must evolve mechanisms to locally disable and/or evade the immune system.

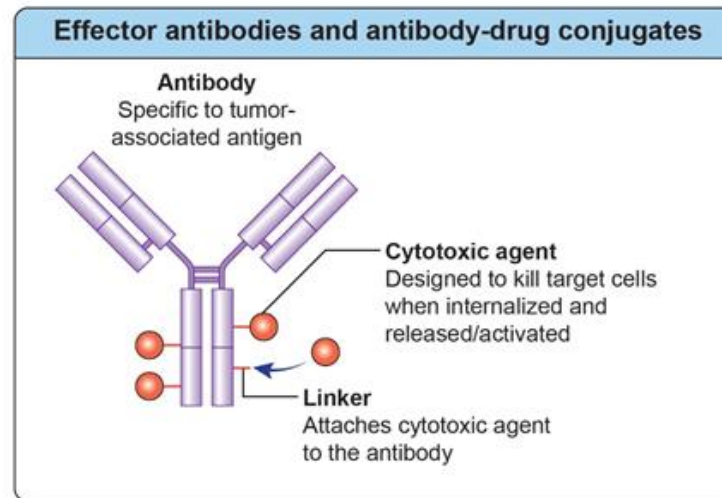
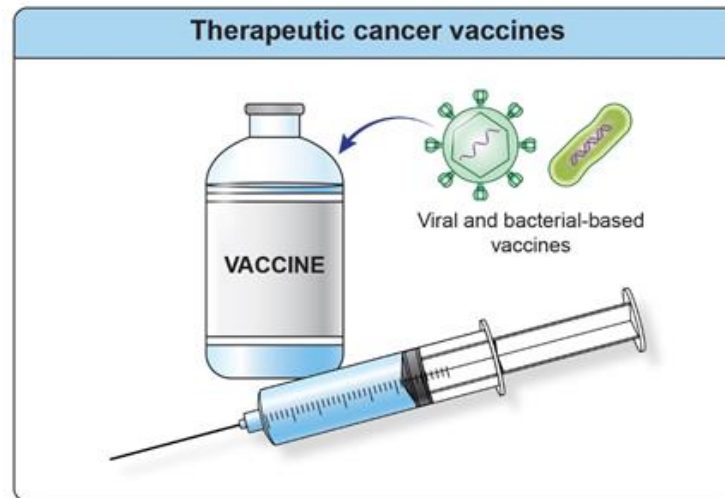
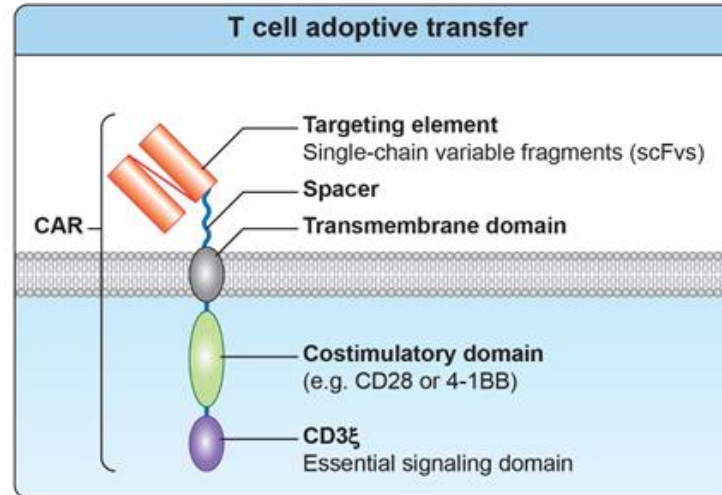
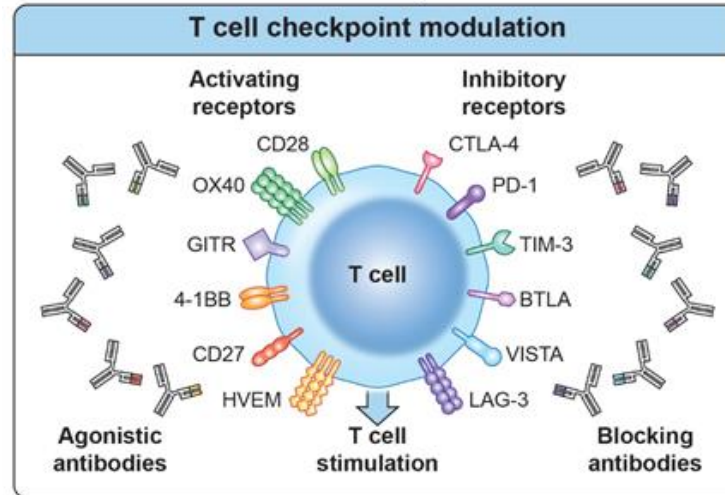
The goal of immunotherapy, then, is to restore the capacity of the immune system to recognize and reject cancer.

Multi-layered immunosuppression

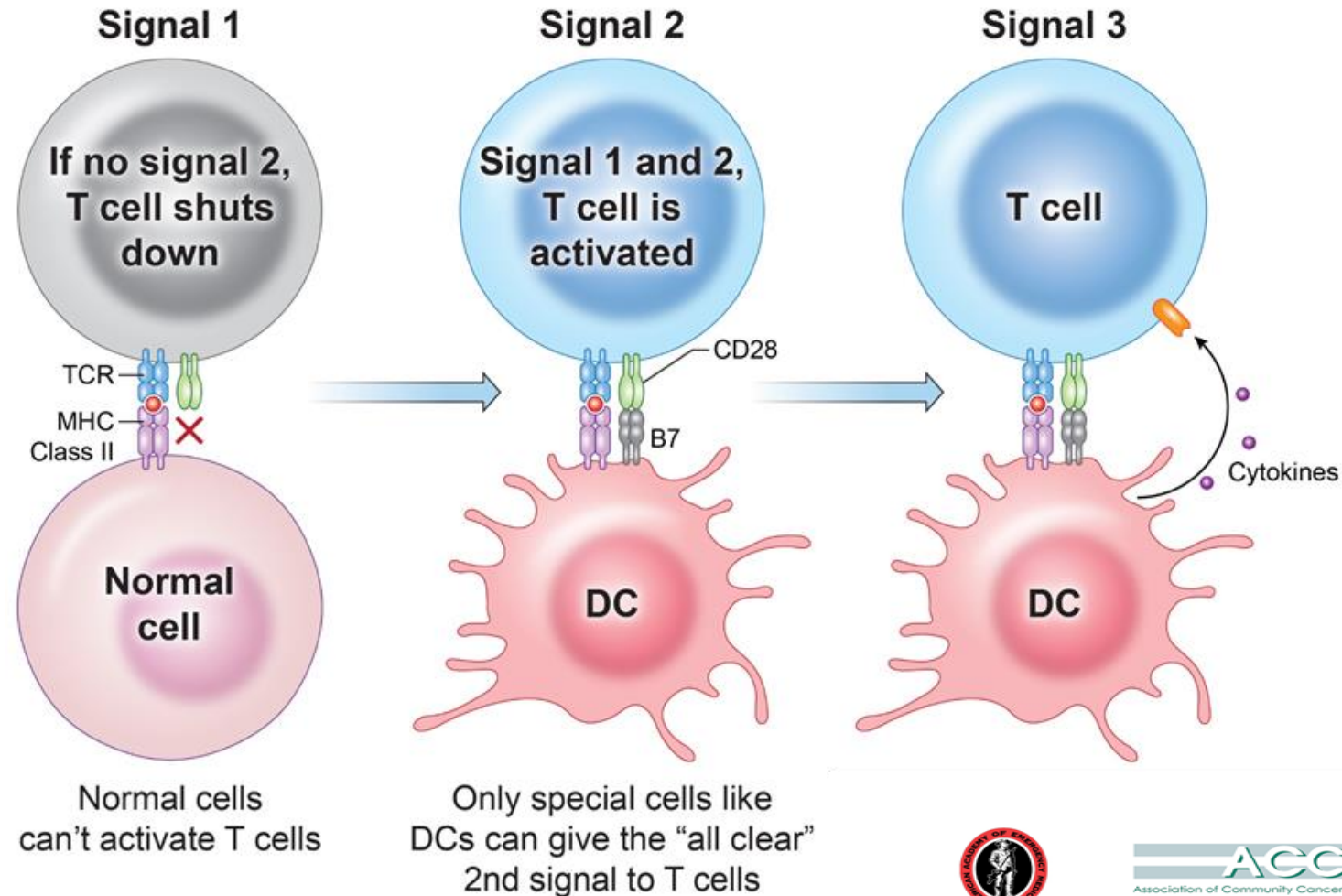
- Tumors insulate themselves with dense layers of immunosuppressive stroma
- Overcoming the many layers of interconnected and often functionally redundant immune suppressive mechanisms represents a daunting challenge for tumor-specific T cells
- Immunotherapy can “peel back” the layers of local immune suppression, thereby restoring the capacity of T cells to eradicate the tumor



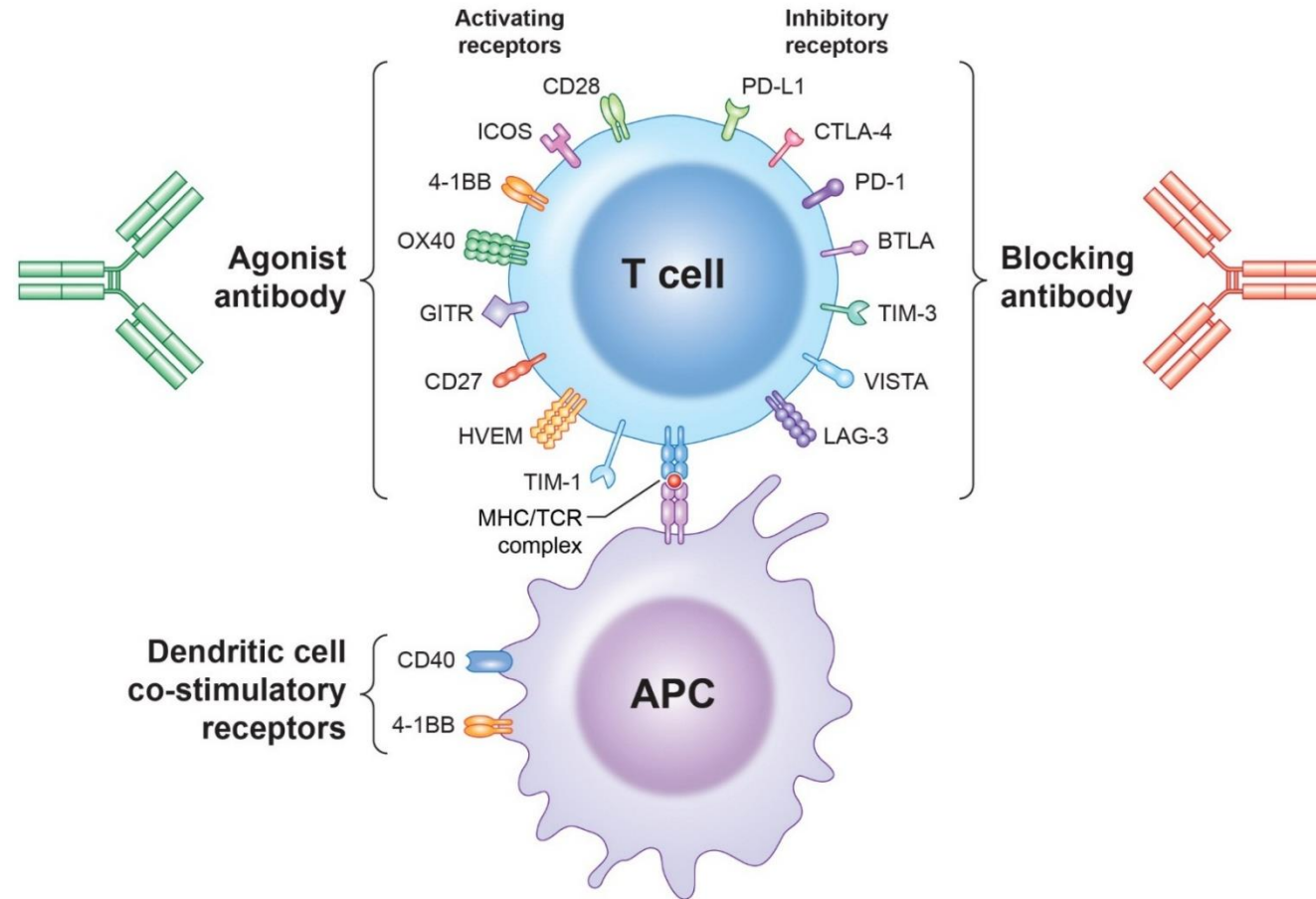
Types of immunotherapy



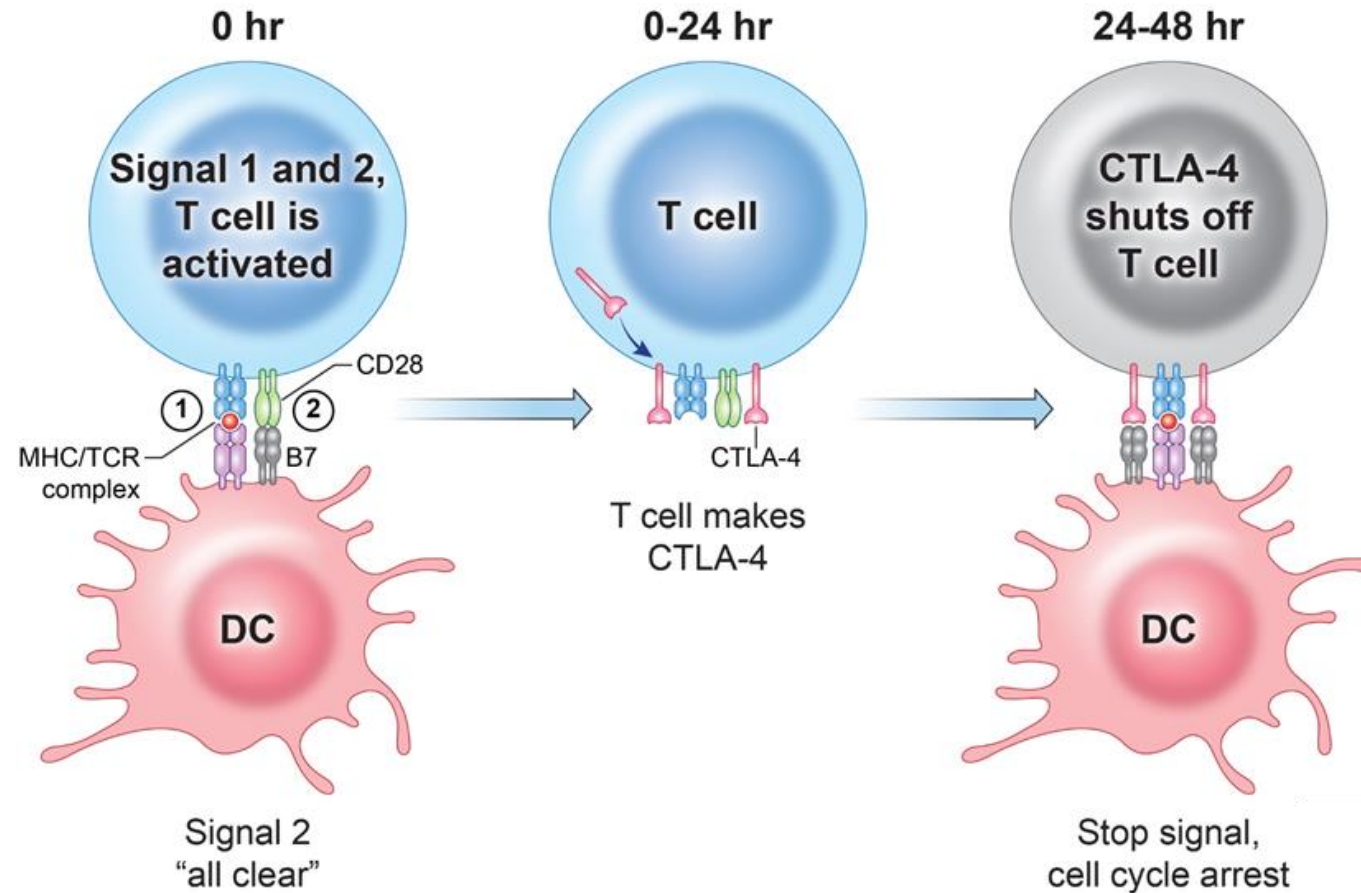
Three signals for antigen-specific T cell activation



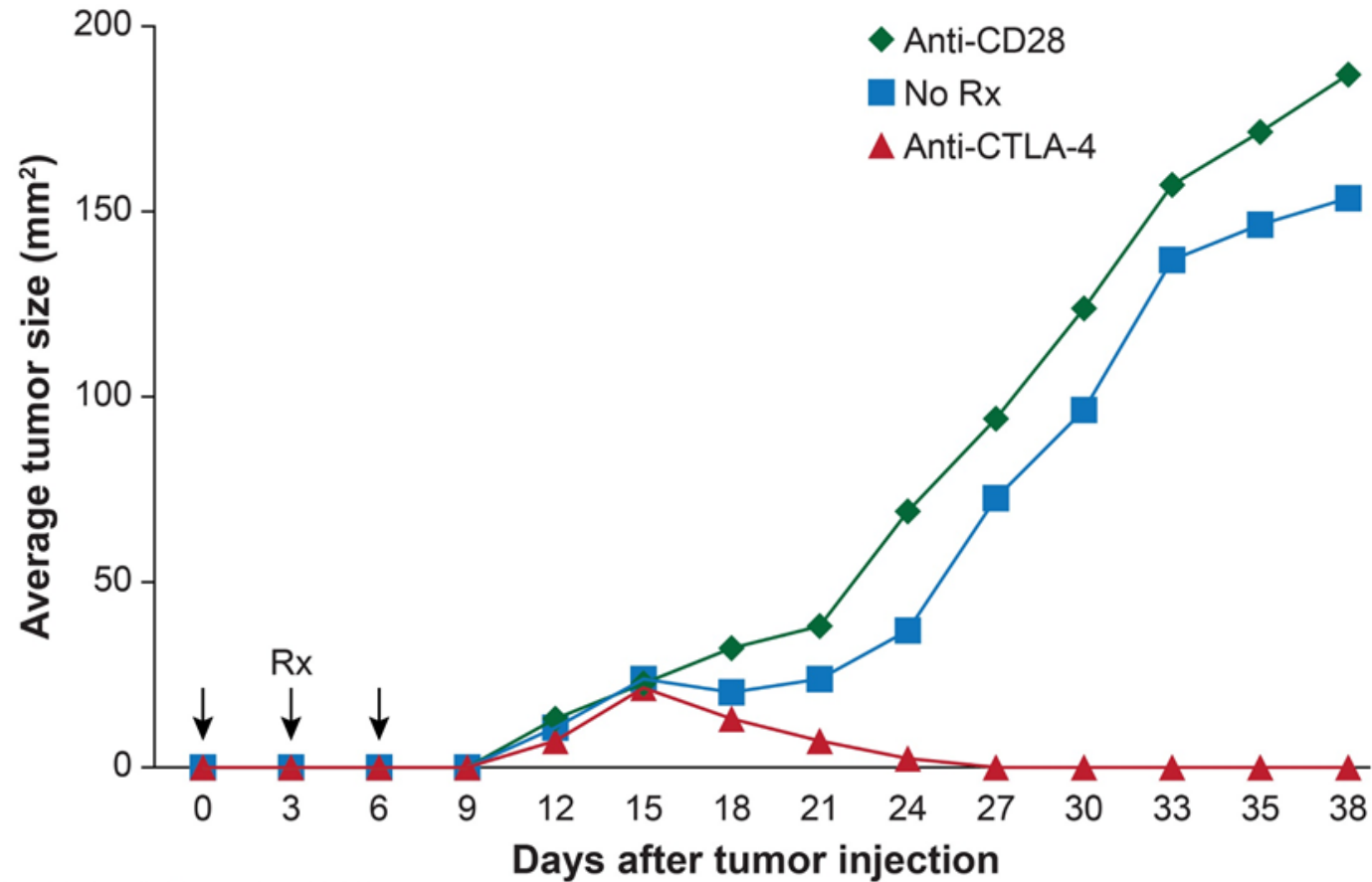
T cell checkpoint modulation



CTLA-4, a negative regulator of T cell activity limits the responsiveness of activated T cells



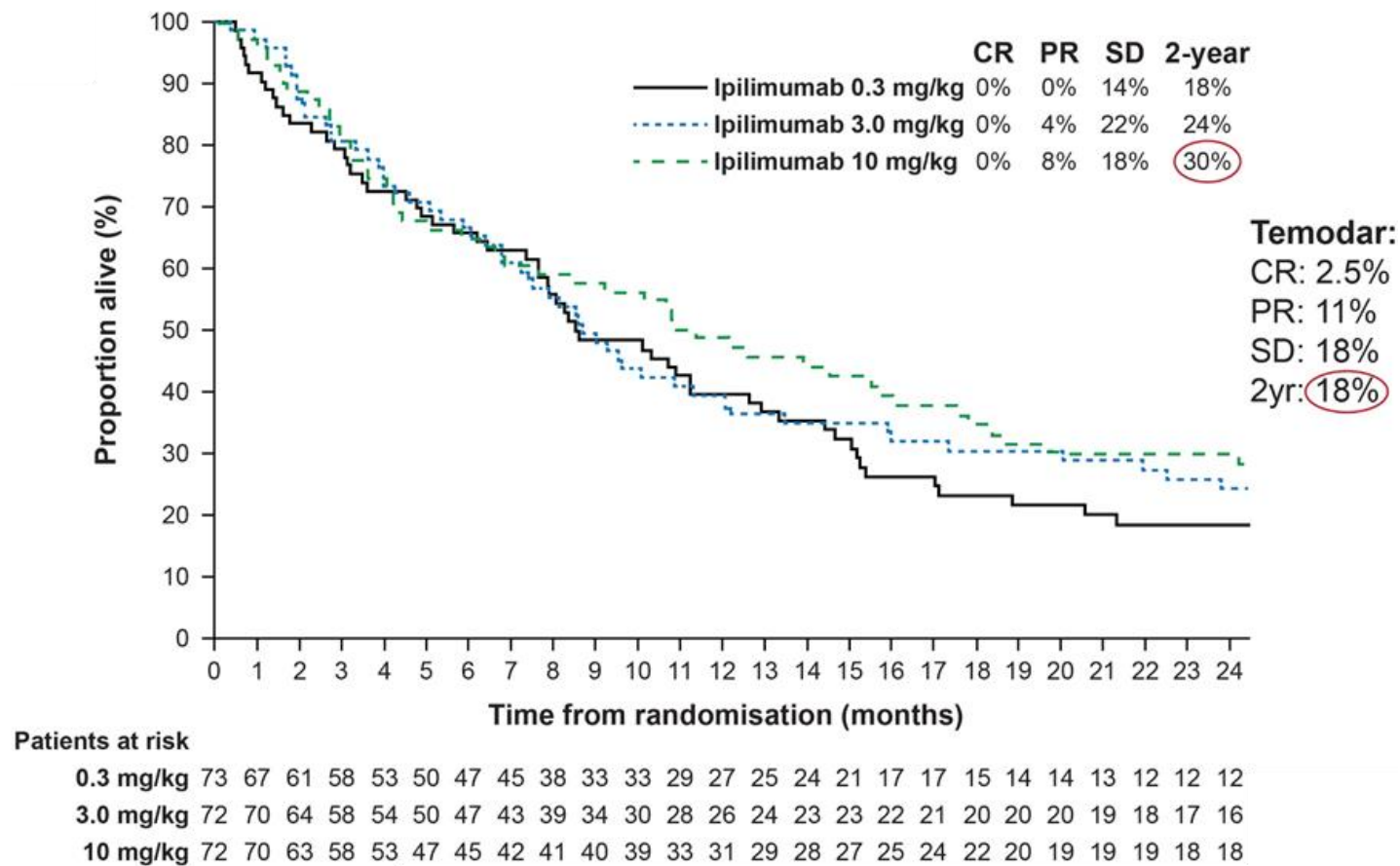
Anti-CTLA-4 induces regression of transplanted colon carcinoma



Leach DR, Krummel MF, Allison JP. 1996.
Enhancement of antitumor immunity by CTLA-4 blockade.
Science. 217(5256): 1734-6.



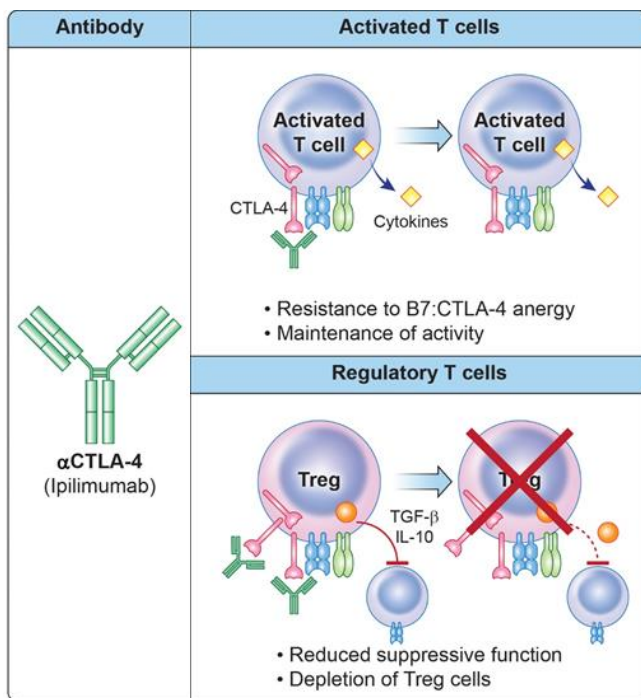
Ipilimumab (human anti-CTLA-4) was approved for the treatment of metastatic melanoma by FDA in 2010



Wolchok et al. 2010. Lancet Oncol.



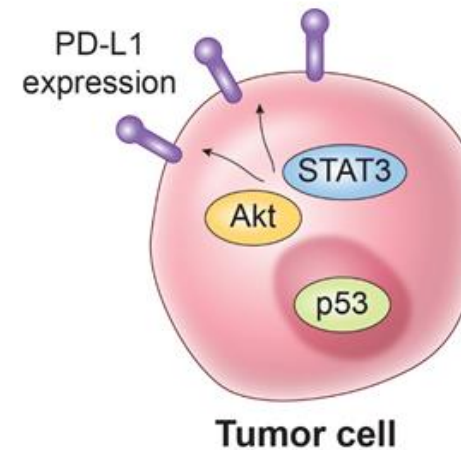
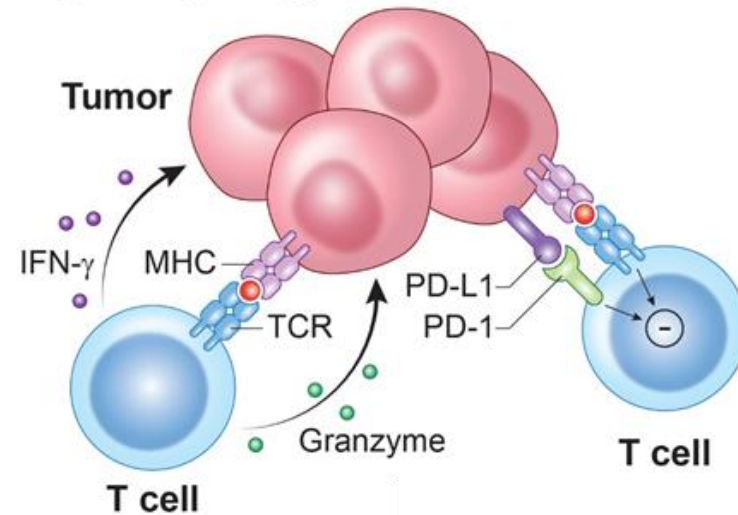
Which T cells are affected by ipilimumab (α CTLA-4)?



The efficacy and selectivity of anti-CTLA-4 therapy increase in patients who have higher percentages of activated tumor-specific T cells at the time of treatment

PD-1: PD-L1 inhibitory pathway

- PD-1 signaling promotes T cell tolerization by inhibiting downstream activation signals
- PD-1 expression is upregulated by activated and exhausted T cell populations
- T cell surface PD-1 receptor binds to and is activated by PD-L1 and PD-L2
- Many cells within the tumor microenvironment express PD-L1/PD-L2 allowing for the suppression of T cell activation
- Tumor PD-L1 expression is regulated via two general mechanisms:
 1. TIL production of IFN- γ
 2. Oncogenic signaling pathways

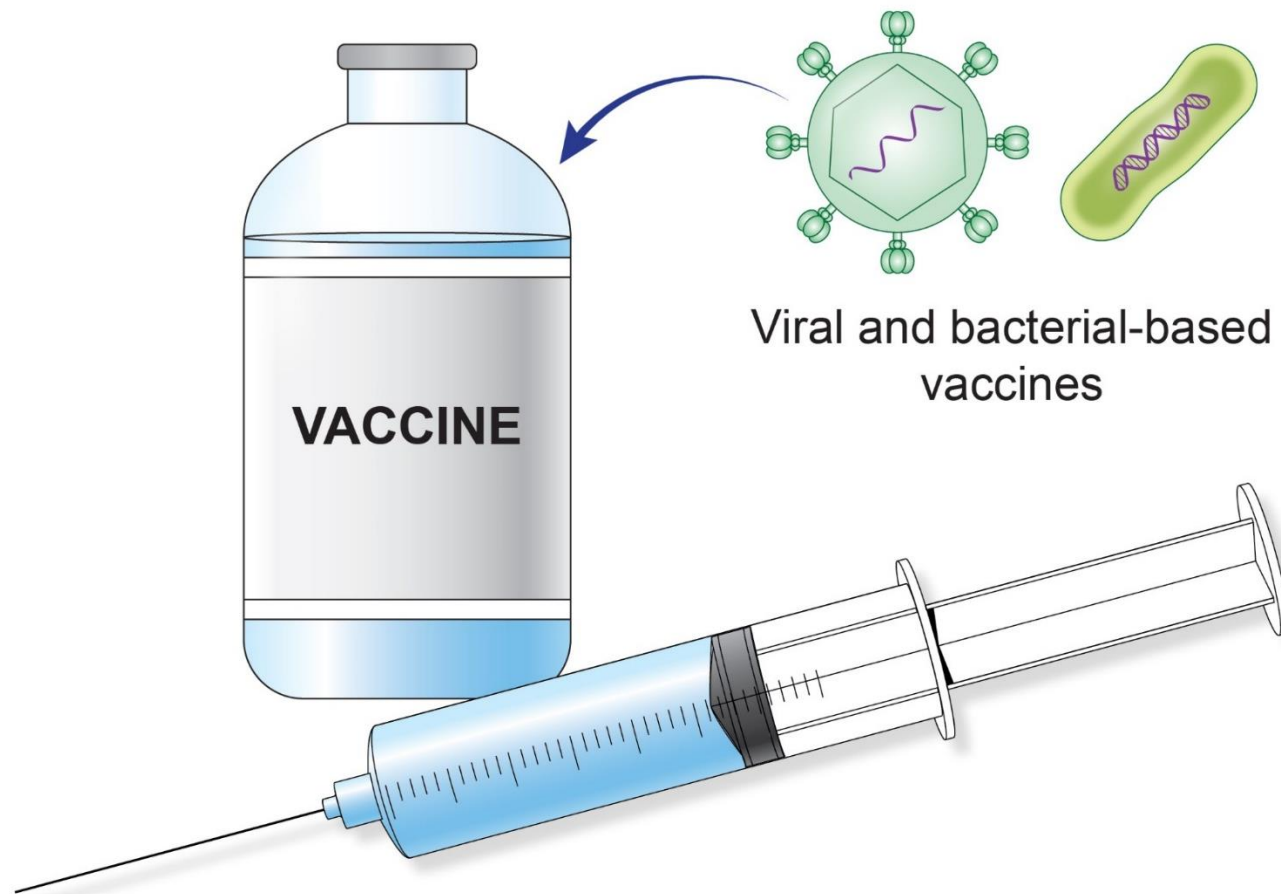


Francisco, L. et al. *Immunol Rev.* 2010. 236: 219.
Pardoll, D.M. *Nat Rev Cancer.* 2012. 12: 252.






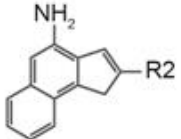
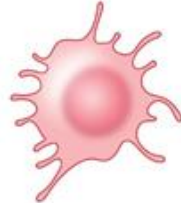
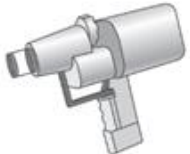
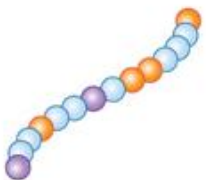
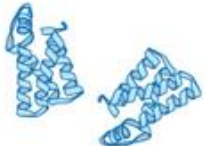




To exist, tumors must evolve mechanisms to locally disable and/or evade the immune system.

The goal of T cell checkpoint blockade is to make T cell “off-switches” inaccessible to tumor cells, thus restoring tumor-specific immunity.

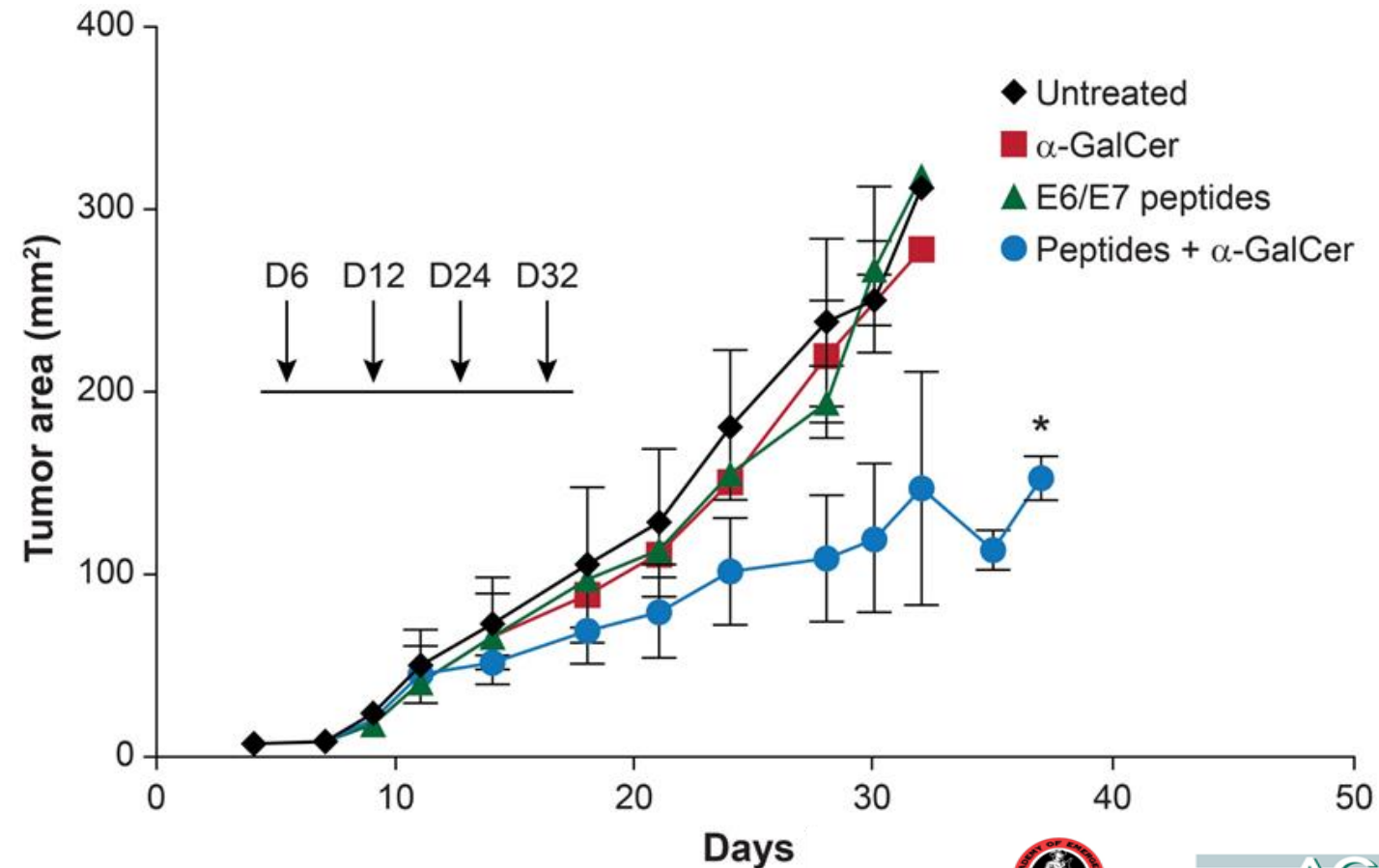
Therapeutic cancer vaccines



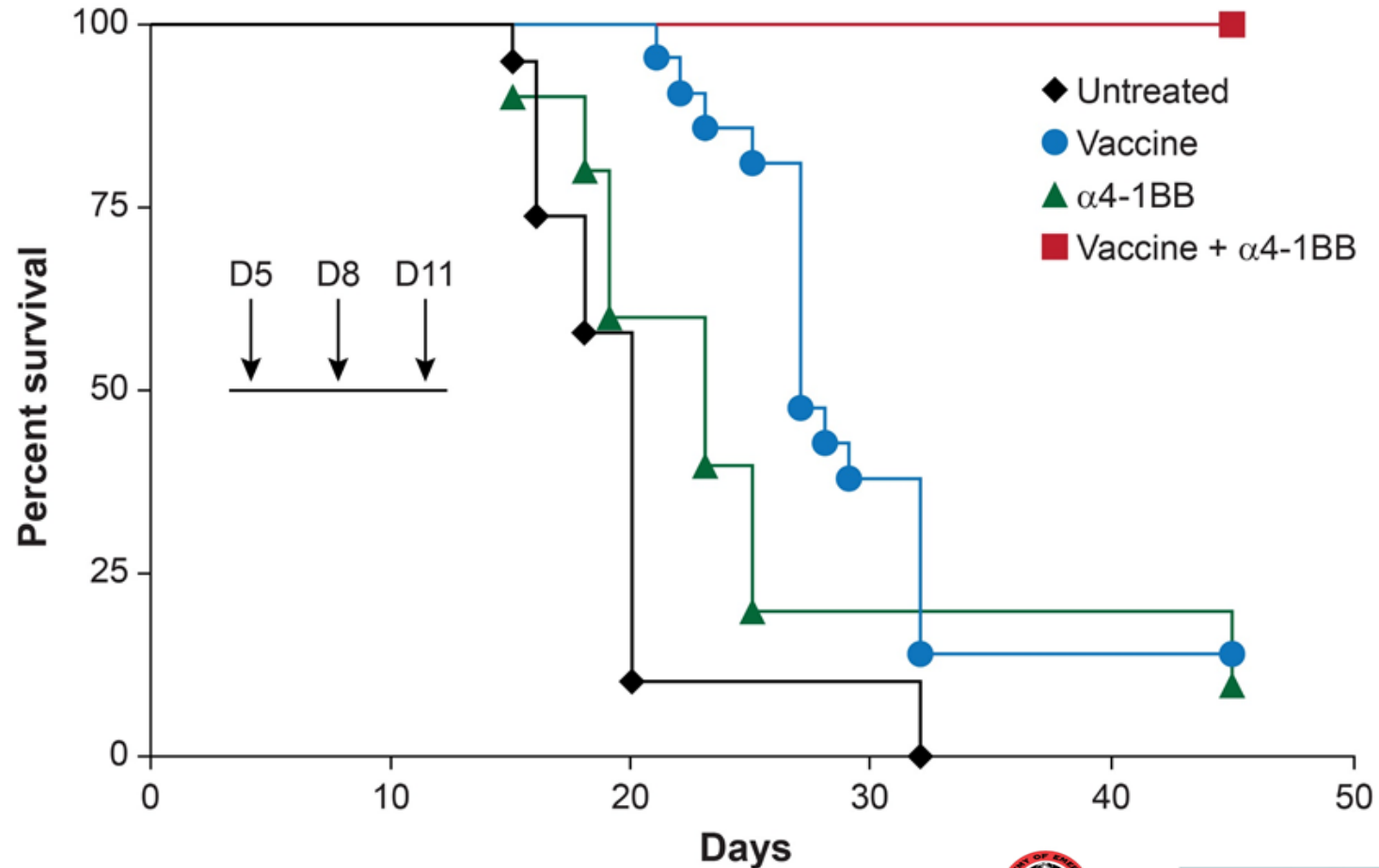
Components of a cancer vaccine

Antigen	Adjuvant	Vector	Mode of Administration
	 Emulsifiers		 Injection
	 Innate agonists		 Gene gun
	 Cytokines		 Systemic infusion
	 Antibodies		 Nasal spray

An intra-nasal HPV E6/E7: α -GalCer vaccine slows growth of TC-1 tumors



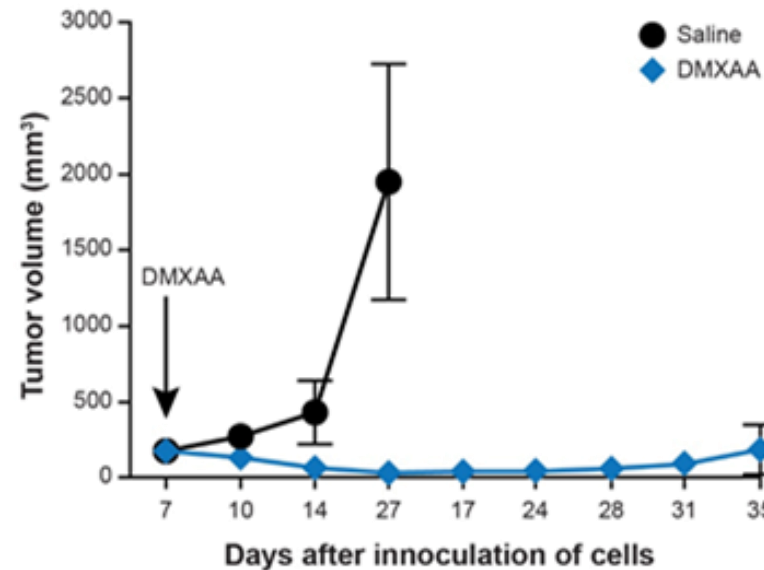
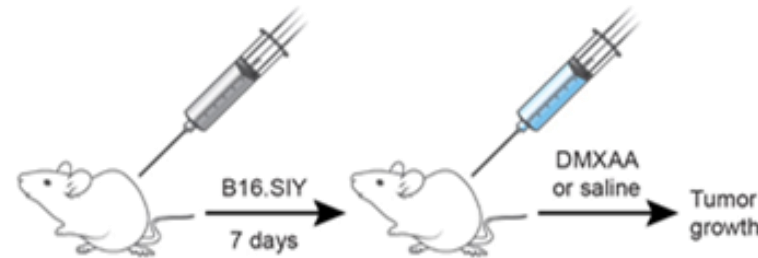
4-1BB agonist antibody and HPV E6/E7 vaccine synergize in curing TC-1 tumors



Todd Bartkowiak, M.S.

Intratumoral injection of innate immune agonists: The direct vaccination approach

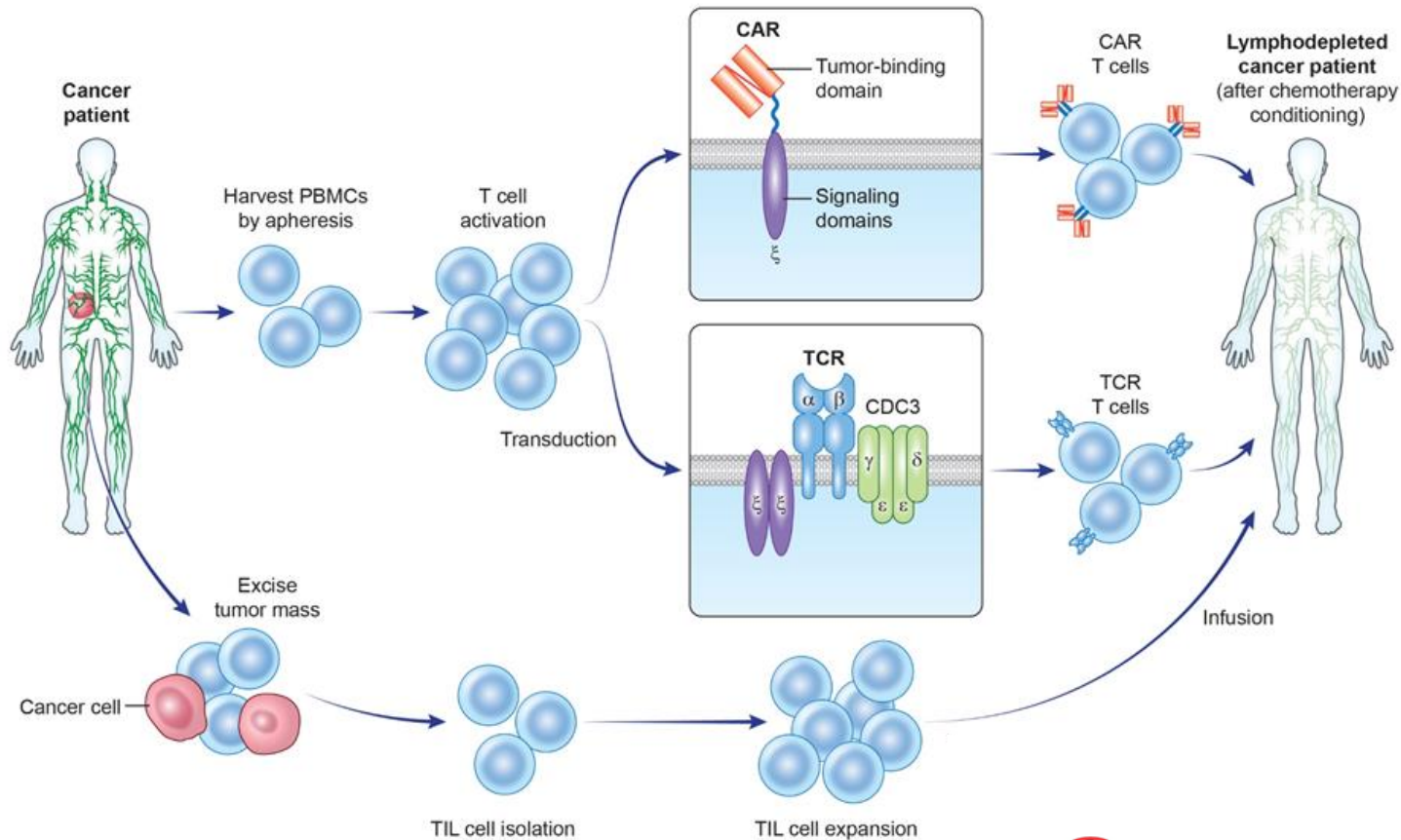
Intratumoral DMXAA (mouse STING agonist) triggers rejection of B16 melanoma



To exist, tumors must evolve mechanisms to locally disable and/or evade the immune system.

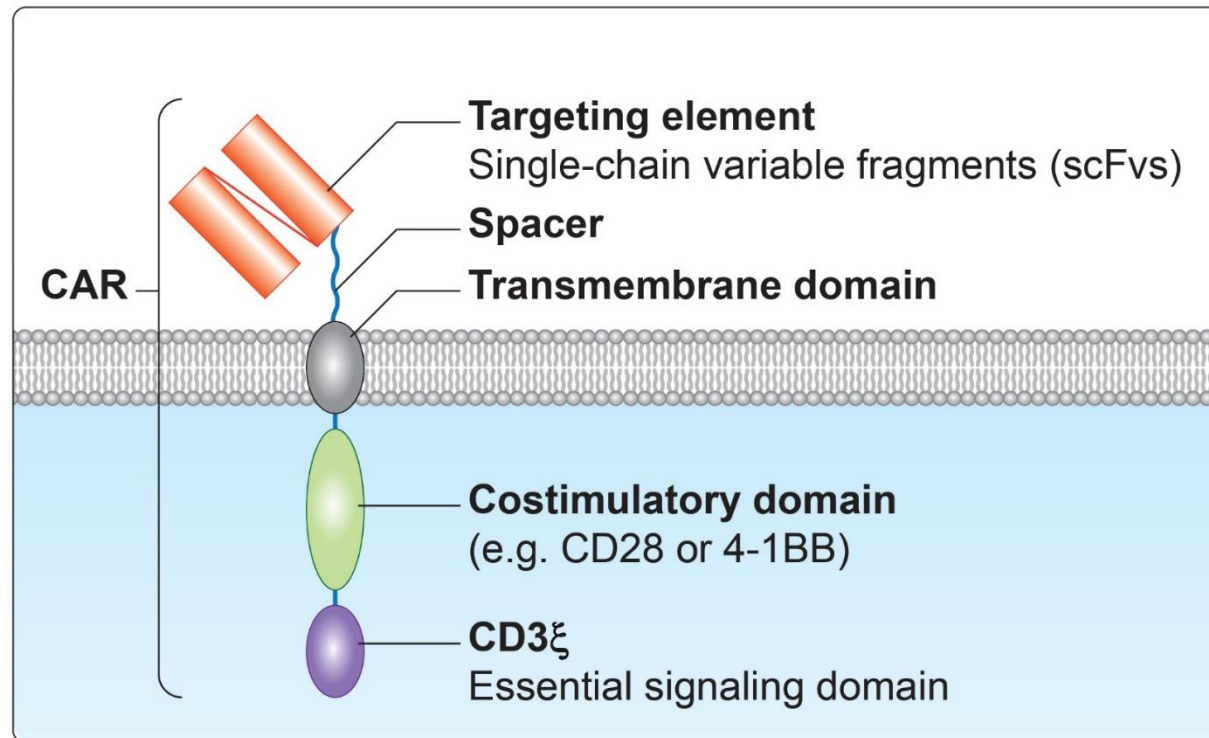
The goal of therapeutic cancer vaccination is to increase the immunogenicity of tumor antigens which are poorly presented by the tumor in order to generate a high frequency of tumor-specific T cells.

Adoptive T cell therapy can involve engineered (CAR, TCR) or patient-derived (TIL, PBMC) T cells





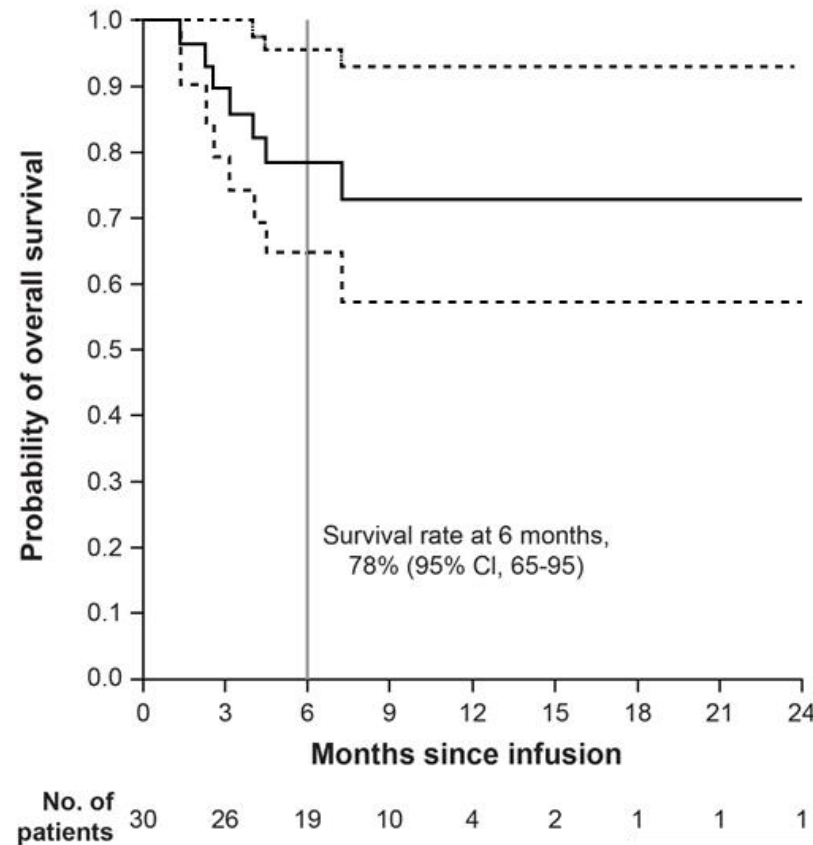
T cell adoptive transfer



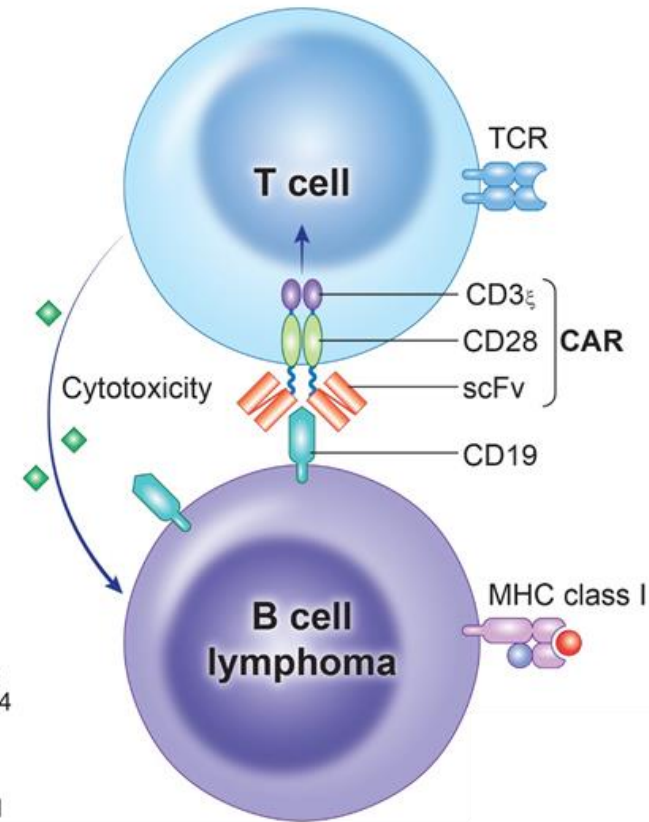
CARs, TIL, TCR, PBMCS



Effective treatment of relapsed B cell ALL with CD19 CAR T cell therapy



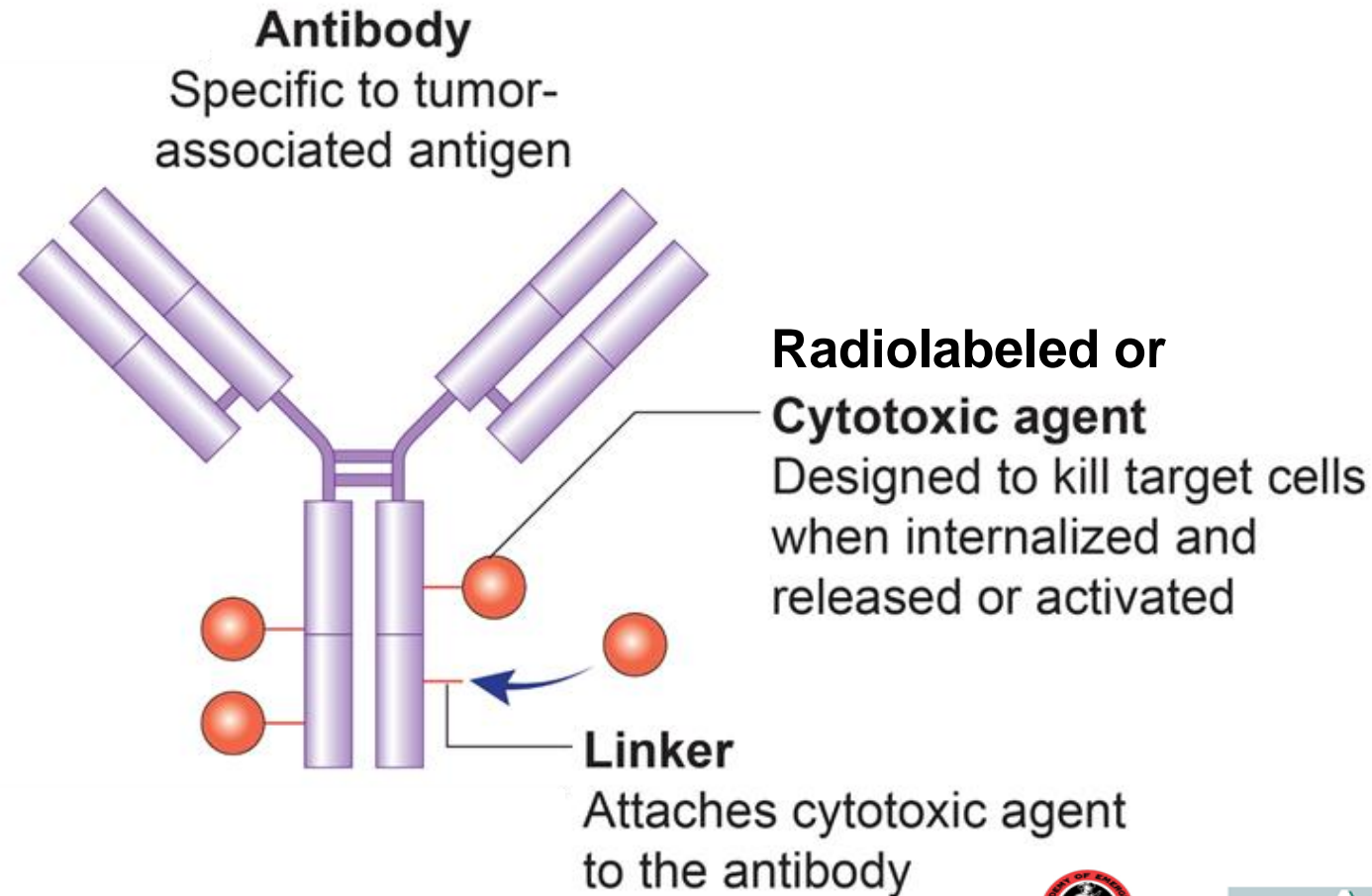
Maude S, Frey N, Shaw P, Aplenc R, Barrett D, Bunin N, Chew A, Gonzalez V, Zheng Z, Lacey S, et al. 2014. Chimeric antigen receptor T cells for sustained remissions in leukemia. The New England Journal of Medicine. 374(10): 998.



To exist, tumors must evolve mechanisms to locally disable and/or evade the immune system.

The goal of T cell adoptive transfer is to win the numbers game and overwhelm the tumor with a higher frequency of tumor-specific T cells than it is capable of suppressing.

Effector antibodies and antibody-drug conjugates (ADCs)

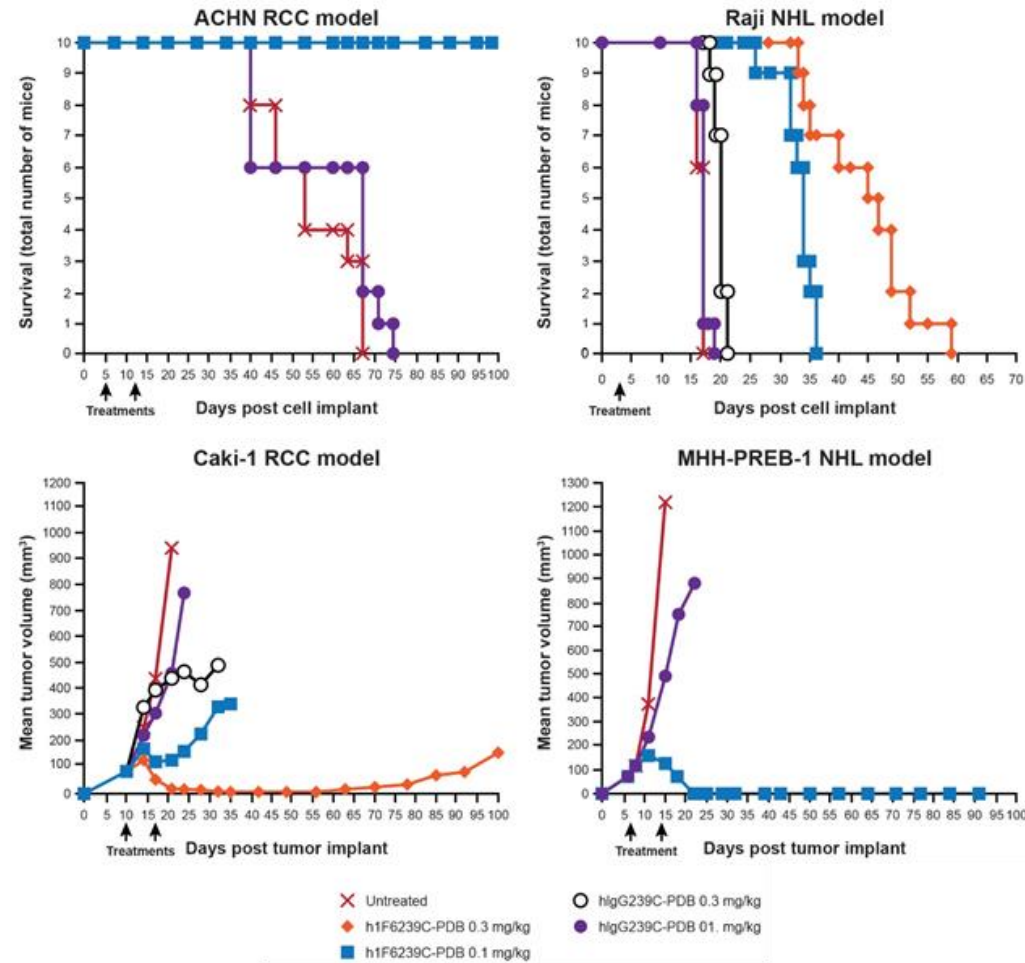


Key ADC / antibody principles

- **Specificity:** The more tumor specific the target antigen is, the higher the agent can be dosed without limiting toxicity
- **Internalization:** The target tumor surface protein must internalize to deliver the toxin - it should do so frequently and to a suitable endosomal compartment.
- **Stability:** The toxin must remain inert and tethered to the antibody until it is delivered to its target cell.



SGN-70A in the clinic for NHL and RCC

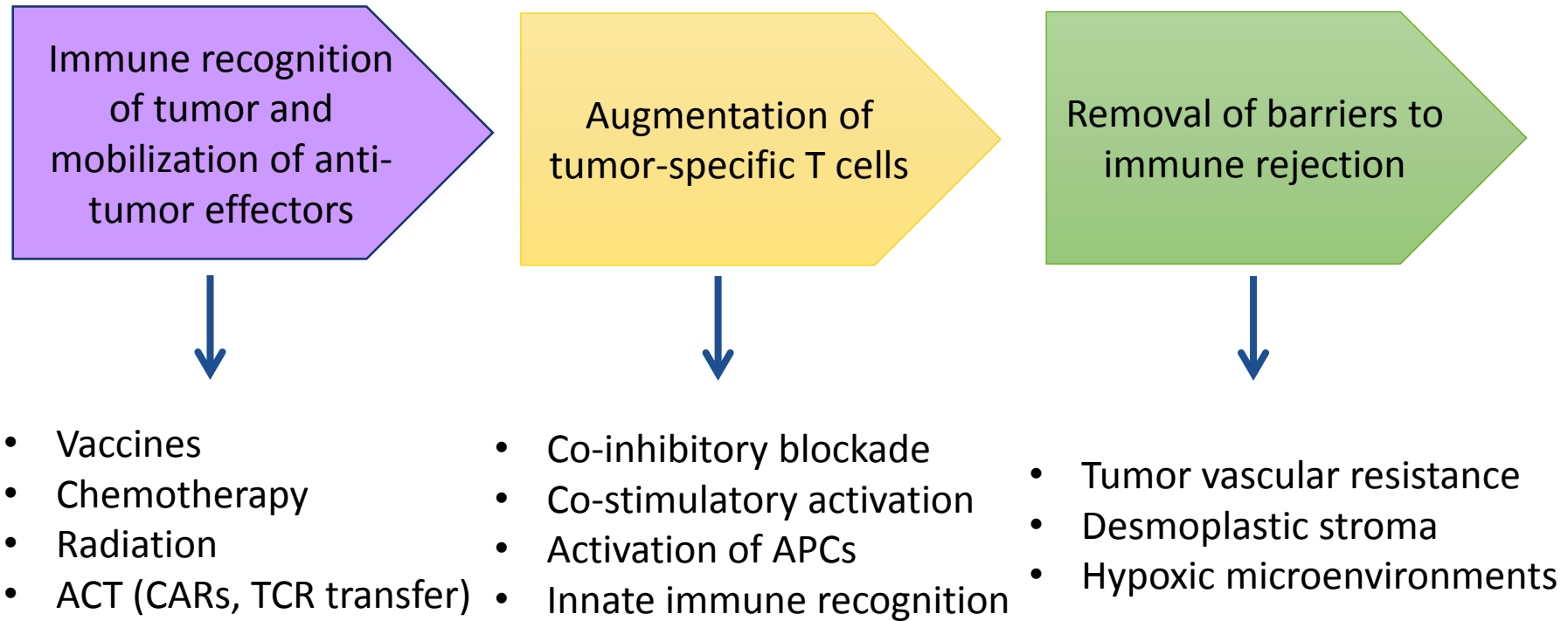


Jeffrey SC et al. 2013. Bioconjug Chem. 24(7): 1256-63



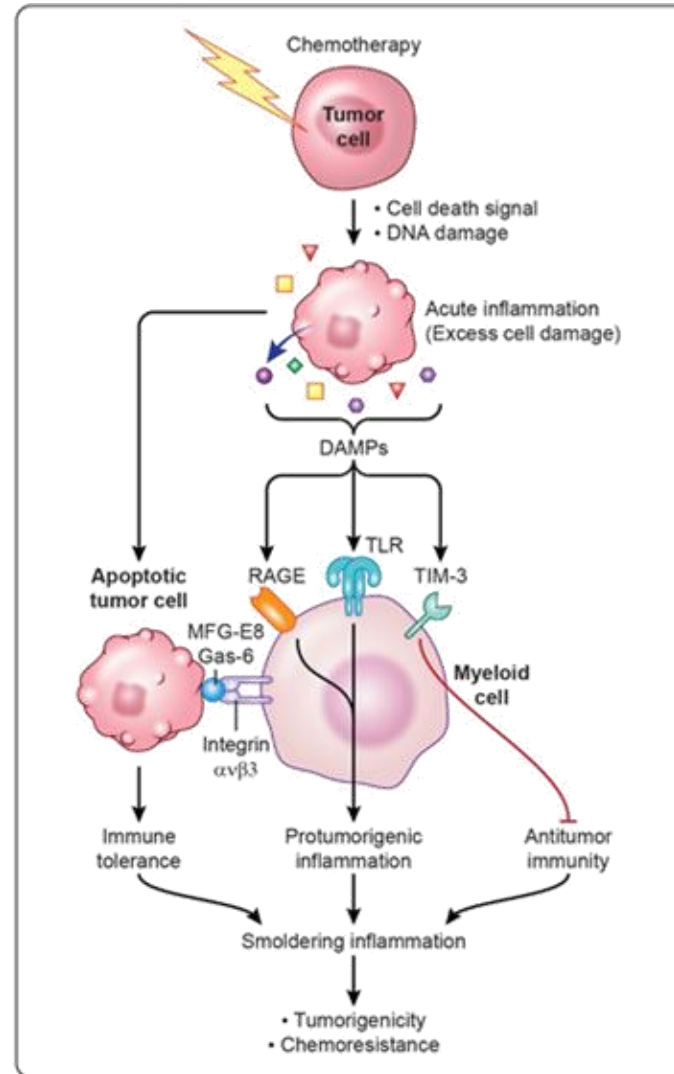
To exist, tumors must evolve mechanisms to locally disable and/or evade the immune system.

The goal of effector antibodies is to utilize the exquisite sensitivity of antibodies to specifically target and kill tumor cells using mechanisms which are difficult to evade or suppress.



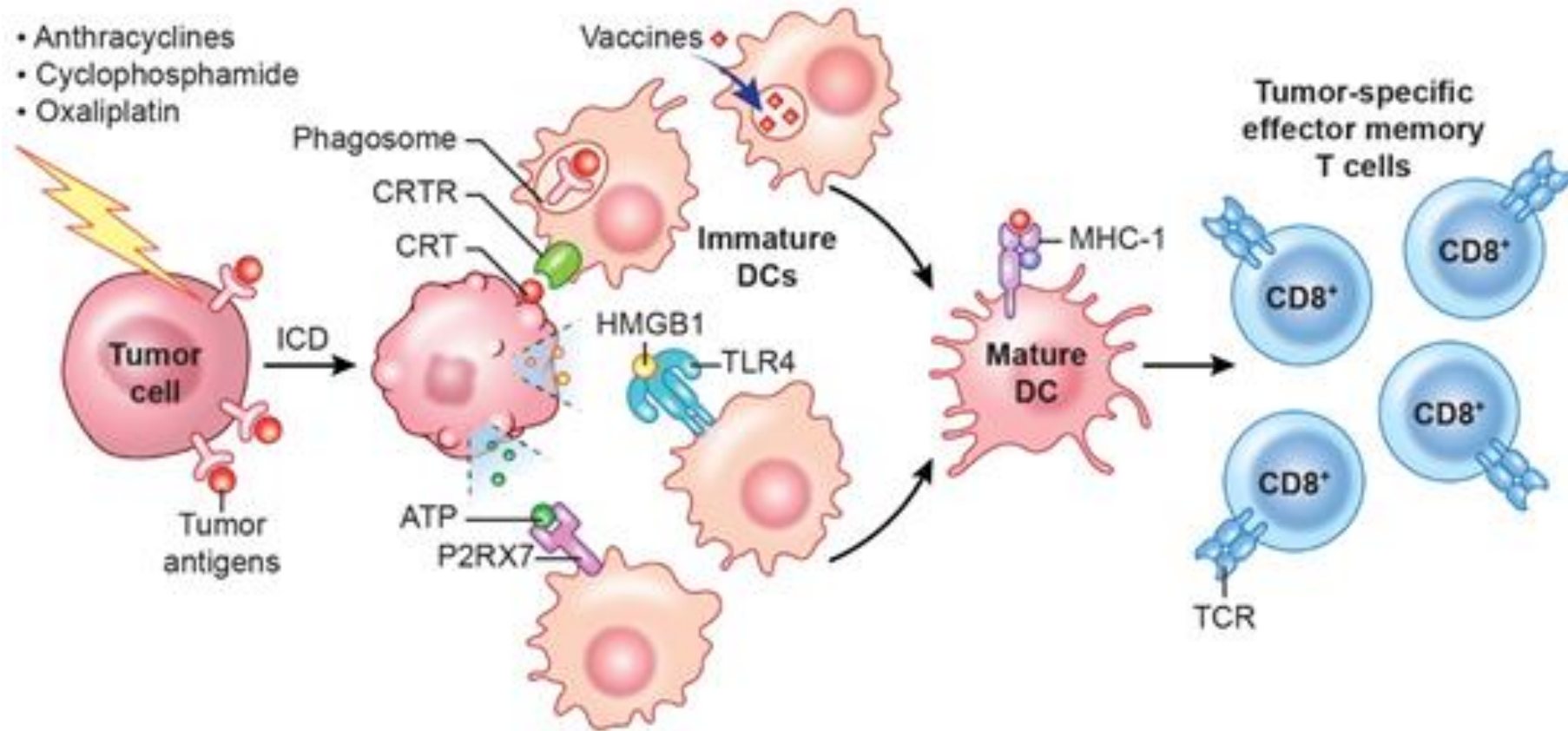
A different perspective on chemotherapy

Immunogenic versus non-immunogenic cell death



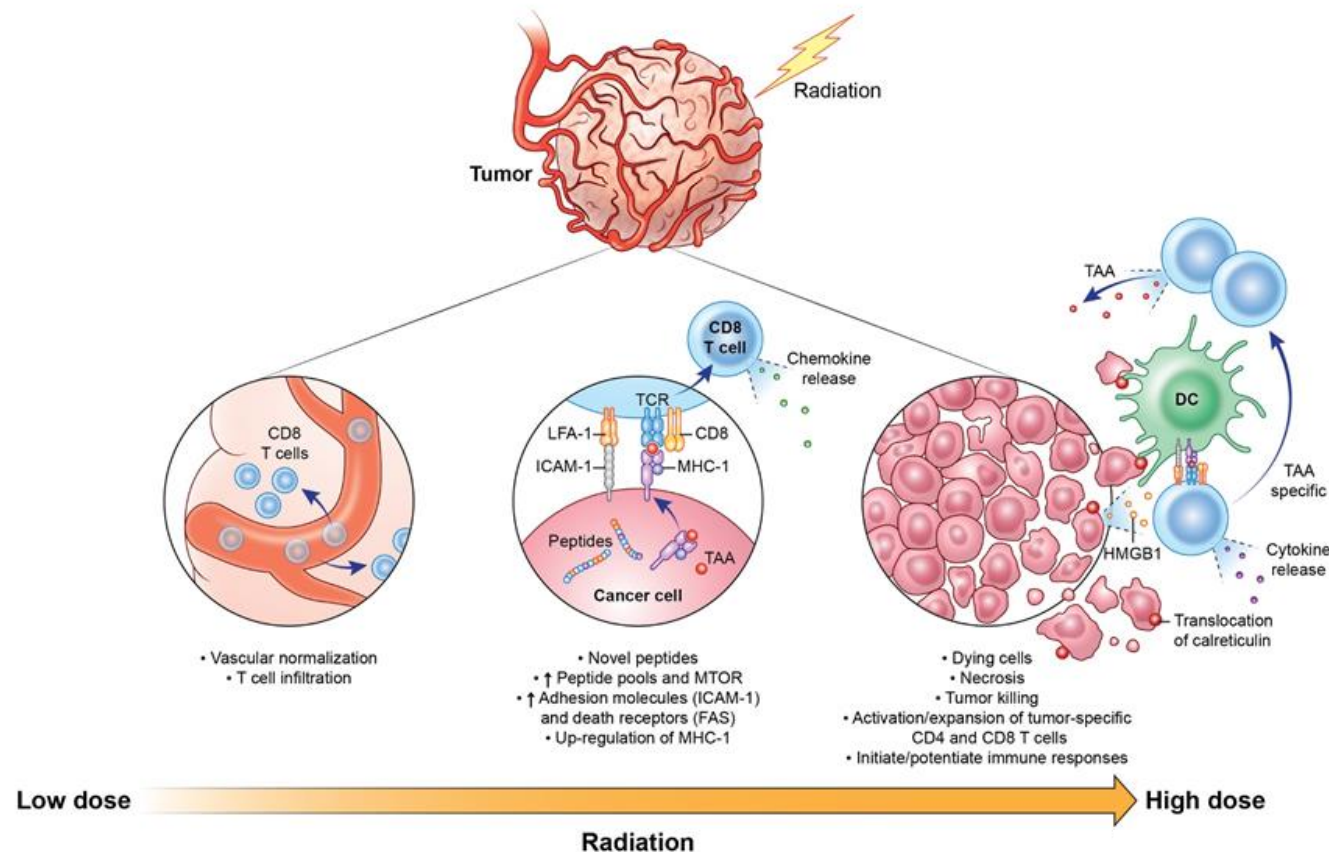
A different perspective on chemotherapy

Immunogenic versus non-immunogenic cell death



Radiation Therapy:

A potent adjuvant for tumor immunity



Exploiting the untapped potential of immunogenic modulation by radiation in combination with immunotherapy for the treatment of cancer

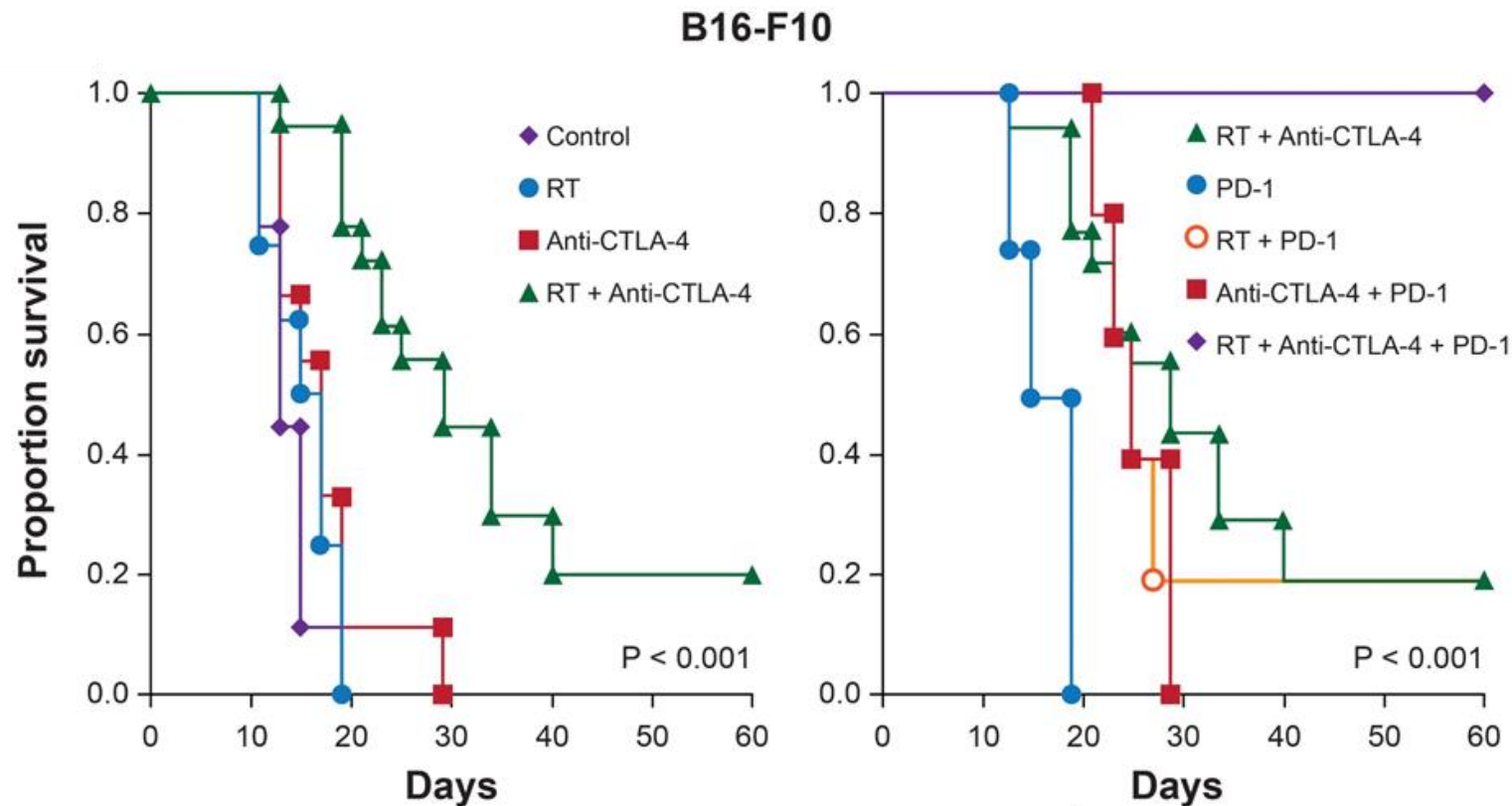
<http://www.ncbi.nlm.nih.gov/pubmed/18777956>



Abscopal effect

- Localized treatment of a tumor causes/evokes reduction of distant ones
- Immunotherapy + radiotherapy with targeted immunomodulators and immune checkpoint blockade is intended to elicit the abscopal effect.

Radiotherapy synergizes with blockade of CTLA-4 and PD-1 to cure melanoma lung metastases



Victor CT, Rech A, Maity A, Rengan R, Pauken K, Stelekati E, Benci J, Xu B, Dada H, Odorizzi P, et al. 2015. Radiation and dual checkpoint blockade activate non-redundant immune mechanisms in cancer. Nature. 520: 373-377.



Why combination immunotherapy is the future?

More consistent benefit for a larger percentage of patients
with a wide range of cancer types

